



# RESEARCH REPORT

---

*A publication providing statistical information on Howard County demographics, socioeconomic and employment trends and patterns. Available from the Department of Planning and Zoning by calling (410) 313-4370.*

---

## 2000 CENSUS

### Nativity, Foreign Born, and Ancestry Characteristics

#### **Introduction**

Research Report, Issue 7, provided a summary of the sample data release for the 2000 Census for Howard County. In that report, various datasets on education, nativity and place of birth, employment and labor force, commutation, income and poverty, and housing values and costs were summarized. *This current report discusses more detailed results on nativity, foreign born, and ancestry characteristics, including state and national comparisons as well as more detailed comparisons between different locations within Howard County. In some cases, comparisons are also made to 1990 populations.*

#### **Howard County Compared to Maryland and U.S.**

##### *Nativity and Place of Birth*

Comparing Howard County with Maryland and the U.S. as a whole, there is not much difference in the percentage of native versus foreign born residents in the year 2000. Howard County had 88.7 percent native and 11.3 percent foreign born residents according to Census data. This compares closely to the U.S. breakdown at 88.9 percent native and 11.1 percent foreign born. Maryland had a slightly greater percentage of native born at 90.2 percent. Maryland's foreign born population was 9.8 percent in 2000. This is summarized in the tables and charts below.

There is a larger difference in the percentage of residents that were born in their current State of residence. In Howard County, only 43.6 percent of residents were born in the State, compared to 49.3 percent of Maryland residents, and 60.0 percent of U.S. residents. This is reflective of Howard County's relative attraction of out of state newcomers. A similar breakdown existed in 1990 (see second table below).<sup>1</sup>

Compared to 1990, the percentage of foreign born increased at all geographic levels. Howard County's foreign born, increased the most, however, from 6.1 percent of the total population in 1990 to 11.3 percent in 2000. In Maryland, the foreign born population increased from 6.6 percent to 9.8 percent of the total population over the decade. In the U.S., the percentage

---

<sup>1</sup> For further information on domestic migration patterns, please refer to Research Report Issue 6.

increased from 7.9 percent in 1990 to 11.1 percent of the total in 2000. This reflects the large number of foreign immigrants that entered the U.S. during the 1990s.

The third chart below (on Page 4) shows the *percentage increases* from 1990 to 2000, clearly indicating the extent of the foreign born population growth over the decade. Although the absolute increase of the native born populations was greater than the increase of foreign born in all cases, the percentage growth of the foreign born population was significantly greater, particularly in Howard County. Overall, the foreign born population made up 28 percent, 40 percent and 35 percent of the total population growth over the decade for Howard County, Maryland and the U.S, respectively. Note that this is different than the *percent increase* shown in the chart on Page 4.

#### 1990 Nativity and Foreign Born Status -- United States, Maryland and Howard County

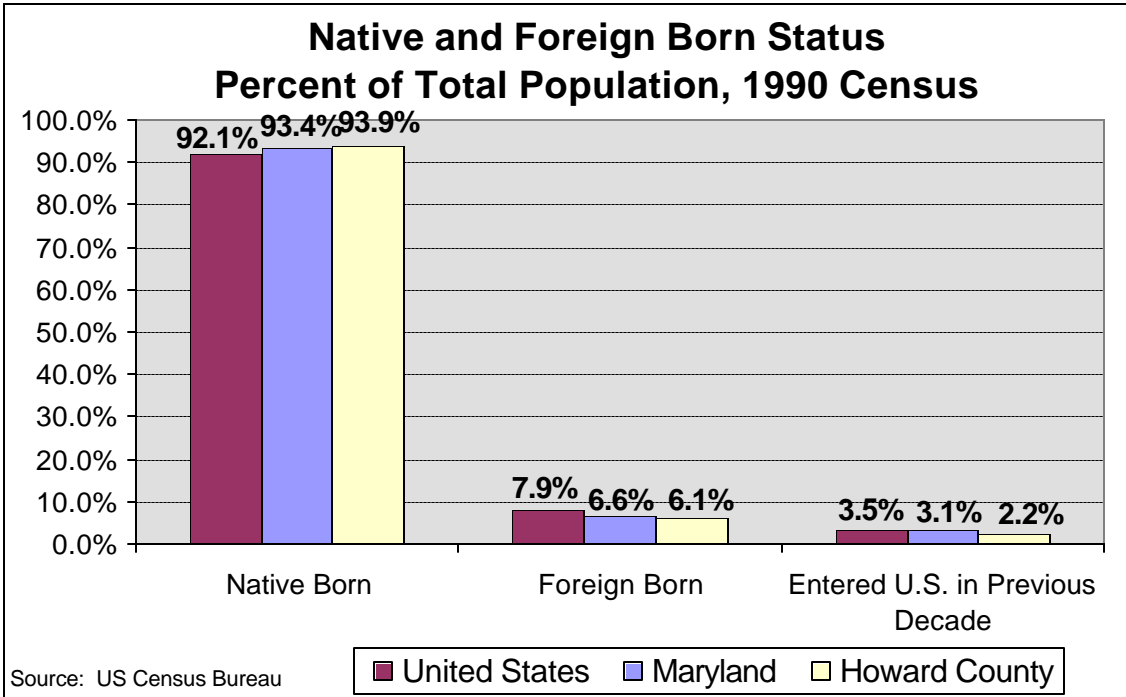
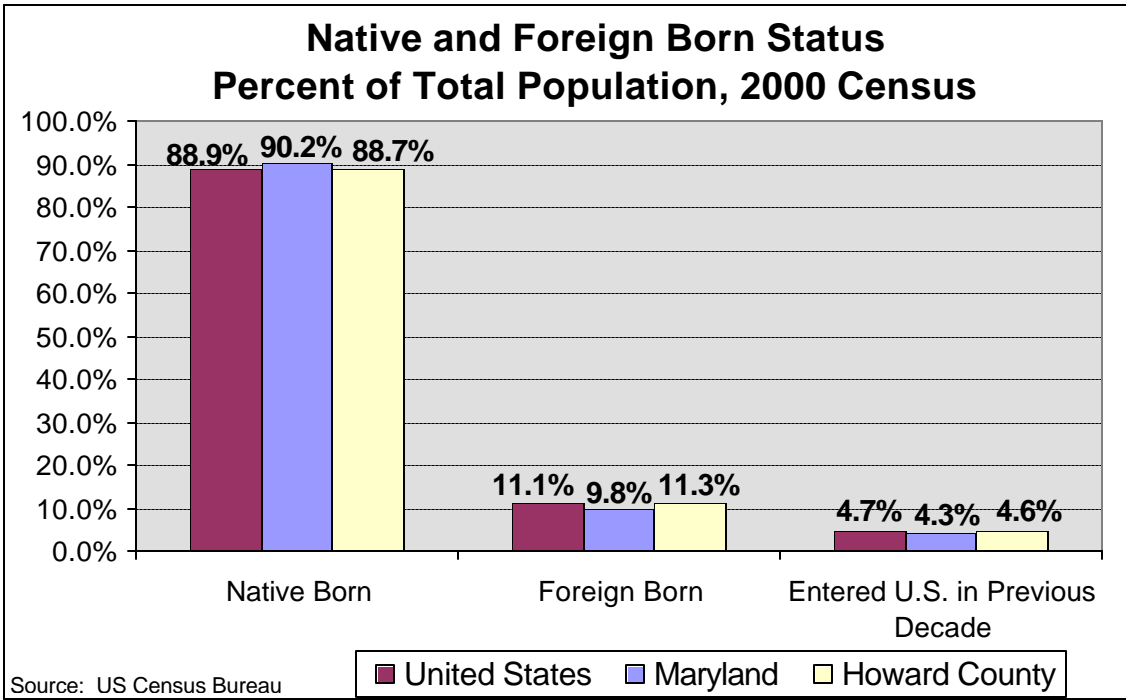
Category	United States		Maryland		Howard County	
	Number	Percent	Number	Percent	Number	Percent
<b>Native</b>	<b>228,942,557</b>	<b>92.1%</b>	<b>4,467,974</b>	<b>93.4%</b>	<b>175,961</b>	<b>93.9%</b>
Born in United States	225,695,826	90.7%	4,411,550	92.3%	172,807	92.2%
State of Residence	153,684,685	61.8%	2,383,427	49.8%	80,619	43.0%
Different State	72,011,141	29.0%	2,028,123	42.4%	92,188	49.2%
Born outside United States	3,246,731	1.3%	56,424	1.2%	3,154	1.7%
<b>Foreign Born</b>	<b>19,767,316</b>	<b>7.9%</b>	<b>313,494</b>	<b>6.6%</b>	<b>11,367</b>	<b>6.1%</b>
Entered during previous decade	8,663,627	3.5%	147,953	3.1%	4,186	2.2%
Naturalized Citizen	7,996,998	3.2%	127,005	2.7%	5,765	3.1%
Not a Citizen	11,770,318	4.7%	186,489	3.9%	5,602	3.0%
<b>Total Population</b>	<b>248,709,873</b>	<b>100%</b>	<b>4,781,468</b>	<b>100%</b>	<b>187,328</b>	<b>100.0%</b>

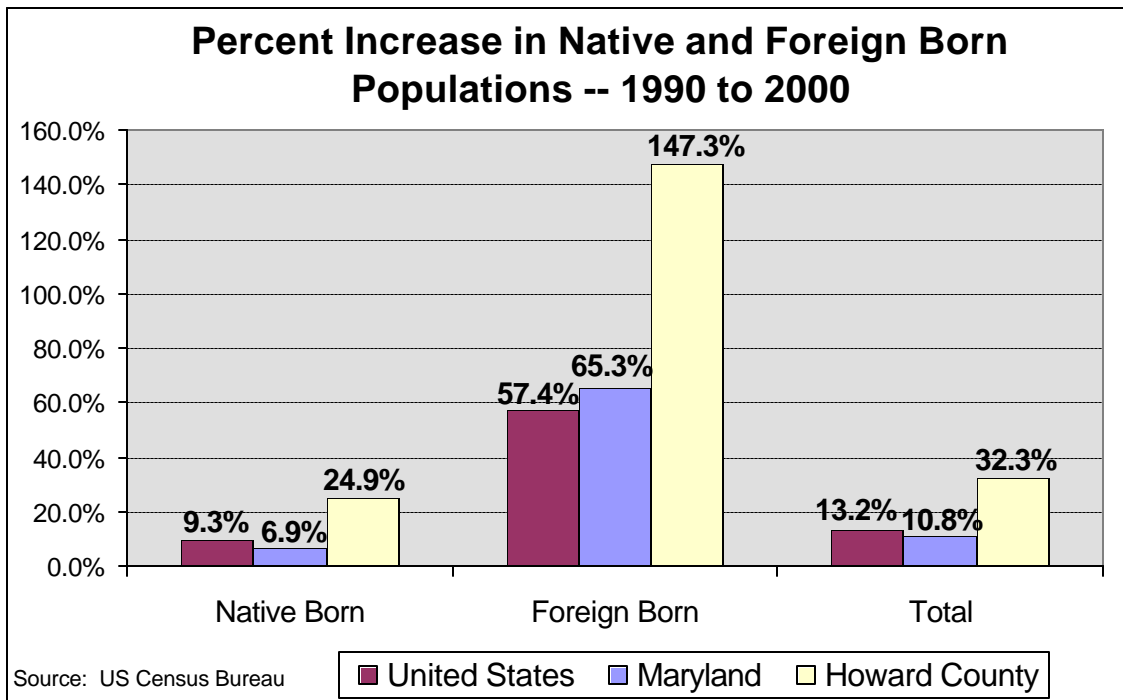
Source: U.S. Census Bureau

#### 2000 Nativity and Foreign Born Status -- United States, Maryland and Howard County

Category	United States		Maryland		Howard County	
	Number	Percent	Number	Percent	Number	Percent
<b>Native</b>	<b>250,314,017</b>	<b>88.9%</b>	<b>4,778,171</b>	<b>90.2%</b>	<b>219,729</b>	<b>88.7%</b>
Born in United States	246,786,466	87.7%	4,718,233	89.1%	215,763	87.1%
State of Residence	168,729,388	60.0%	2,610,963	49.3%	108,130	43.6%
Different State	78,057,078	27.7%	2,107,270	39.8%	107,633	43.4%
Born outside United States	3,527,551	1.3%	59,938	1.1%	3,966	1.6%
<b>Foreign Born</b>	<b>31,107,889</b>	<b>11.1%</b>	<b>518,315</b>	<b>9.8%</b>	<b>28,113</b>	<b>11.3%</b>
Entered during previous decade	13,178,276	4.7%	228,429	4.3%	11,372	4.6%
Naturalized Citizen	12,542,626	4.5%	234,711	4.4%	14,714	5.9%
Not a Citizen	18,565,263	6.6%	283,604	5.4%	13,399	5.4%
<b>Total Population</b>	<b>281,421,906</b>	<b>100.0%</b>	<b>5,296,486</b>	<b>100.0%</b>	<b>247,842</b>	<b>100.0%</b>

Source: U.S. Census Bureau





### ***Region of Birth of Foreign Born***

As opposed to the U.S. as a whole, the greatest percentage of foreign born residents in Maryland and Howard County in 2000 were from Asia. For the U.S. the clear majority are from Latin America at more than 50 percent. About 55 percent of the foreign born in Howard County are from Asia and about 19 percent are from Latin America, the next greatest percentage. In Maryland, the percentages from Asia and Latin America are close to being even at 35 percent and 34 percent, respectively. About one-quarter of the foreign born in the U.S. are from Asia.

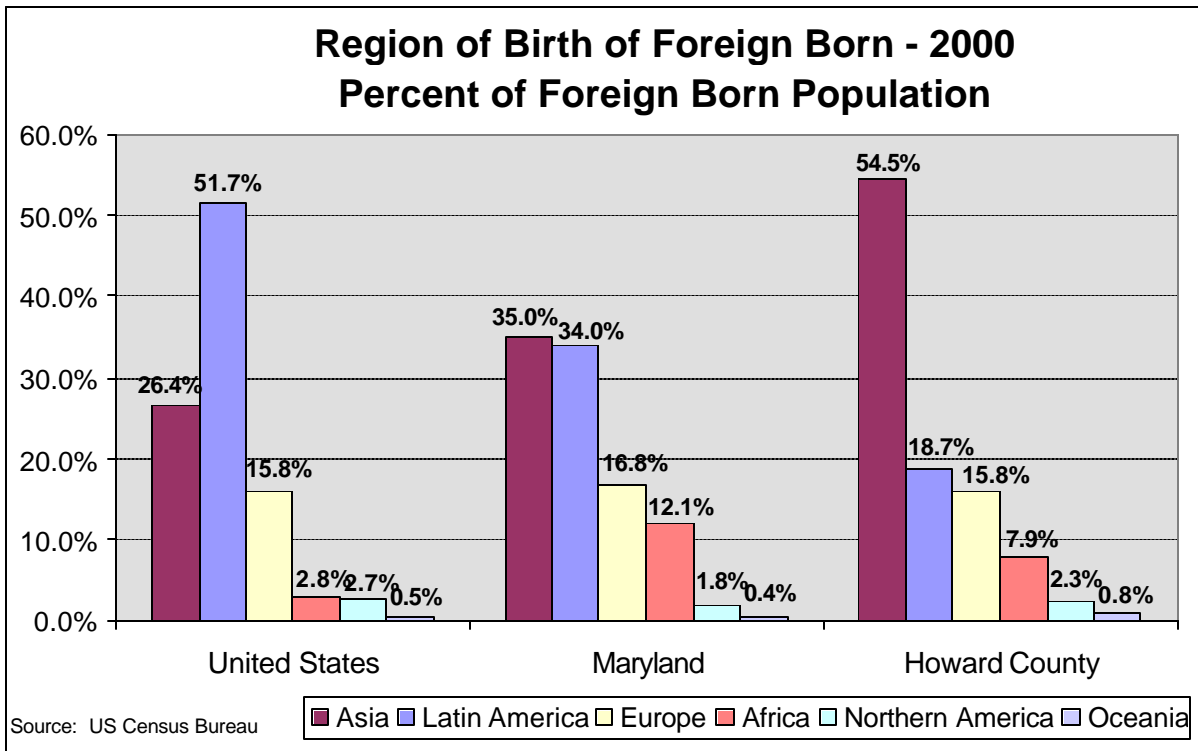
Residents from Europe represent the next greatest segment of the population for the U.S., Maryland and Howard County. This is followed by residents from Africa, Northern America and Oceania, respectively. Despite these equal rankings, Maryland and Howard County have a significantly greater percentage of African foreign born residents at 12.1 and 7.9 percent, respectively, compared to the U.S. which has only 2.7 percent. The table and chart below summarize this information.

### **Region of Birth of Foreign Born -- 2000**

Region	United States		Maryland		Howard County	
	Number (1)	Percent	Number	Percent	Number	Percent
Asia	8,226,254	26.4%	181,504	35.0%	15,310	54.5%
Latin America	16,086,974	51.7%	176,026	34.0%	5,265	18.7%
Europe	4,915,557	15.8%	86,840	16.8%	4,449	15.8%
Africa	881,300	2.8%	62,688	12.1%	2,225	7.9%
Northern America	829,442	2.7%	9,300	1.8%	633	2.3%
Oceania	168,046	0.5%	1,957	0.4%	231	0.8%
<b>Total Population</b>	<b>31,107,573</b>	<b>100.0%</b>	<b>518,315</b>	<b>100.0%</b>	<b>28,113</b>	<b>100.0%</b>

(1) An additional 316 people were born at sea.

Source: U.S. Census Bureau



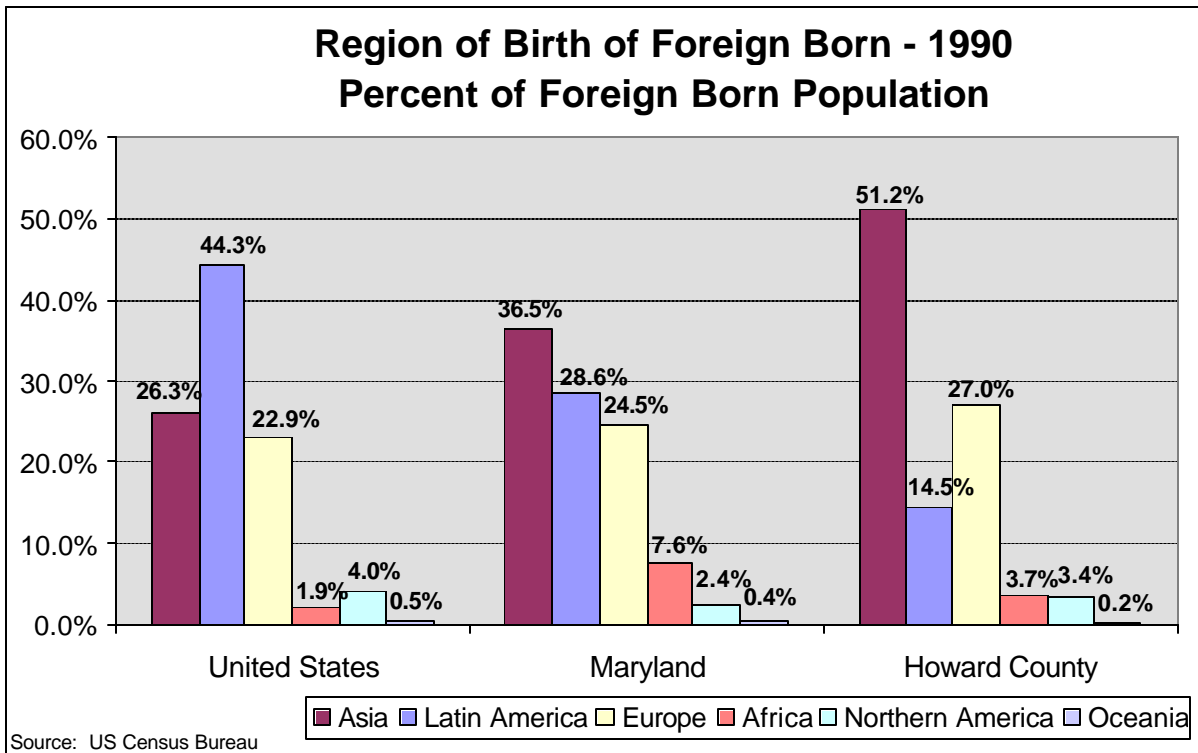
The table and chart below summarize the same results from the 1990 Census. Comparing that to the 2000 Census results, Latin Americans make up a greater percentage of the foreign born for the U.S., Maryland and Howard County. This reflects the large amount of Latin American immigration over the last decade. The percentage of Asians has increased slightly in Howard County, while it has decreased slightly in Maryland and stayed about the same in the U.S. The percentage of foreign born from Africa has increased slightly for the U.S., and to an even greater extent in Maryland and Howard County. As a result, the percentage of foreign born from Europe has decreased for all three geographies reflecting the continued shift of migration patterns away from Europe and towards these other regions.

#### Region of Birth of Foreign Born -- 1990 (1)

Region	United States		Maryland		Howard County	
	Number	Percent	Number	Percent	Number	Percent
Asia	4,979,037	26.3%	110,826	36.5%	5,738	51.2%
Latin America	8,407,837	44.3%	86,678	28.6%	1,630	14.5%
Europe	4,350,403	22.9%	74,318	24.5%	3,025	27.0%
Africa	363,819	1.9%	23,173	7.6%	415	3.7%
Northern America	753,917	4.0%	7,287	2.4%	377	3.4%
Oceania	104,145	0.5%	1,198	0.4%	22	0.2%
<b>Total Population</b>	<b>18,959,158</b>	<b>100.0%</b>	<b>303,480</b>	<b>100.0%</b>	<b>11,207</b>	<b>100.0%</b>

(1) In 1990 (in contrast to 2000), non-response on country or region of birth was not allocated.

Source: U.S. Census Bureau



### *Ancestry*

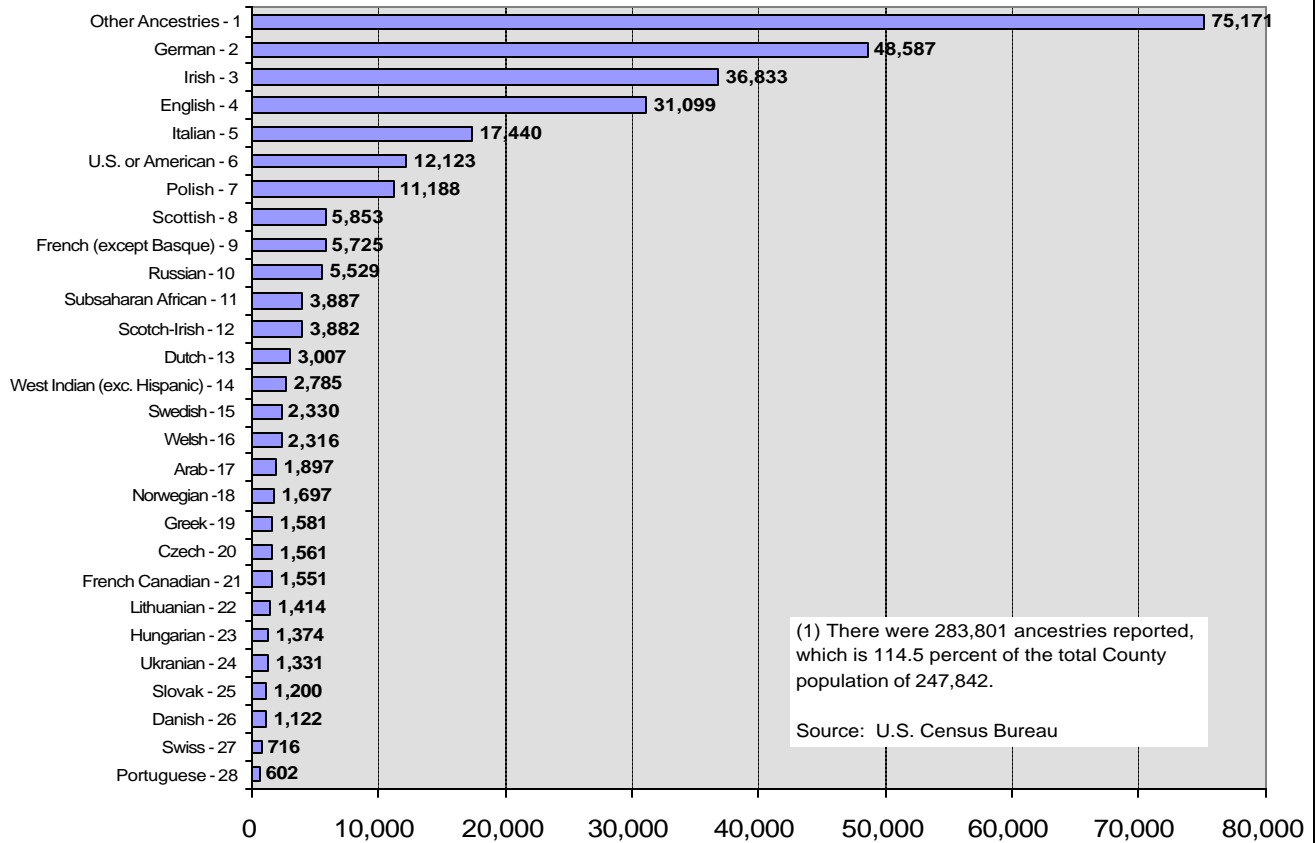
The three charts below summarize the reported ancestry of U.S., Maryland and Howard County residents, respectively. Ancestry should not be confused with a person's place of birth, although a person's place of birth and ancestry may be the same. As indicated by the Census Bureau, the ancestry data in these tabulations are limited to groups that were not shown in the Hispanic origin and race tabulations. For example, since Mexican is shown in the Hispanic Origin tables, it is not shown in the ancestry tables. Likewise, since Korean is shown in the race tables, it is also not shown in the ancestry tables. Hispanic and race groups are included in the "other groups" category of the ancestry tables.<sup>2</sup>

The ancestries are arranged in order of the most to least selected in Howard County. For Maryland and the U.S. the order by country or region is arranged the same as Howard County. Rankings are shown after the country or region name to allow for comparisons. For all three geographies, the top four ancestries are the same – Other, German, Irish, and English. Differences result thereafter. For example, Italian is the 5<sup>th</sup> most reported ancestry in Howard County and Maryland, whereas it is the sixth most reported in the U.S. as a whole.

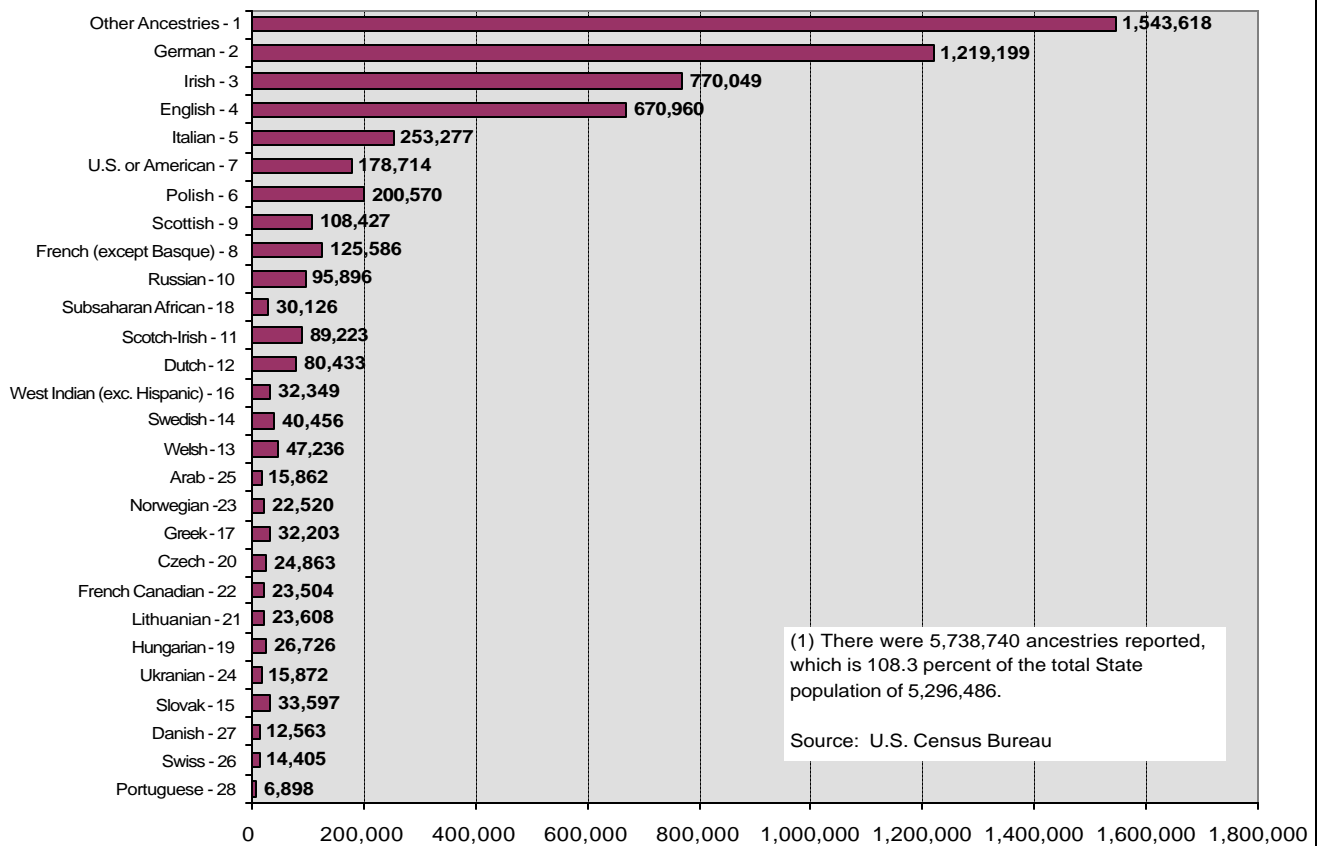
By comparing the charts, the relative propensity of particular ancestries in Howard County compared to Maryland and the U.S. can be gleaned. For example, Russians rank as the 10<sup>th</sup> most reported ancestry in Howard County and Maryland compared to 14<sup>th</sup> in the U.S. Another example are the Scandinavian rankings – Norwegian, Swedish, Dutch, and Danish – which have relatively lower rankings in Howard County compared to the U.S.

<sup>2</sup> For more information on race and Hispanic origin characteristics please refer to Research Report Issues 1 and 3.

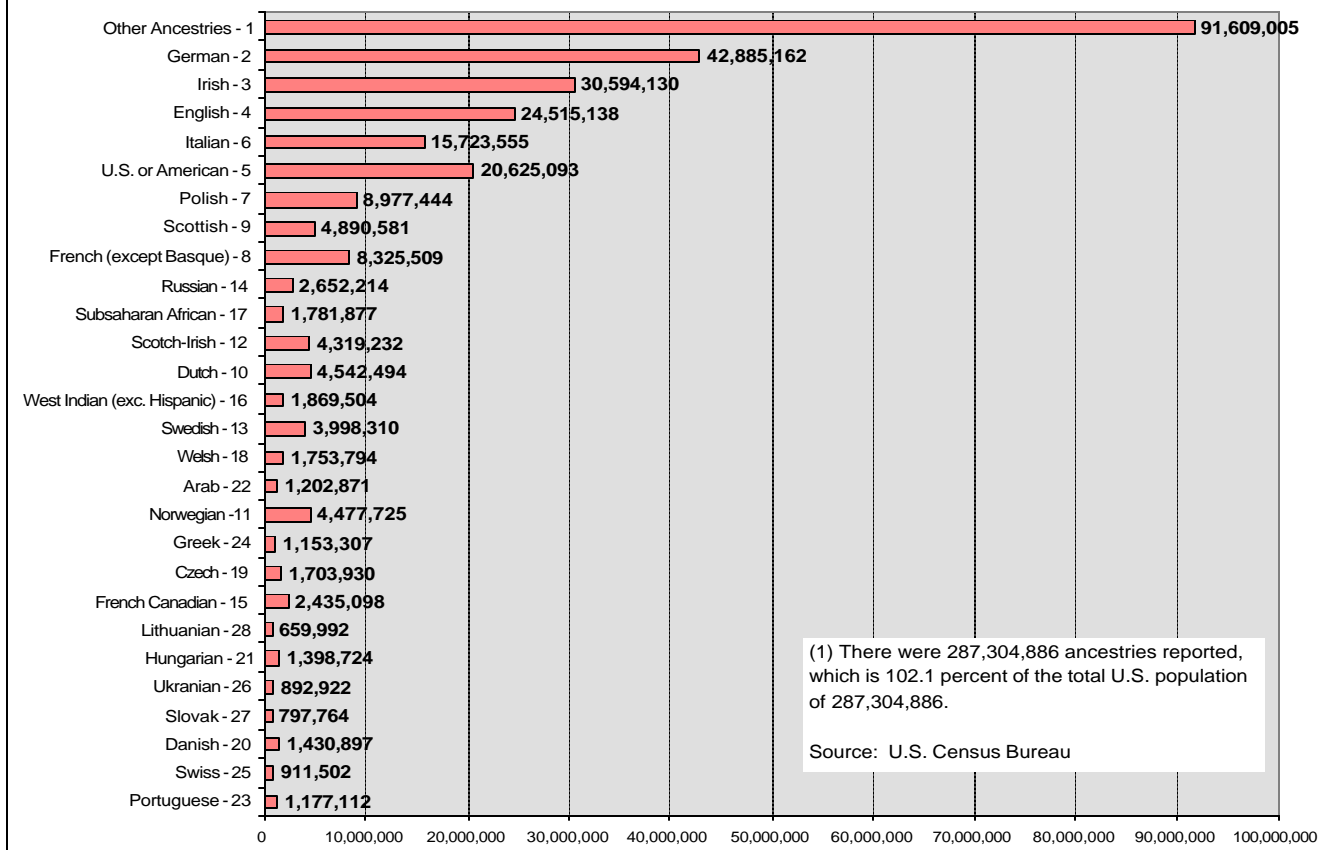
### Reported Ancestry in Howard County (Single or Multiple) (1) Year 2000



### Reported Ancestry in Maryland (Single or Multiple) (1) Year 2000



### Reported Ancestry in the U.S. (Single or Multiple) (1) Year 2000



## Intra-State and Regional Comparisons

### *Nativity and Place of Birth*

The table below summarizes the nativity and place of birth for the populations of each jurisdiction in Maryland. The chart below the table summarizes the number of foreign born for each jurisdiction. Howard County is the sixth most populous jurisdiction in the State, but has the fifth largest number of foreign born residents. Although Anne Arundel, the fifth most populous County in the State, has almost twice the population of Howard County, it has less foreign born than Howard.

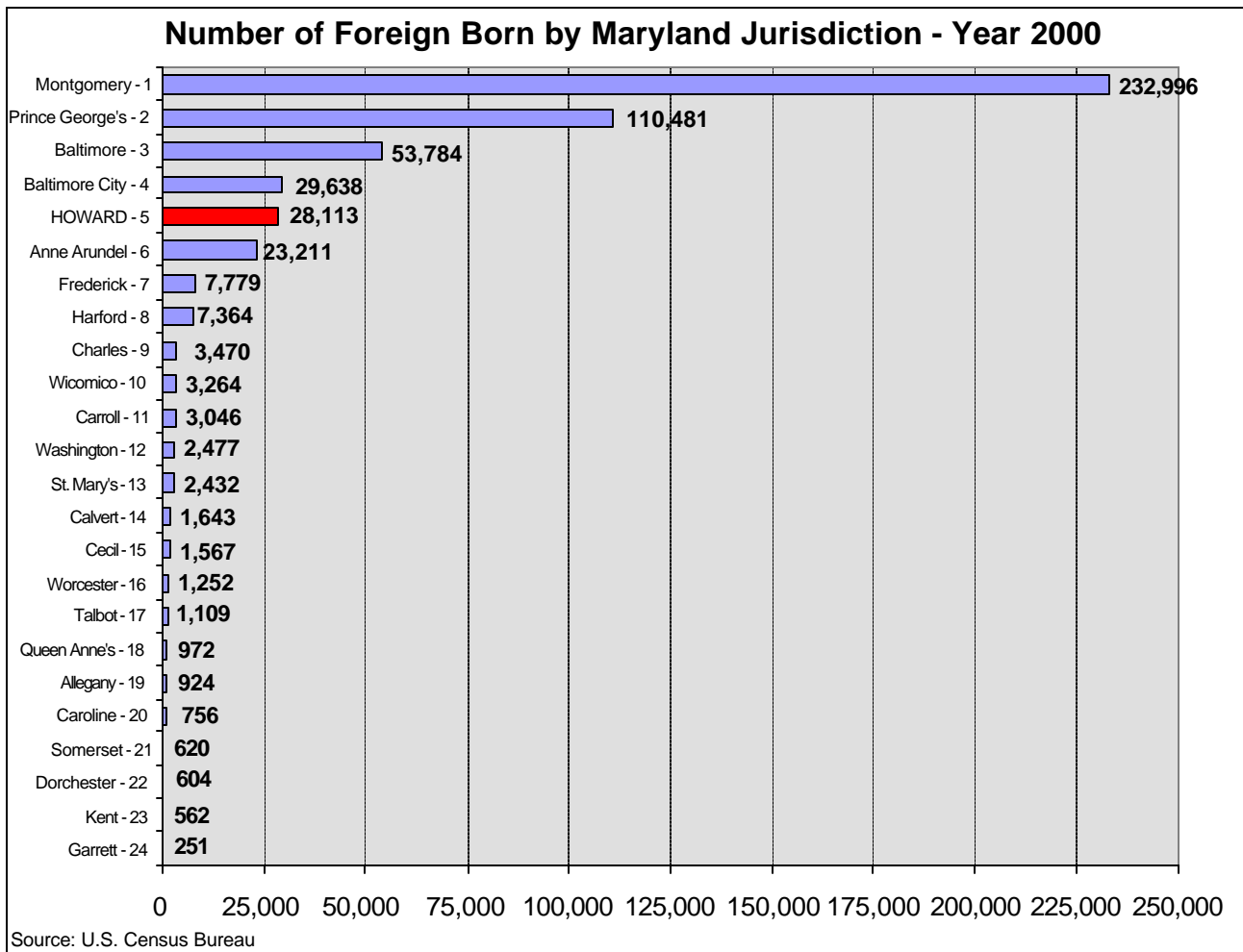
In percentage terms, 11.3 percent of Howard’s population is foreign born, the third highest in the State, following Montgomery’s 26.7 percent and Prince George’s 13.8 percent. These three counties are the only one’s that have a greater percentage of foreign born than the Statewide average of 9.8 percent. This shows the relative population diversity of these jurisdictions compared to other places in the State. The detailed foreign born numbers and percents are shown in the two charts and maps following the table. The prism maps, in particular, show the relative extent of the foreign born populations.



2000 Nativity and Place of Birth by Maryland Jurisdiction

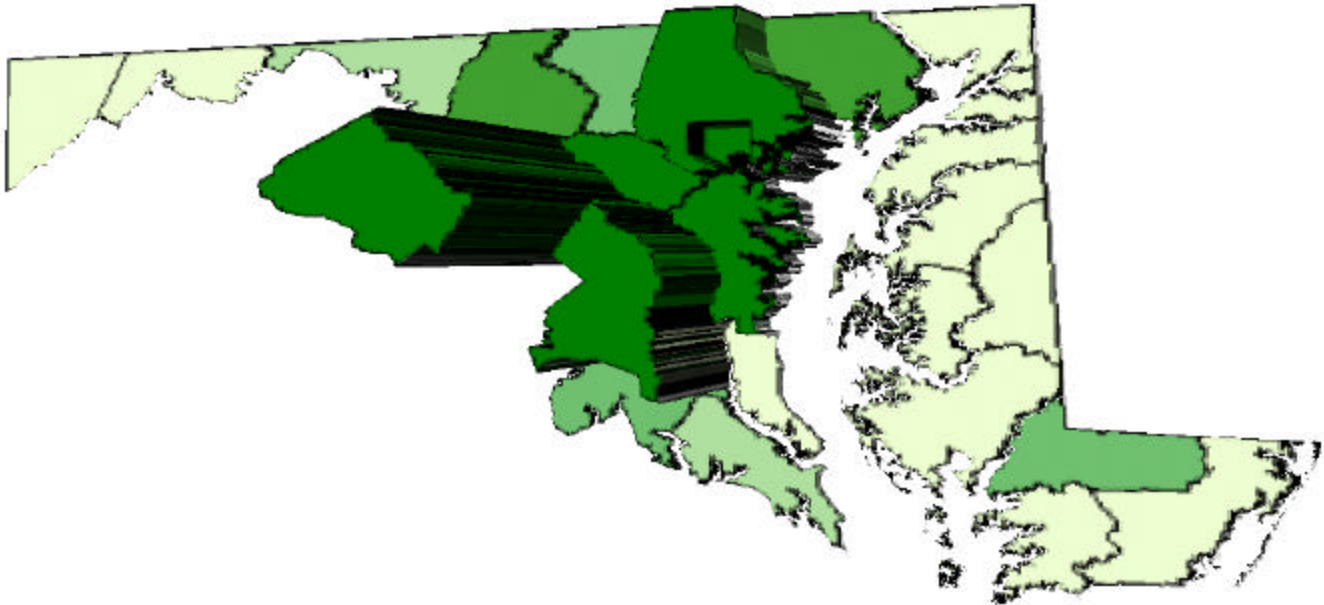
Maryland Jurisdiction (Ranked by Total Population)	Total population	Native	Born in U.S.	Born in State of residence	Born in Different state	Native -- Born outside	Foreign born	Entered 1990 to March 2000	Naturalized citizen	Not a citizen
<b>Maryland</b>	<b>5,296,486</b>	<b>4,778,171</b>	<b>4,718,233</b>	<b>2,610,963</b>	<b>2,107,270</b>	<b>59,938</b>	<b>518,315</b>	<b>228,429</b>	<b>234,711</b>	<b>283,604</b>
Montgomery - 1	873,341	640,345	627,802	196,068	431,734	12,543	232,996	103,686	100,658	132,338
Prince George's - 2	801,515	691,034	681,162	185,486	495,676	9,872	110,481	52,460	42,817	67,664
Baltimore - 3	754,292	700,508	695,054	517,366	177,688	5,454	53,784	24,550	28,791	24,993
Baltimore City - 4	651,154	621,516	617,196	463,333	153,863	4,320	29,638	14,057	13,521	16,117
Anne Arundel - 5	489,656	466,445	457,345	258,379	198,966	9,100	23,211	7,873	12,441	10,770
<b>Howard - 6</b>	<b>247,842</b>	<b>219,729</b>	<b>215,763</b>	<b>108,130</b>	<b>107,633</b>	<b>3,966</b>	<b>28,113</b>	<b>11,372</b>	<b>14,714</b>	<b>13,399</b>
Harford - 7	218,590	211,226	208,043	141,821	66,222	3,183	7,364	2,163	4,787	2,577
Frederick - 8	195,277	187,498	185,340	103,747	81,593	2,158	7,779	3,192	3,886	3,893
Carroll - 9	150,897	147,851	146,794	105,557	41,237	1,057	3,046	928	1,826	1,220
Washington - 10	131,923	129,446	128,623	89,456	39,167	823	2,477	886	1,360	1,117
Charles - 11	120,546	117,076	115,215	49,849	65,366	1,861	3,470	1,009	2,021	1,449
St. Mary's - 12	86,211	83,779	82,272	43,035	39,237	1,507	2,432	652	1,420	1,012
Cecil - 13	85,951	84,384	83,418	39,491	43,927	966	1,567	485	849	718
Wicomico - 14	84,644	81,380	80,904	53,246	27,658	476	3,264	1,704	1,467	1,797
Allegany - 15	74,930	74,006	73,700	53,131	20,569	306	924	270	464	460
Calvert - 16	74,563	72,920	72,253	37,437	34,816	667	1,643	491	902	741
Worcester - 17	46,543	45,291	45,052	27,313	17,739	239	1,252	547	595	657
Queen Anne's - 18	40,563	39,591	39,237	25,839	13,398	354	972	332	515	457
Talbot - 19	33,812	32,703	32,457	21,090	11,367	246	1,109	398	568	541
Dorchester - 20	30,674	30,070	29,878	24,032	5,846	192	604	192	276	328
Garrett - 21	29,846	29,595	29,510	19,083	10,427	85	251	76	158	93
Caroline - 22	29,772	29,016	28,723	20,434	8,289	293	756	441	213	543
Somerset - 23	24,747	24,127	24,014	16,239	7,775	113	620	403	221	399
Kent - 24	19,197	18,635	18,478	11,401	7,077	157	562	262	241	321

Source: US Census Bureau

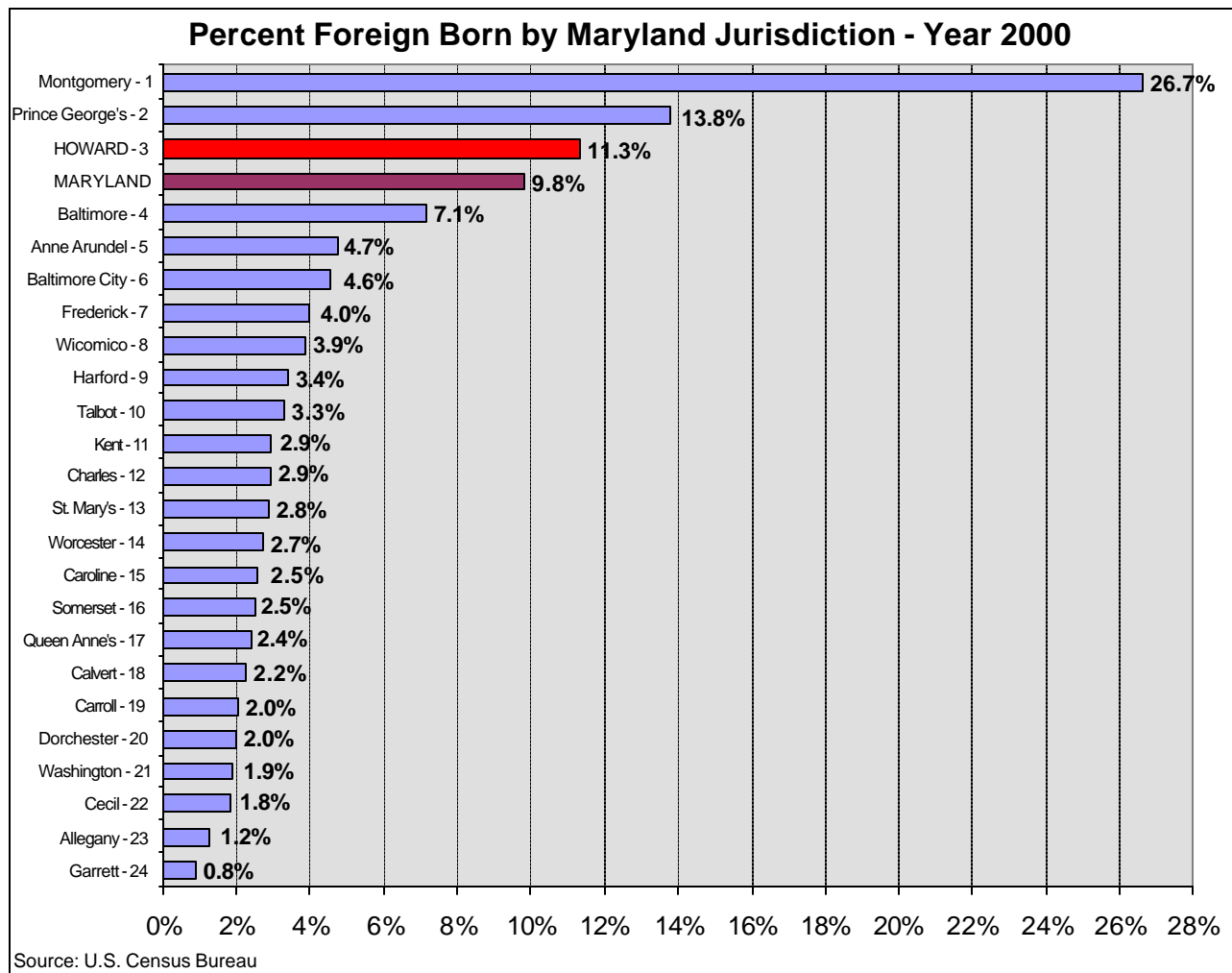


# Map 1

## Number of Foreign Born Residents by Maryland Jurisdiction – Year 2000

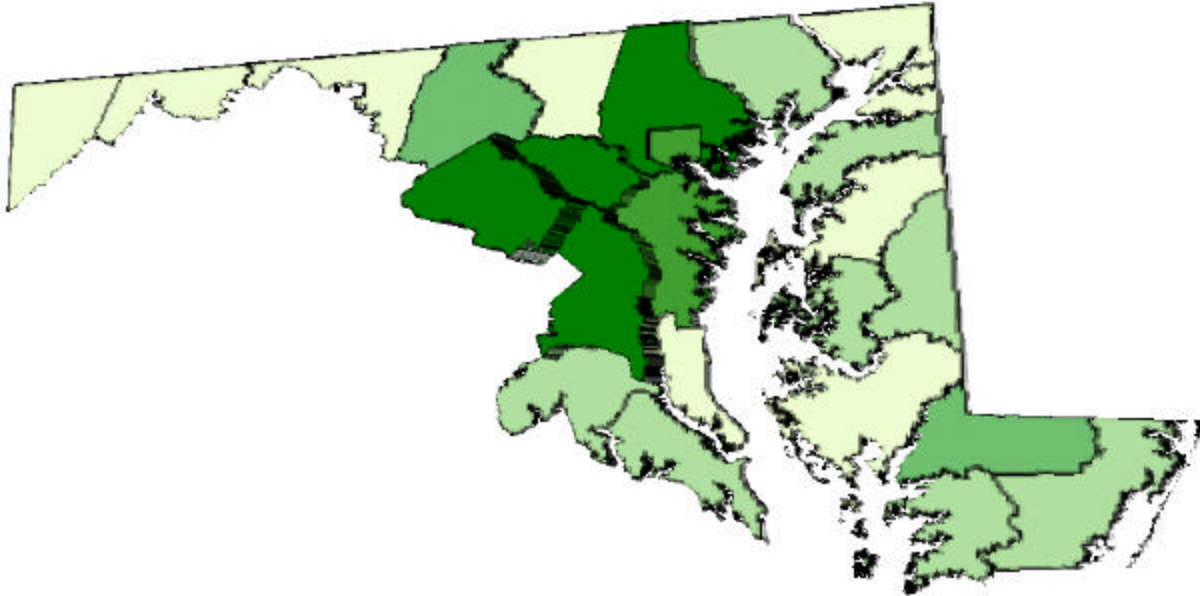


Source: US Census Bureau



---

## Map 2 Percent of Foreign Born Residents by Maryland Jurisdiction – Year 2000



Howard County  
GIS

Source: US Census Bureau

---

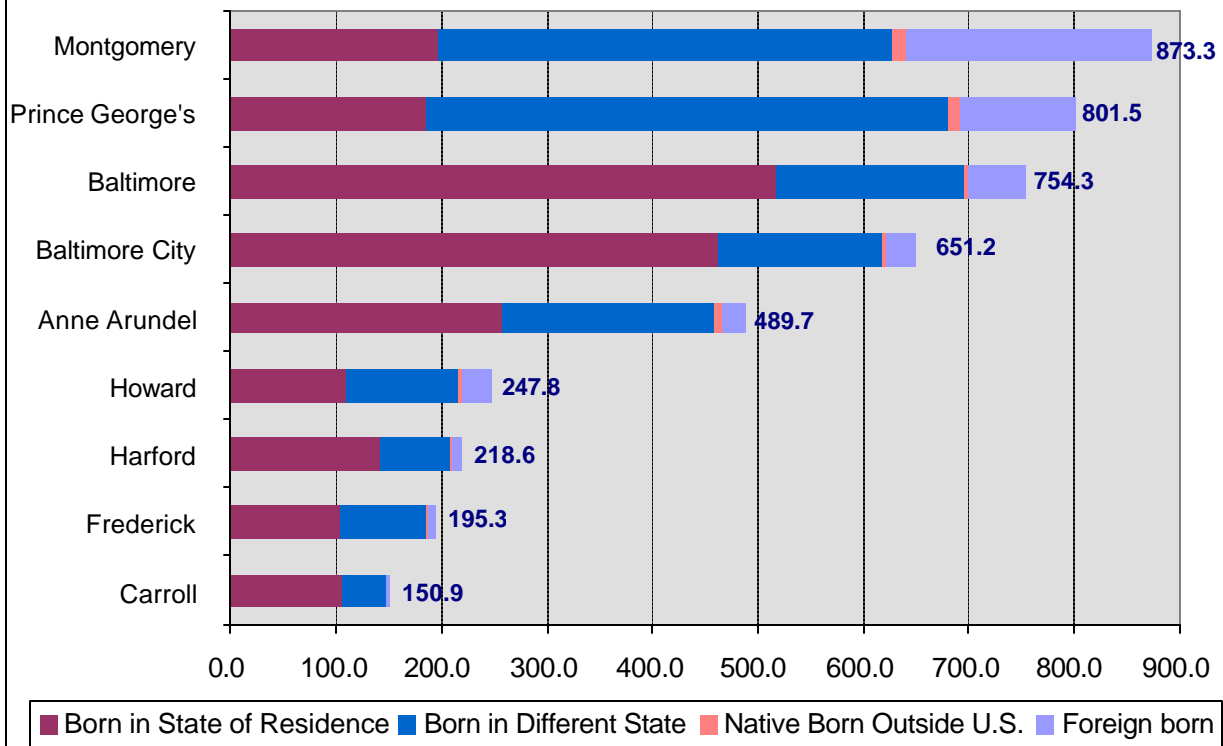
The series of charts below summarize the nativity and place of birth results for the jurisdictions within the Baltimore region. Some of the major points that can be gleaned from the data are:

- > Baltimore City, Carroll County and Baltimore County have the greatest percentage of residents who were born in Maryland at 71, 70 and 69 percent, respectively. Prince George's and Montgomery have the lowest with 23 and 22 percent, respectively. Howard is the next lowest with 44 percent of residents born in the State.
- > Prince George's County has the greatest percentage of residents born in a different State at 62 percent. It has been documented that a lot of PG County residents move from Washington DC. Montgomery County is second and Howard third with 49 and 43 percent of residents born in another State.<sup>3</sup>
- > As indicated earlier, Montgomery County by far has the greatest foreign born population. They also have the most number of foreign born who entered the County in the last decade. Prince George's County has the second greatest number of foreign born, about half that of Montgomery, but has a slightly *greater percentage* of foreign born who entered in the last decade at 47.5 percent, the greatest percentage in the region (compared to 44.5 percent for Montgomery).
- > Harford and Carroll Counties had the least percentage of foreign born who entered in the last decade at 29.4 and 30.5 percent, respectively. This compares to 40.5 percent for Howard County.

---

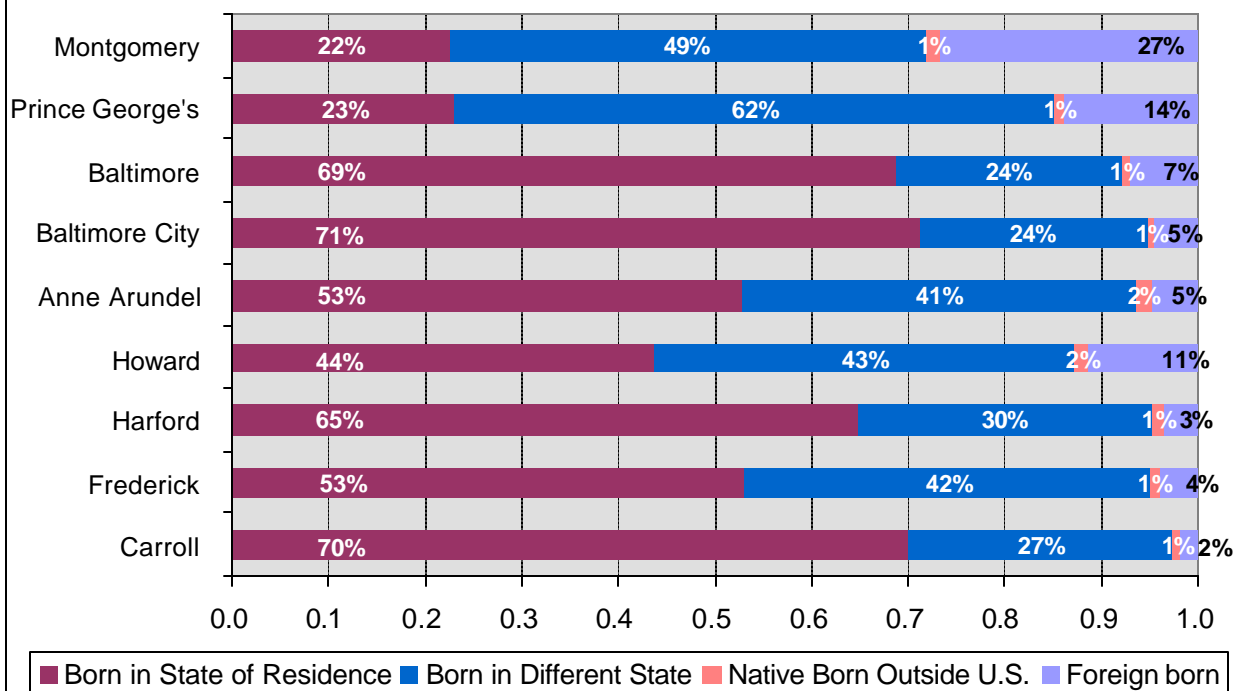
<sup>3</sup>For further information on domestic migration patterns, please refer to Research Report Issue 6.

**Population by Place of Birth in Baltimore Region - Year 2000 (x 1,000)**

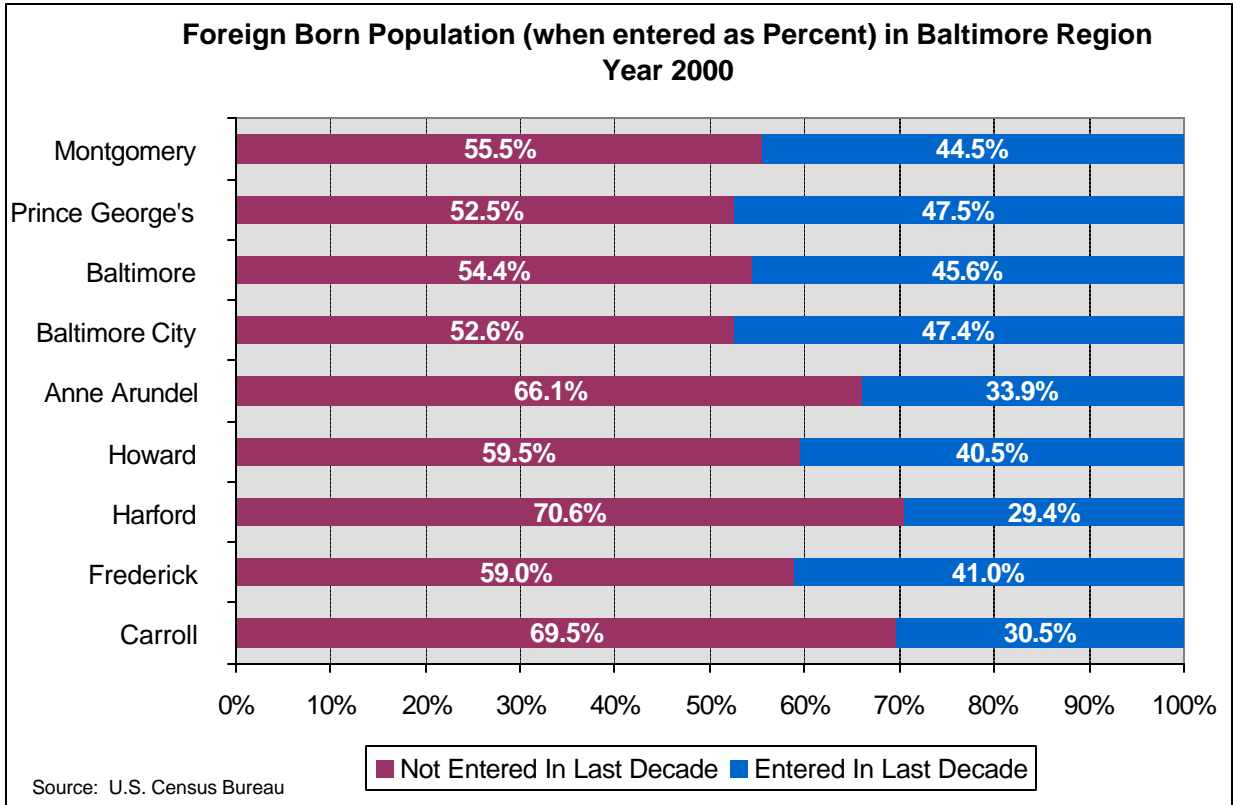
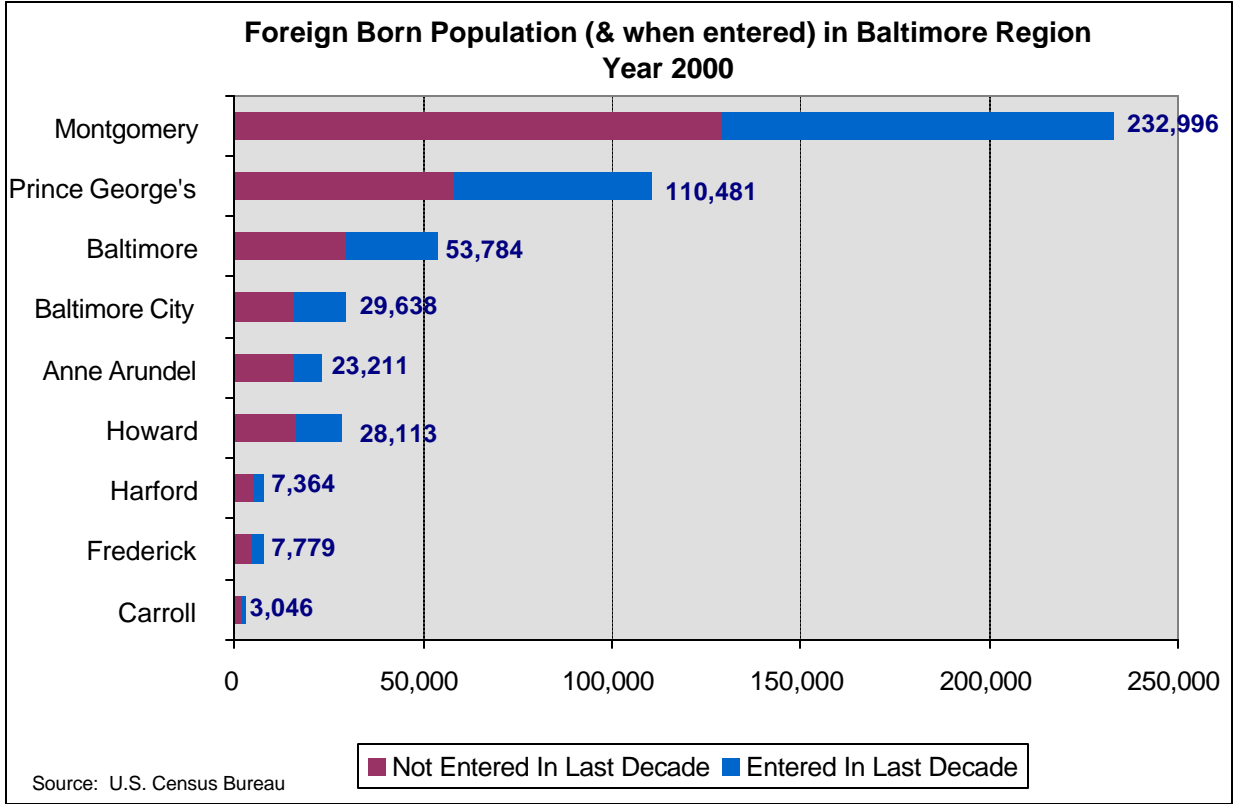


Source: U.S. Census Bureau

**Percent Population by Place of Birth in Baltimore Region - Year 2000**



Source: U.S. Census Bureau



### **Region of Birth of Foreign Born**

The table below shows the number of foreign born residents by region of birth in jurisdictions in the Baltimore region. For the entire Baltimore area, the greatest number of foreign born are from Asia (35 percent), followed by Latin America (34 percent) and Europe (16 percent). Africans make up 12 percent of the foreign born population.

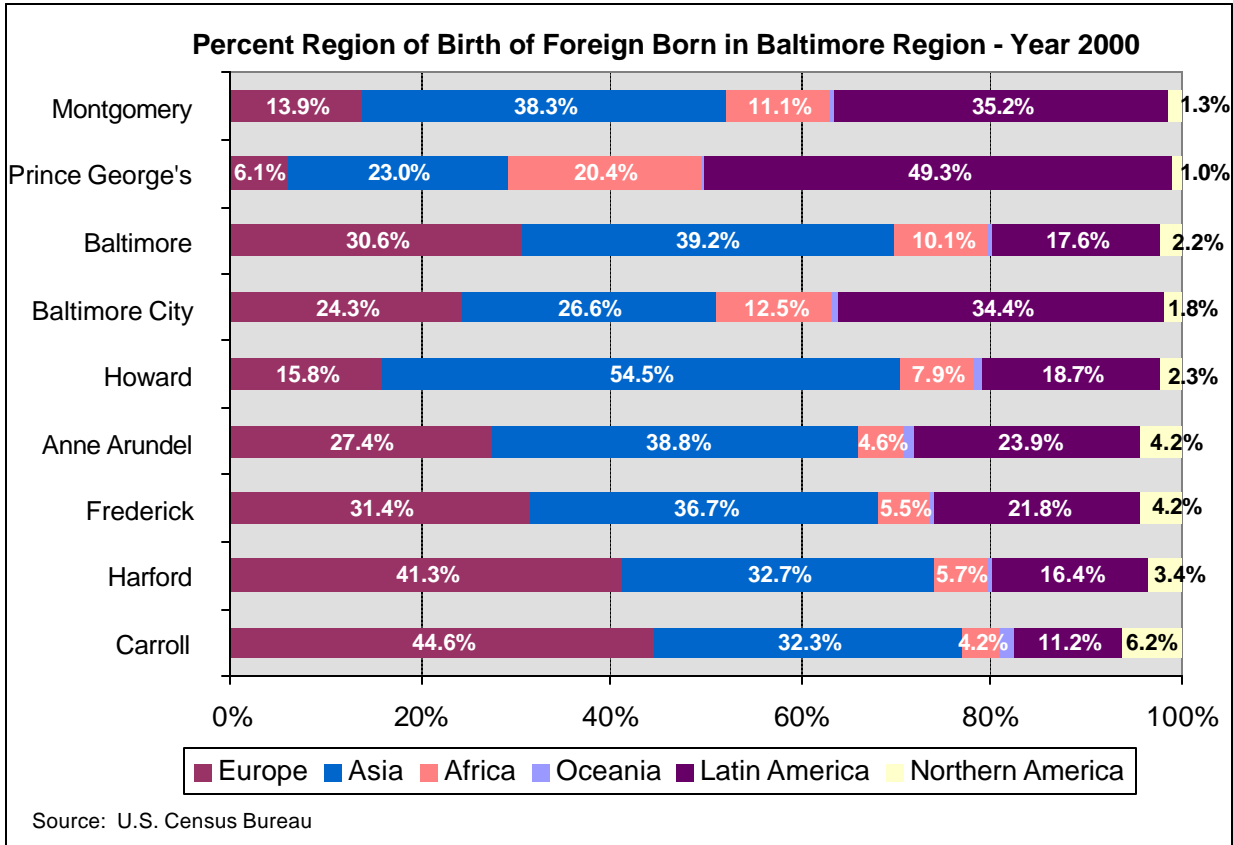
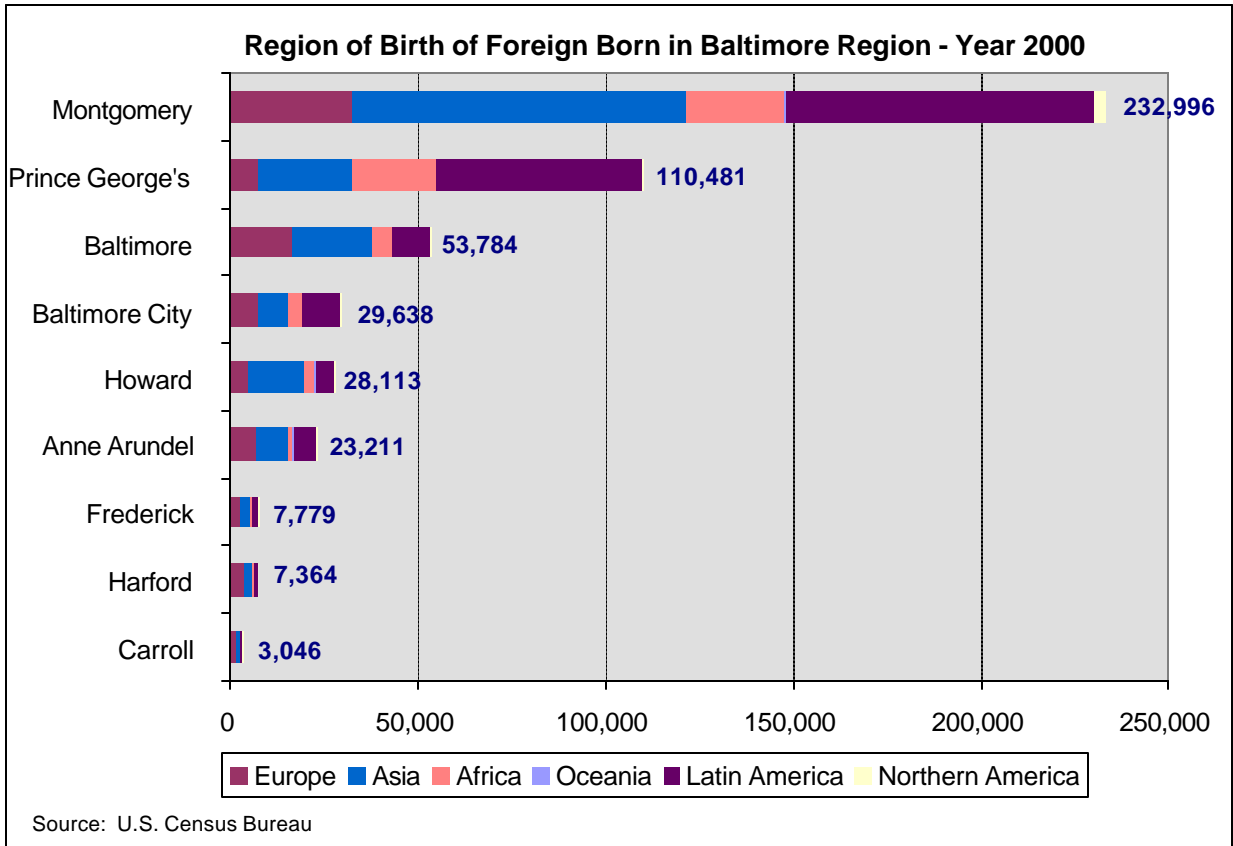
**Region of Birth of Foreign Born -- 2000**

<b>Maryland Jurisdiction</b>	<b>Europe</b>	<b>Asia</b>	<b>Africa</b>	<b>Oceania</b>	<b>Latin America</b>	<b>Northern America</b>	<b>Total</b>
Anne Arundel	6,371	8,995	1,076	245	5,559	965	<b>23,211</b>
Baltimore	16,437	21,073	5,422	183	9,474	1,195	<b>53,784</b>
Carroll	1,359	984	128	44	341	190	<b>3,046</b>
Frederick	2,444	2,856	426	33	1,692	328	<b>7,779</b>
Harford	3,043	2,411	420	29	1,208	253	<b>7,364</b>
Howard	4,449	15,310	2,225	231	5,265	633	<b>28,113</b>
Montgomery	32,352	89,128	25,776	848	81,911	2,981	<b>232,996</b>
Prince George's	6,779	25,363	22,562	143	54,522	1,112	<b>110,481</b>
Baltimore City	7,214	7,879	3,691	136	10,193	525	<b>29,638</b>
<b>Total</b>	<b>80,448</b>	<b>173,999</b>	<b>61,726</b>	<b>1,892</b>	<b>170,165</b>	<b>8,182</b>	<b>496,412</b>
<b>Percent</b>	<b>16.2%</b>	<b>35.1%</b>	<b>12.4%</b>	<b>0.4%</b>	<b>34.3%</b>	<b>1.6%</b>	<b>100.0%</b>

Source: U.S. Census

The charts below show this information graphically. The first chart below shows the total numbers and the second chart shows the percentage breakdown for each region. Some of the highlights include:

- > With more than twice the total number of foreign born residents than the next highest County (Prince George's), Montgomery County also has the greatest number of foreign born from each region.
- > Of the total foreign born in each County, Prince George's County has the greatest percentage from Latin America (49.3 percent).
- > Howard County has the greatest percentage of foreign born from Asian (54.5 percent).
- > Carroll County has the greatest percentage of foreign born from Europe (44.6 percent), although it should be noted that Carroll County has a relatively small total foreign born population of only 3,046.
- > Prince George's County has the greatest percentage of foreign born from Africa (20.4 percent).
- > Carroll County also has the greatest percentage of foreign born from Northern America (6.2 percent).



## Comparisons Within Howard County – Year 2000

### *Nativity and Place of Birth*

The tables below summarize the nativity status and place of birth for Howard County residents by regional planning district. (The maps further below outline these seven districts.) Overall, there is a greater propensity for residents living in Columbia and Ellicott City to be foreign born and residents living in ElkrIDGE, West Friendship, Cooksville, Clarksville and Laurel to be native born. This is evident by observing the percentage breakdowns, where the red percents in the two lower tables denote a higher percentage for each category than the average. For example, whereas 37.8 percent of all County residents live in Columbia, 44.6 percent of all foreign born County residents live there.

**Howard County Nativity and Place of Birth by Regional Planning District - 2000**

Category	Ellicott West							TOTAL
	ElkrIDGE	City	Friendship	Cooksville	Clarksville	Columbia	Laurel	
Native	28,945	45,785	9,949	11,195	12,920	81,215	29,720	<b>219,729</b>
Born in United States	28,449	45,071	9,871	11,070	12,763	79,453	29,086	<b>215,763</b>
State of Residence	16,746	25,115	6,159	6,803	6,288	32,283	14,736	<b>108,130</b>
Different State	11,703	19,956	3,712	4,267	6,475	47,170	14,350	<b>107,633</b>
Born outside United States	496	714	78	125	157	1,762	634	<b>3,966</b>
Foreign Born	2,897	7,193	696	478	1,179	12,547	3,123	<b>28,113</b>
Entered During Previous Decade	1,150	3,110	150	224	237	5,431	1,070	<b>11,372</b>
Naturalized Citizen	1,562	3,742	529	231	777	6,101	1,772	<b>14,714</b>
Not a Citizen	1,335	3,451	167	247	402	6,446	1,351	<b>13,399</b>
<b>Total</b>	<b>31,842</b>	<b>52,978</b>	<b>10,645</b>	<b>11,673</b>	<b>14,099</b>	<b>93,762</b>	<b>32,843</b>	<b>247,842</b>

Source: U.S. Census Bureau

**Howard County Nativity and Place of Birth by Regional Planning District - 2000  
(As Percent of Total in Category)**

Category	Ellicott West							TOTAL
	ElkrIDGE	City	Friendship	Cooksville	Clarksville	Columbia	Laurel	
Native	13.2%	20.8%	4.5%	5.1%	5.9%	37.0%	13.5%	100.0%
Born in United States	13.2%	20.9%	4.6%	5.1%	5.9%	36.8%	13.5%	100.0%
State of Residence	15.5%	23.2%	5.7%	6.3%	5.8%	29.9%	13.6%	100.0%
Different State	10.9%	18.5%	3.4%	4.0%	6.0%	43.8%	13.3%	100.0%
Born outside United States	12.5%	18.0%	2.0%	3.2%	4.0%	44.4%	16.0%	100.0%
Foreign Born	10.3%	25.6%	2.5%	1.7%	4.2%	44.6%	11.1%	100.0%
Entered During Previous Decade	10.1%	27.3%	1.3%	2.0%	2.1%	47.8%	9.4%	100.0%
Naturalized Citizen	10.6%	25.4%	3.6%	1.6%	5.3%	41.5%	12.0%	100.0%
Not a Citizen	10.0%	25.8%	1.2%	1.8%	3.0%	48.1%	10.1%	100.0%
<b>Total</b>	<b>12.8%</b>	<b>21.4%</b>	<b>4.3%</b>	<b>4.7%</b>	<b>5.7%</b>	<b>37.8%</b>	<b>13.3%</b>	<b>100.0%</b>

Source: U.S. Census Bureau

**Howard County Nativity and Place of Birth by Regional Planning District - 2000  
(As Percent of Total RPD)**

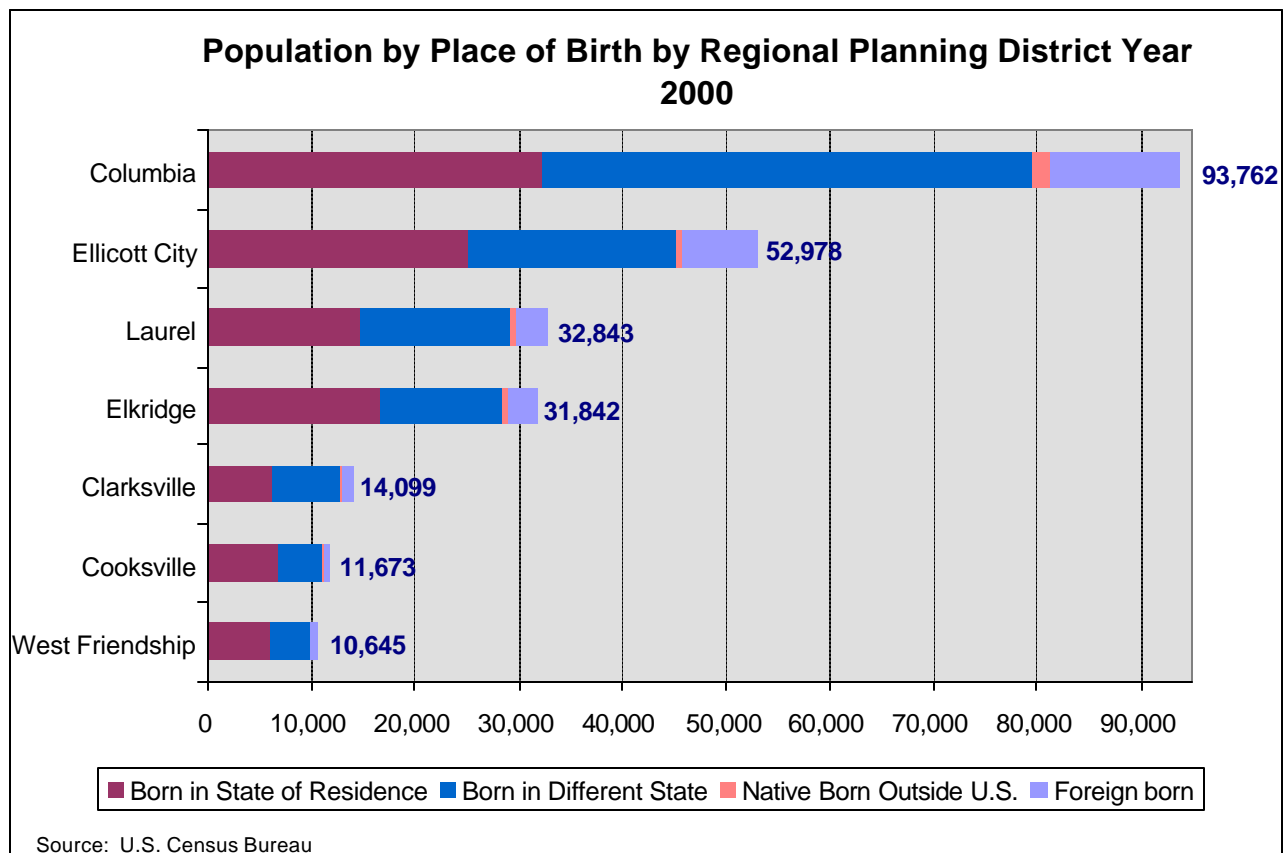
Category	Ellicott West							TOTAL
	ElkrIDGE	City	Friendship	Cooksville	Clarksville	Columbia	Laurel	
Native	90.9%	86.4%	93.5%	95.9%	91.6%	86.6%	90.5%	88.7%
Born in United States	89.3%	85.1%	92.7%	94.8%	90.5%	84.7%	88.6%	87.1%
State of Residence	52.6%	47.4%	57.9%	58.3%	44.6%	34.4%	44.9%	43.6%
Different State	36.8%	37.7%	34.9%	36.6%	45.9%	50.3%	43.7%	43.4%
Born outside United States	1.6%	1.3%	0.7%	1.1%	1.1%	1.9%	1.9%	1.6%
Foreign Born	9.1%	13.6%	6.5%	4.1%	8.4%	13.4%	9.5%	11.3%
Entered During Previous Decade	3.6%	5.9%	1.4%	1.9%	1.7%	5.8%	3.3%	4.6%
Naturalized Citizen	4.9%	7.1%	5.0%	2.0%	5.5%	6.5%	5.4%	5.9%
Not a Citizen	4.2%	6.5%	1.6%	2.1%	2.9%	6.9%	4.1%	5.4%
<b>Total</b>	<b>100%</b>	<b>100%</b>	<b>100%</b>	<b>100%</b>	<b>100%</b>	<b>100%</b>	<b>100%</b>	<b>100%</b>

Source: U.S. Census Bureau

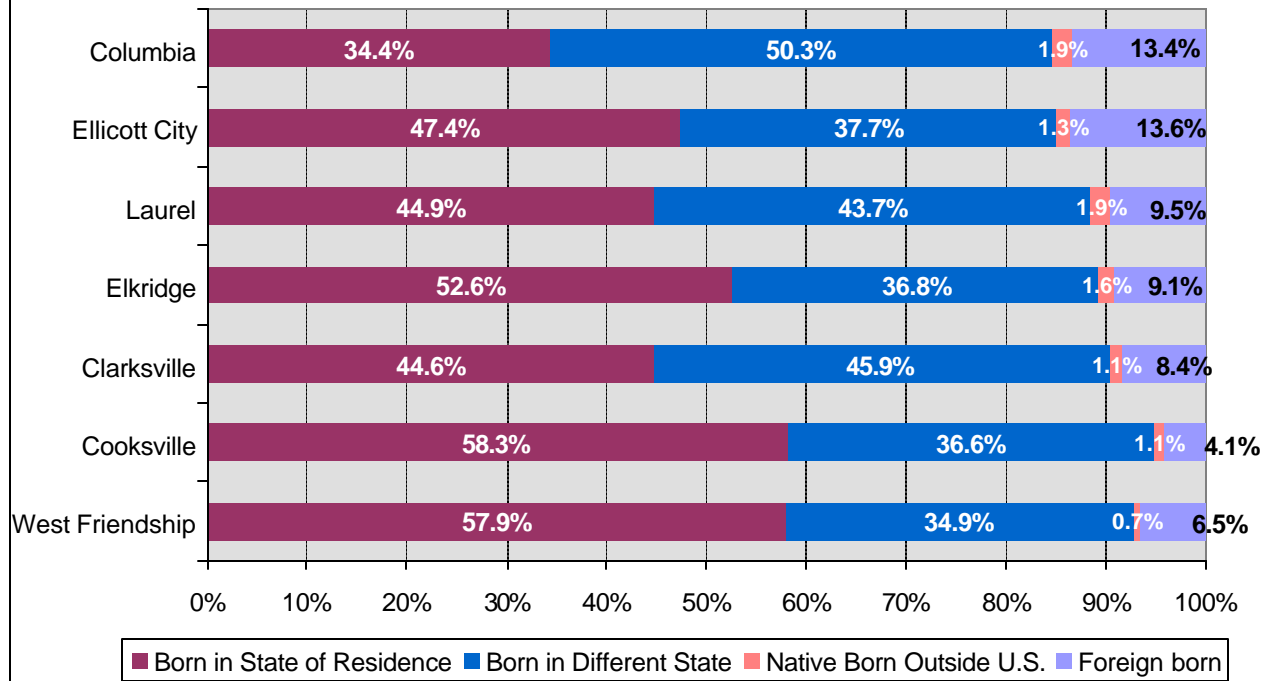


The charts and maps below summarize this information in graphical format. The maps are a step more refined showing trends at the smaller census tract level. Some of the major points include:

- > Almost 45 percent of all foreign born residents in Howard County live in Columbia and close to 26 percent live in Ellicott City, for a total of 70 percent in these two areas.
- > Ellicott City and Columbia have the greatest *concentrations* of foreign born residents, at 13.6 and 13.4 percent of their total populations, respectively.
- > The largest concentrations of foreign born, in particular, at more than 20 percent of the total area population, are located in the northeast corner of Ellicott City, in the area south of I-70 and east of US 29, as well as the southwest corner of Ellicott City, south of US 40 and west of Centennial Lane.
- > The location south of I70 and east of US 29 in Ellicott City also have the greatest percentage of foreign born residents who arrived in the U.S. in the last decade, at just over 19 percent of the total population there.
- > Cooksville and West Friendship in western Howard County have the greatest percentage of residents who are native born, at about 96 and 94 percent, respectively.
- > These two areas also have the greatest percentage of residents who were born in Maryland, at about 58 percent for each.
- > Over 50 percent of Elkridge residents were born in Maryland. The greatest concentrations of these residents are along the Route 1 Corridor.

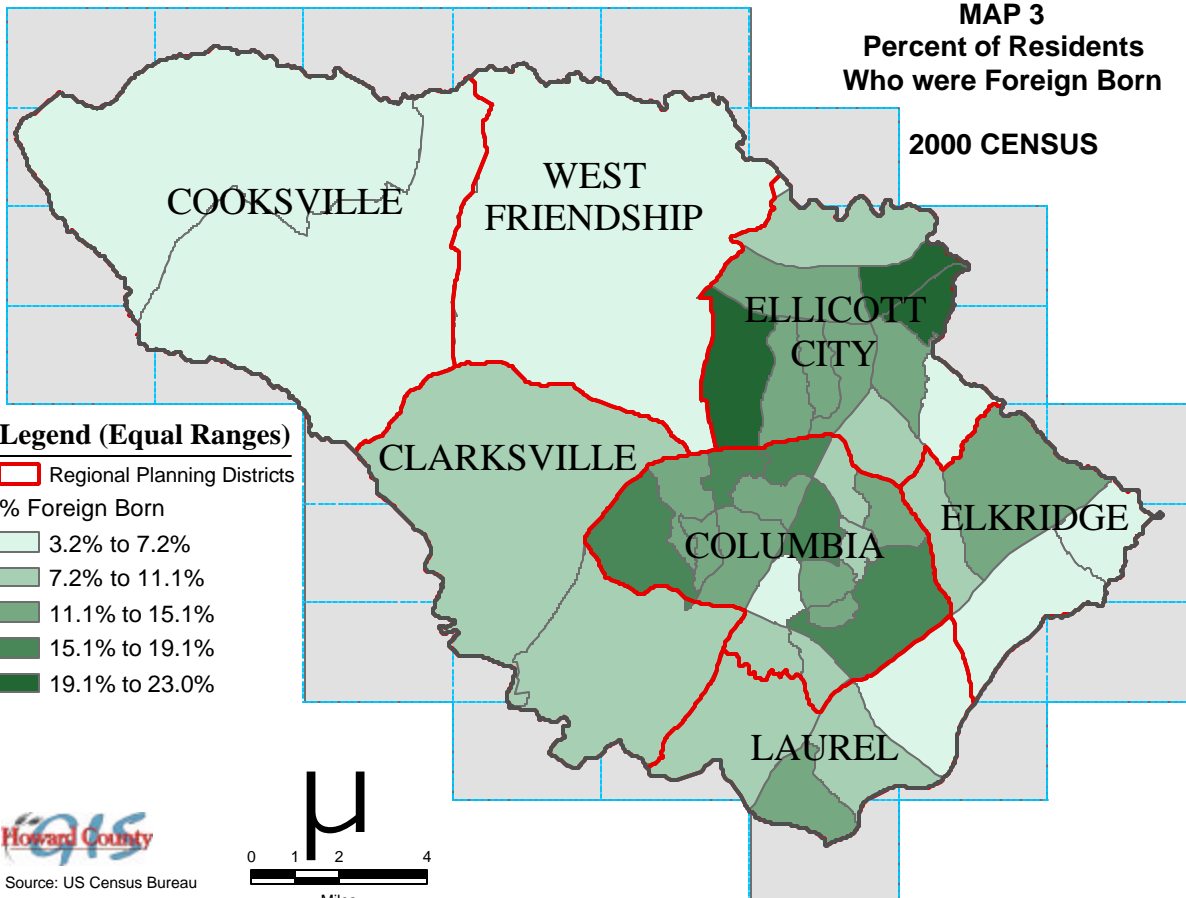


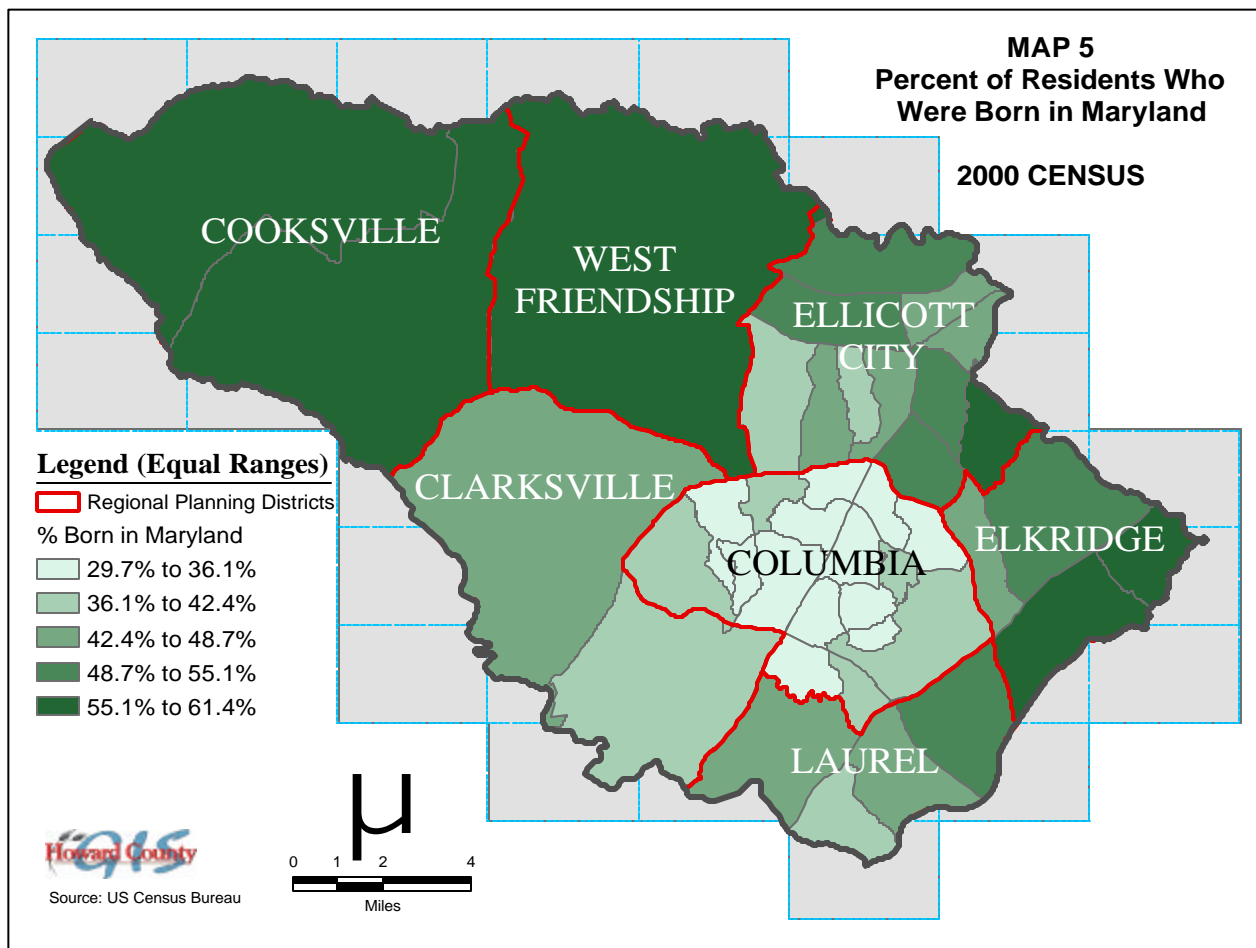
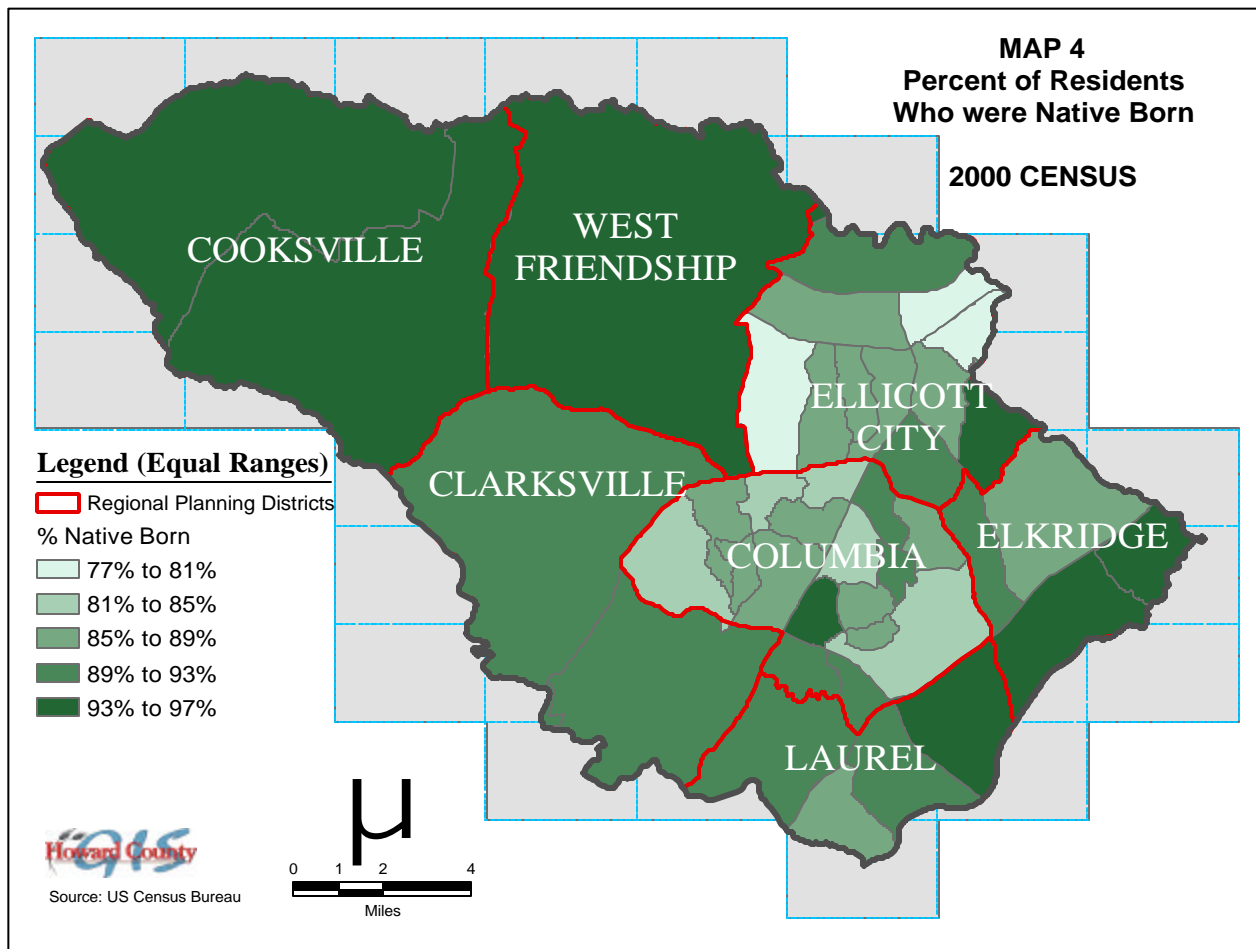
### Percent Population by Place of Birth by Regional Planning District - Year 2000

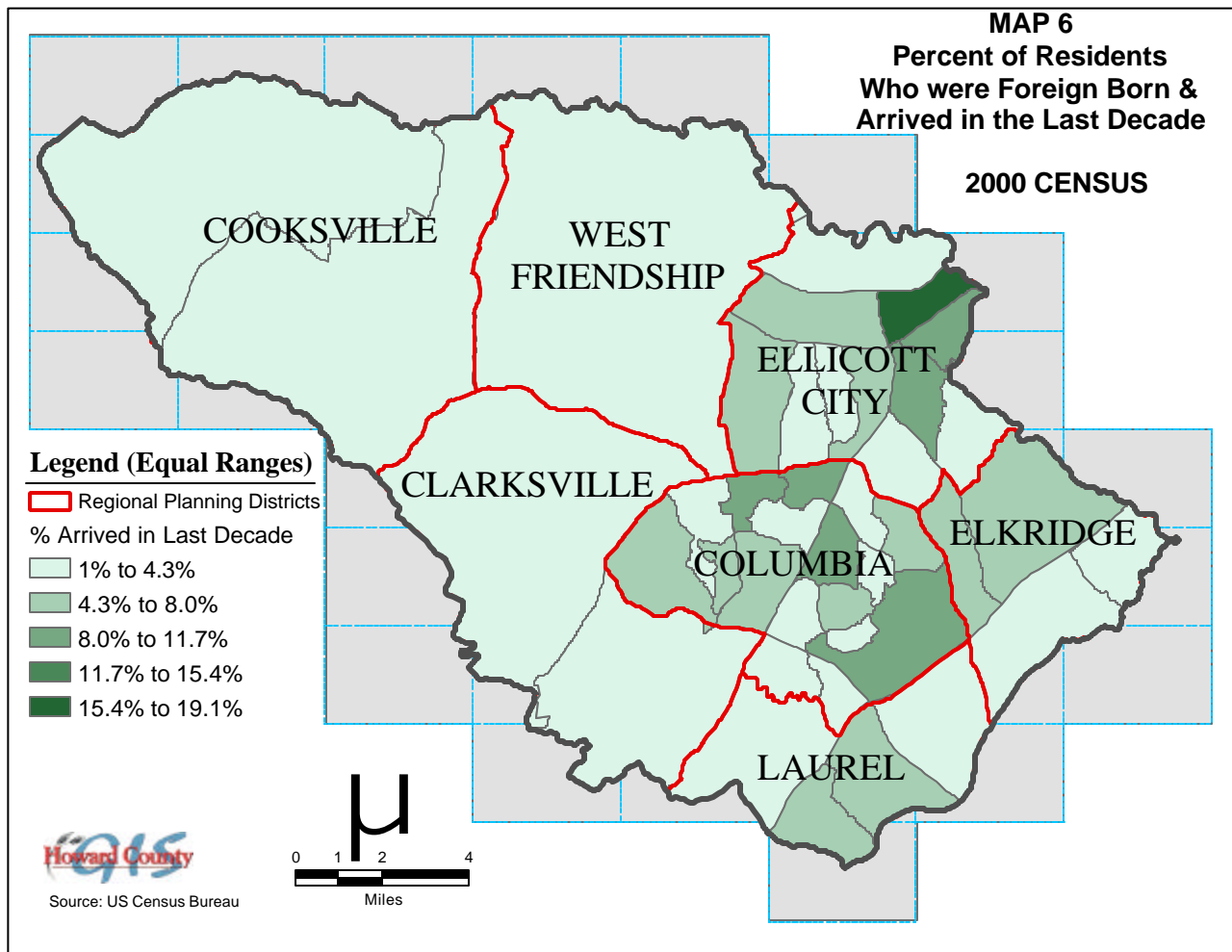


Source: U.S. Census Bureau

### MAP 3 Percent of Residents Who were Foreign Born







### ***Region of Birth of Foreign Born***

As indicated previously, over half of the Howard County's 28,113 foreign born residents in 2000 are from Asia. A little more than 38 percent of these 15,310 Asian born residents live in Columbia, followed by almost 34 percent who live in Ellicott City. Elkrigde and Laurel have the next greatest percentage at 11 percent and 10 percent, respectively. Although Ellicott City has slightly less Asian born residents than Columbia, 72 percent of the total 7,193 foreign born residents in Ellicott City are from Asia, by far the greatest single concentration of foreign born residents from a particular region. The next greatest "concentration level" are the Asian born residents living in Elkrigde's comprising 60 percent of that planning districts foreign born total.

After Asian born residents, residents born in Latin America make up the next greatest percentage of the total foreign born in Howard County at close to 19 percent with 5,265 residents. About 56 percent of this total live in Columbia, followed by 19 percent in Laurel and 10 percent in Ellicott City. The remaining 15 percent live in the other 4 Regional Planning Districts.

European born residents comprise about 16 percent of the total foreign born population, followed by 8 percent that were born in Africa. The western part of the County has the greatest concentrations of European born residents and Columbia has the greatest concentrations of African born residents. The tables, charts and maps on the following pages summarize this information.

**Region of Birth of Foreign Born -- 2000**

Region	Ellicott		West		Clarksville	Columbia	Laurel	TOTAL
	Elkridge	City	Friendship	Cooksville				
Europe	518	874	174	238	265	2,045	335	4,449
Asia	1,732	5,141	360	106	596	5,870	1,505	15,310
Africa	189	346	52	45	45	1,344	204	2,225
Oceania	5	84	9	9	36	88	0	231
Latin America	409	543	68	62	207	2,971	1,005	5,265
Northern America	44	205	33	18	30	229	74	633
<b>Total</b>	<b>2,897</b>	<b>7,193</b>	<b>696</b>	<b>478</b>	<b>1,179</b>	<b>12,547</b>	<b>3,123</b>	<b>28,113</b>

Source: U.S. Census

**Region of Birth of Foreign Born -- 2000  
(As a percent of Total in Region)**

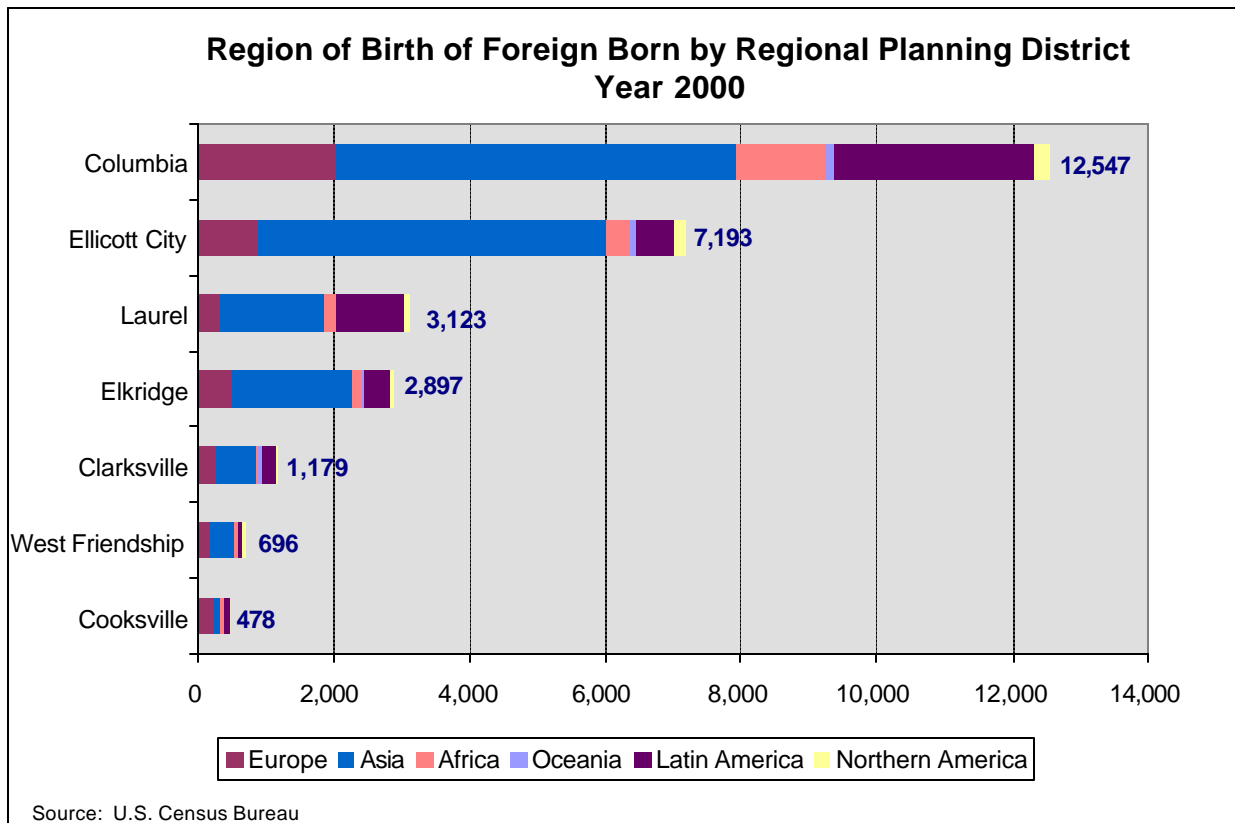
Region	Ellicott		West		Clarksville	Columbia	Laurel	TOTAL
	Elkridge	City	Friendship	Cooksville				
Europe	11.6%	19.6%	3.9%	5.3%	6.0%	46.0%	7.5%	100.0%
Asia	11.3%	33.6%	2.4%	0.7%	3.9%	38.3%	9.8%	100.0%
Africa	8.5%	15.6%	2.3%	2.0%	2.0%	60.4%	9.2%	100.0%
Oceania	2.2%	36.4%	3.9%	3.9%	15.6%	38.1%	0.0%	100.0%
Latin America	7.8%	10.3%	1.3%	1.2%	3.9%	56.4%	19.1%	100.0%
Northern America	7.0%	32.4%	5.2%	2.8%	4.7%	36.2%	11.7%	100.0%
<b>Total</b>	<b>10.3%</b>	<b>25.6%</b>	<b>2.5%</b>	<b>1.7%</b>	<b>4.2%</b>	<b>44.6%</b>	<b>11.1%</b>	<b>100.0%</b>

Source: U.S. Census

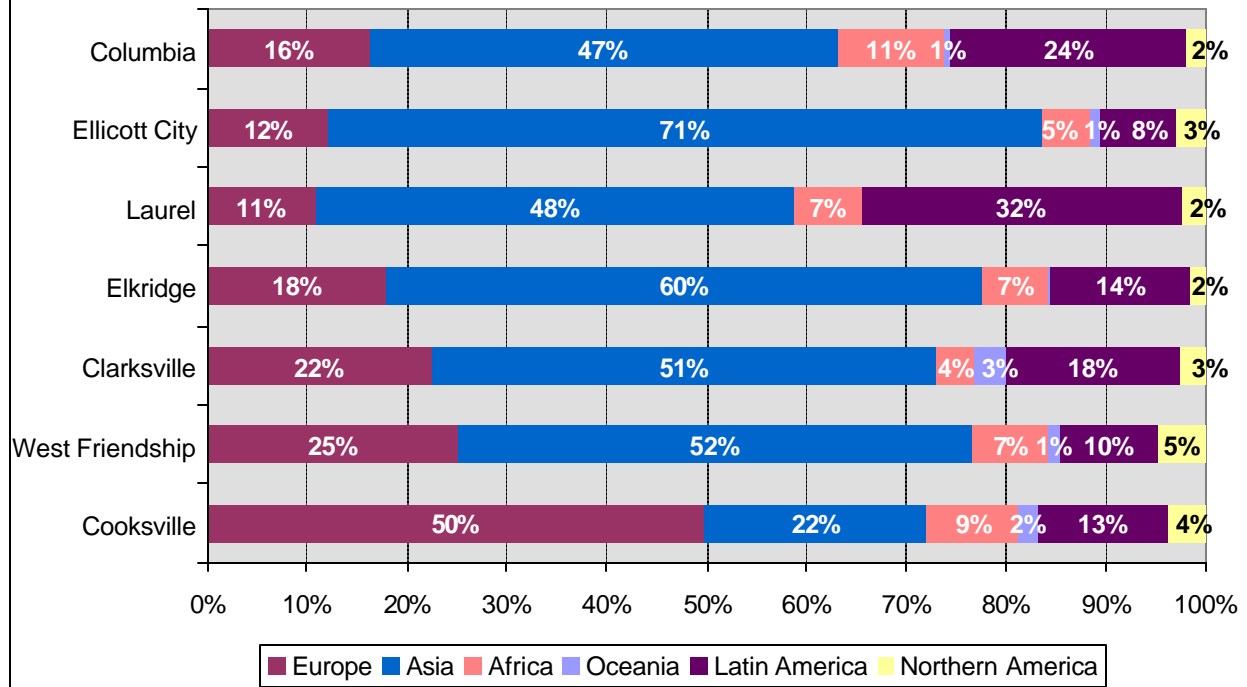
**Region of Birth of Foreign Born -- 2000  
(As a Percent of Total in RPD)**

Region	Ellicott		West		Clarksville	Columbia	Laurel	TOTAL
	Elkridge	City	Friendship	Cooksville				
Europe	17.9%	12.2%	25.0%	49.8%	22.5%	16.3%	10.7%	15.8%
Asia	59.8%	71.5%	51.7%	22.2%	50.6%	46.8%	48.2%	54.5%
Africa	6.5%	4.8%	7.5%	9.4%	3.8%	10.7%	6.5%	7.9%
Oceania	0.2%	1.2%	1.3%	1.9%	3.1%	0.7%	0.0%	0.8%
Latin America	14.1%	7.5%	9.8%	13.0%	17.6%	23.7%	32.2%	18.7%
Northern America	1.5%	2.8%	4.7%	3.8%	2.5%	1.8%	2.4%	2.3%
<b>Total</b>	<b>100.0%</b>	<b>100.0%</b>	<b>100.0%</b>	<b>100.0%</b>	<b>100.0%</b>	<b>100.0%</b>	<b>100.0%</b>	<b>100.0%</b>

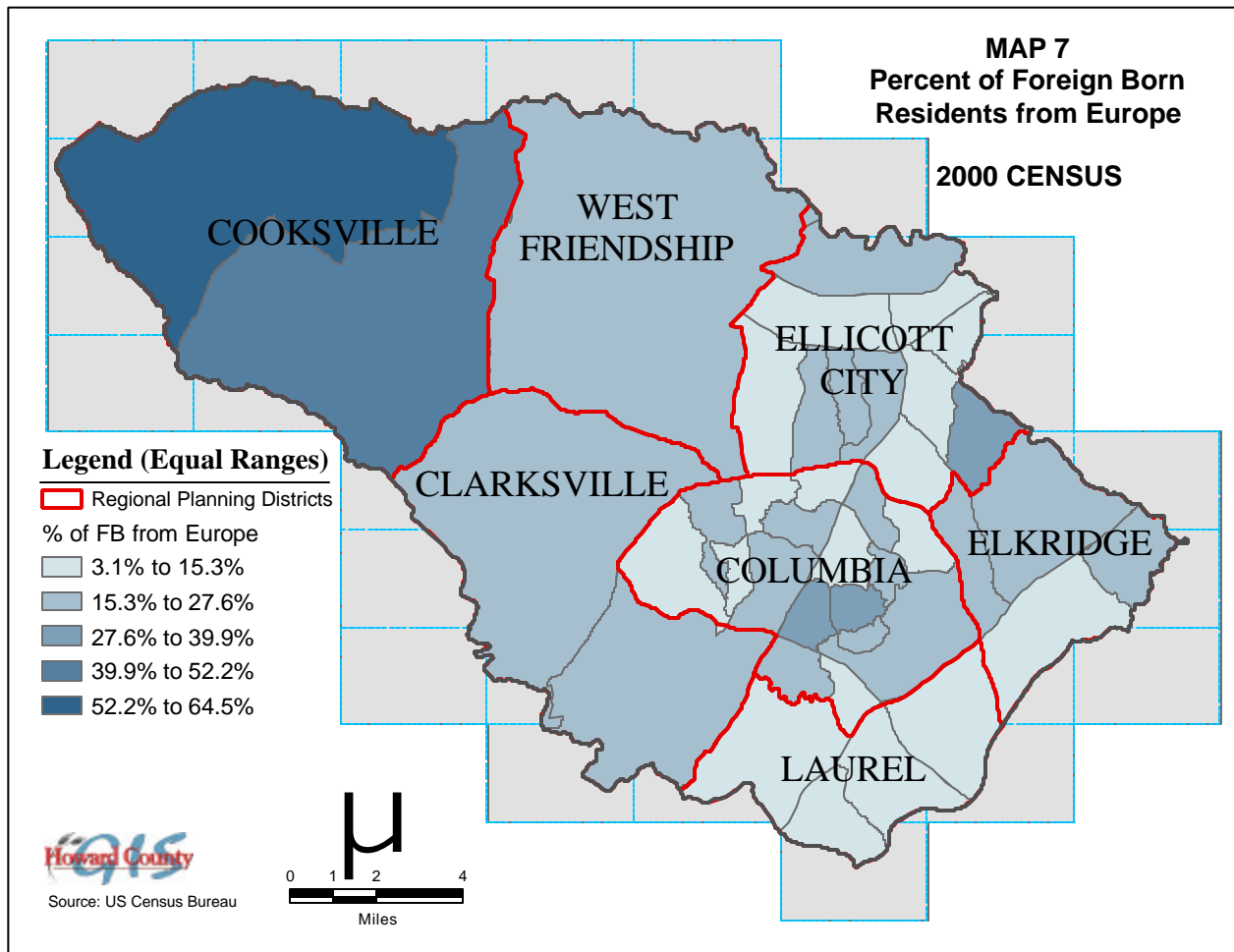
Source: U.S. Census

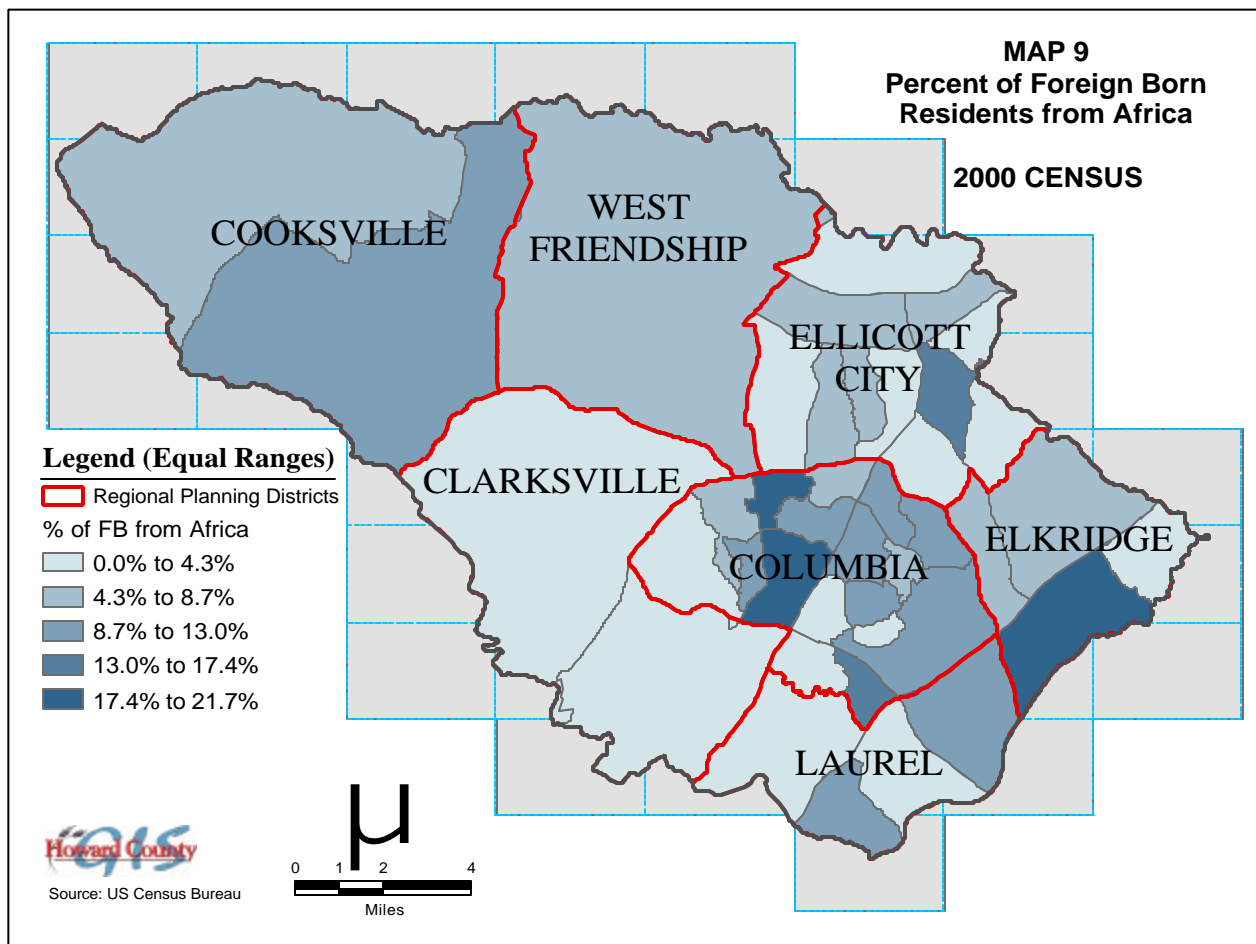
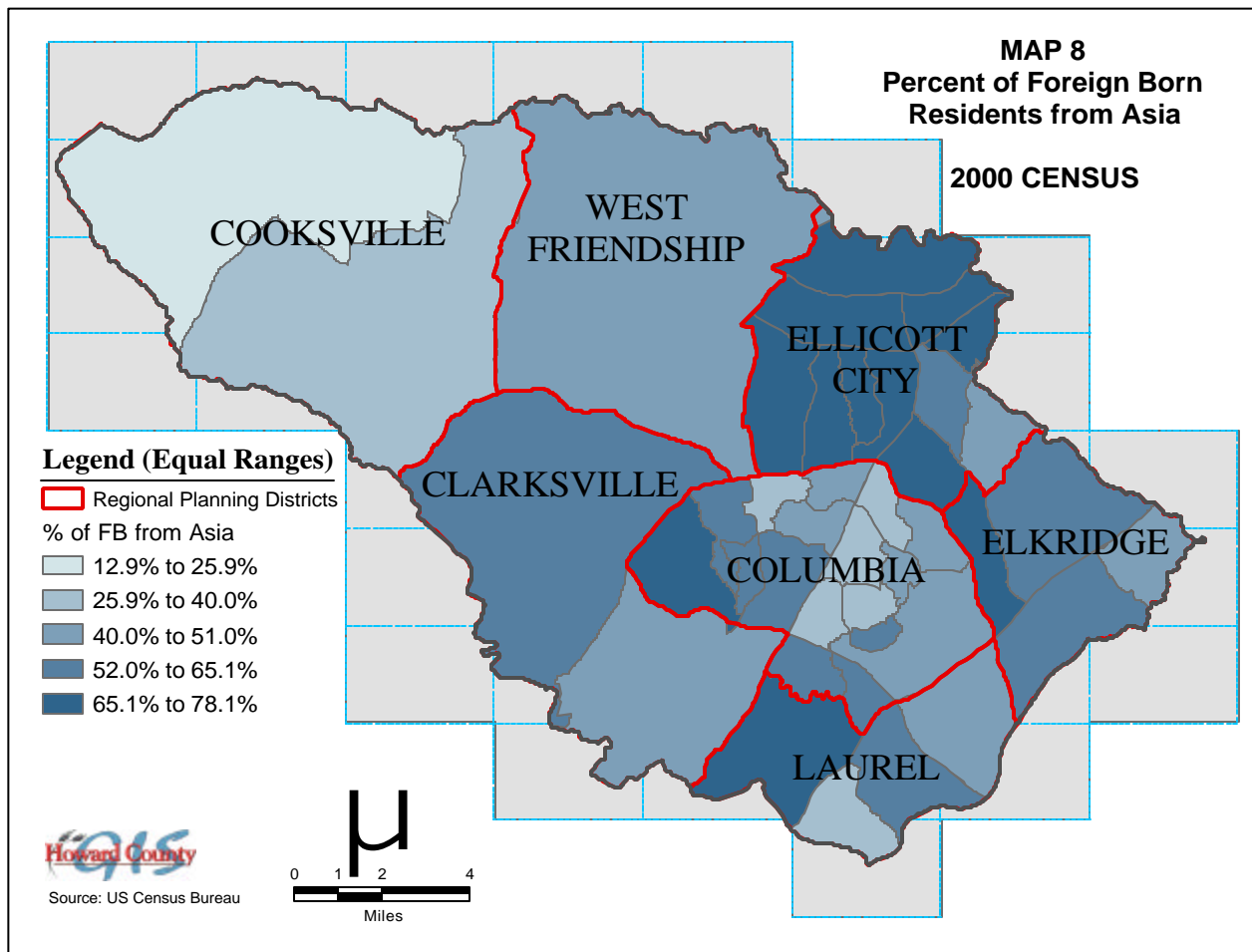


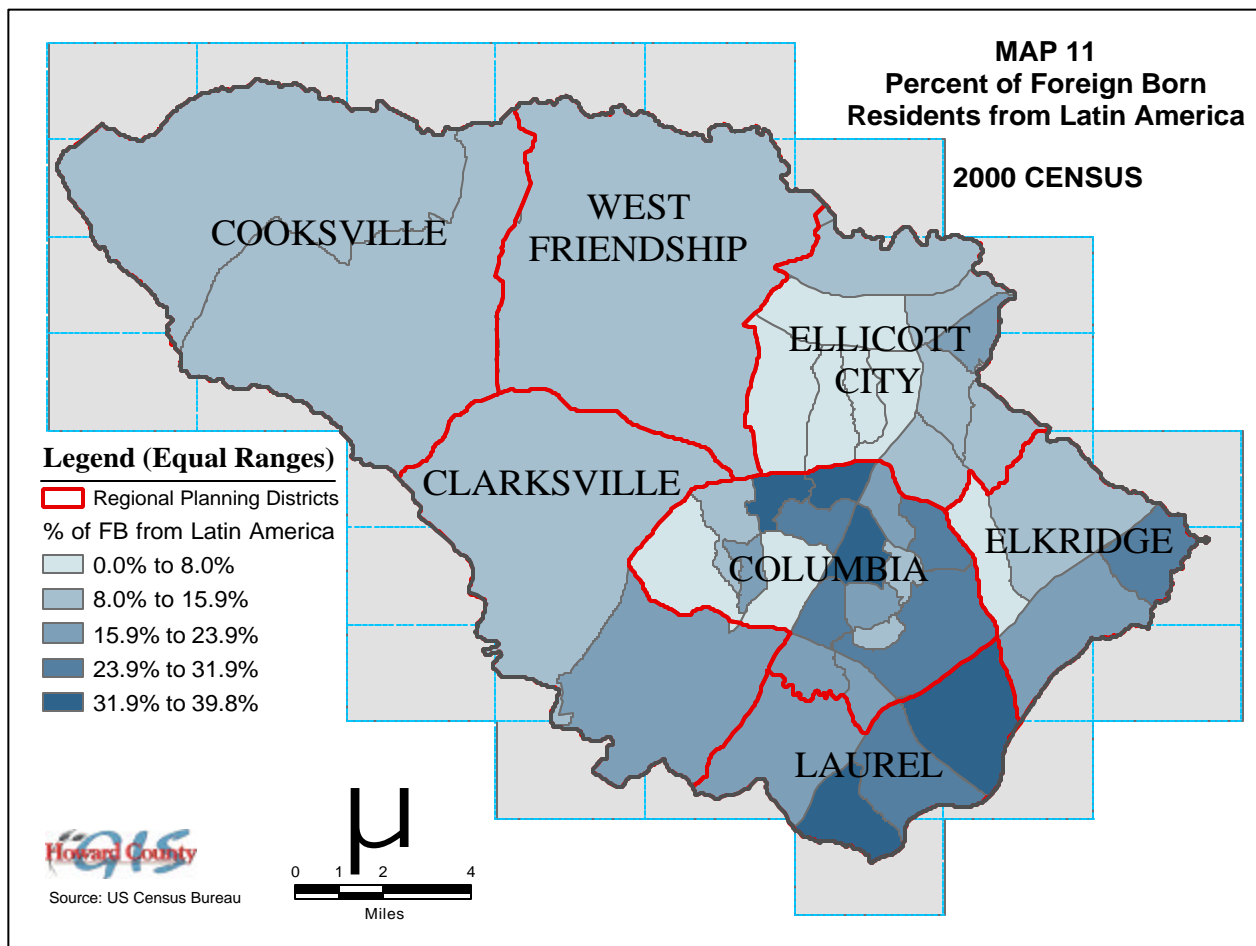
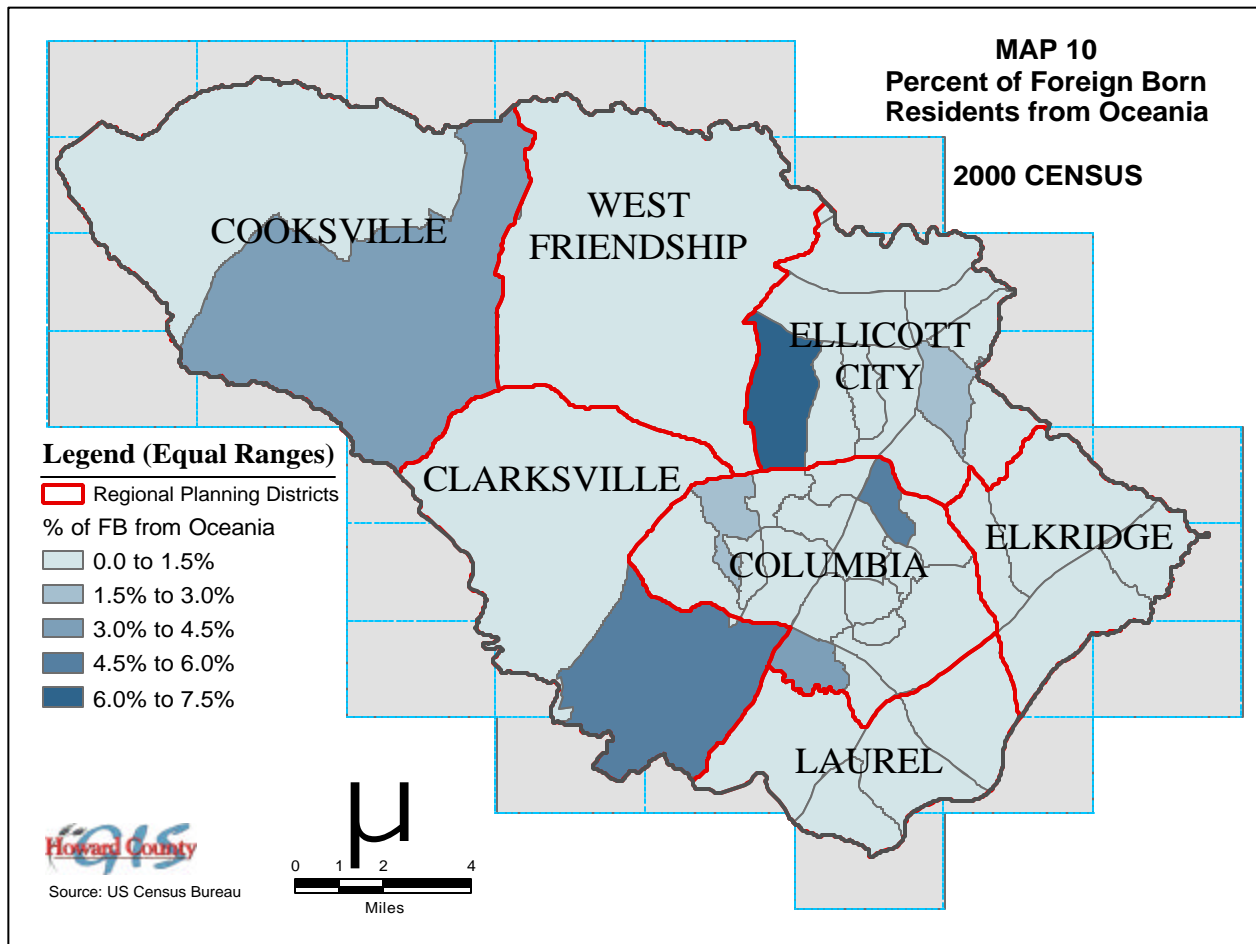
### Percent Region of Birth of Foreign Born by RPD Year 2000



Source: U.S. Census Bureau









**MAP 12**  
**Percent of Foreign Born**  
**Residents from Northern America**  
**2000 CENSUS**

