

LEGEND:	
CS-SEP	BRACED WALL PANEL (- LENGTH)
CS-FF	6'-1" NARROW WALL (- LENGTH) NARROW WALL WITHOUT HOLD-DOWNS (SEE DETAIL SHEET)
FFN	INTERMITTENT PORTAL FRAME
AW	ALTERNATE BRACED WALL
GB-1	GYP-SM 5/8" (1 SIDE)
GB-2	GYP-SM 1/2" (2 SIDES)
⊗	TE-DOWN DEVICE - (1 LB)

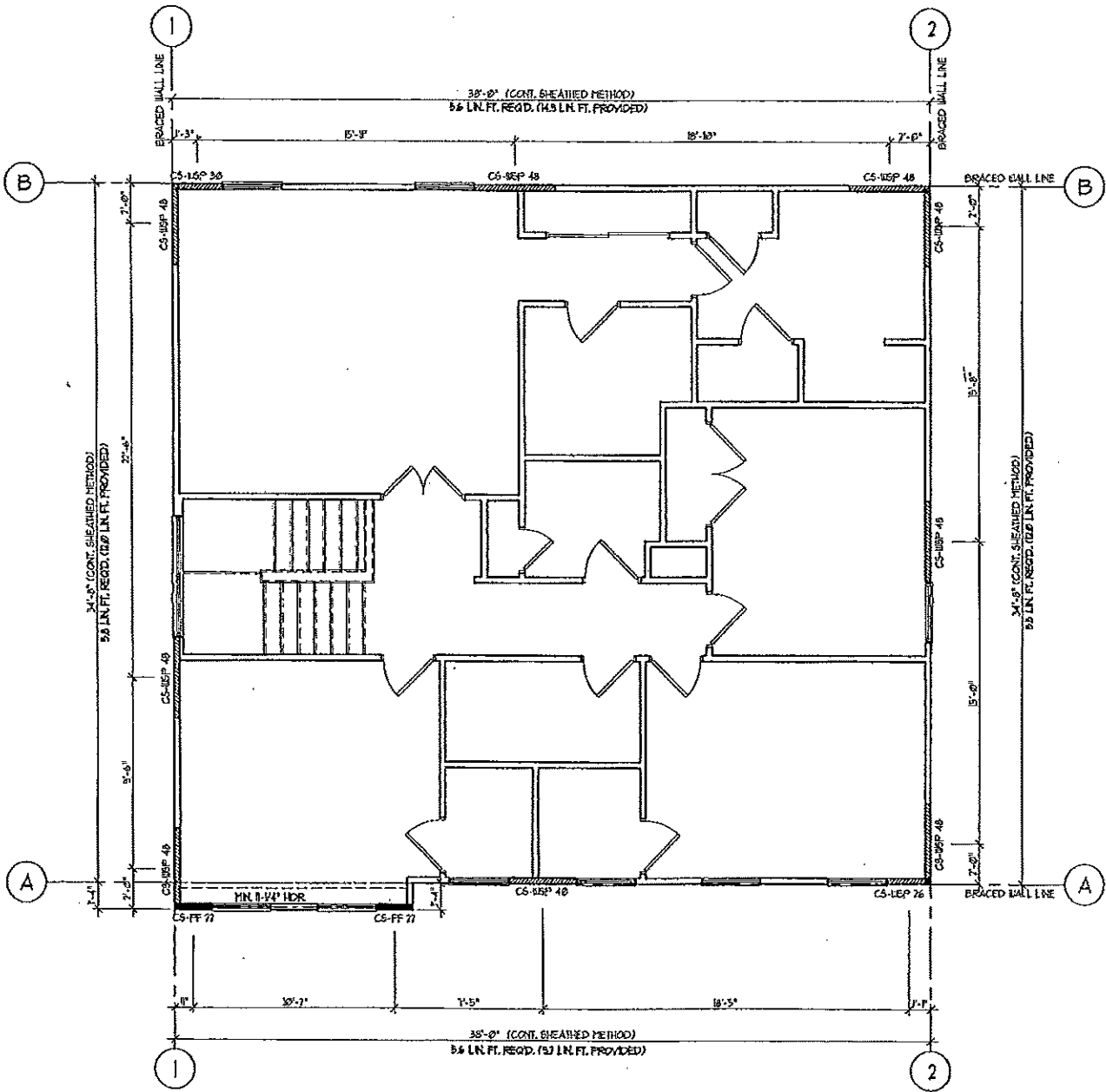
Sample Wall Bracing Drawings

WALL BRACING DESIGN INFO:

LOCATION: HOWARD COUNTY, MARYLAND
 SEISMIC CATEGORY: B
 WIND SPEED: 90 MPH

METHOD 3 (WOOD SHEATHING) / CONTINUOUS SHEATHING
 METHOD 5 (GYPSUM BOARD)

* THESE DRAWINGS ARE LIMITED TO IRC WALL BRACING REQUIREMENTS ONLY.



SECOND FLOOR WALL BRACING PLAN
 SCALE: 1/8" = 1/4" = 1'-0"