

HOWARD COUNTY HIGH INJURY NETWORK

DISCUSSION DRAFT

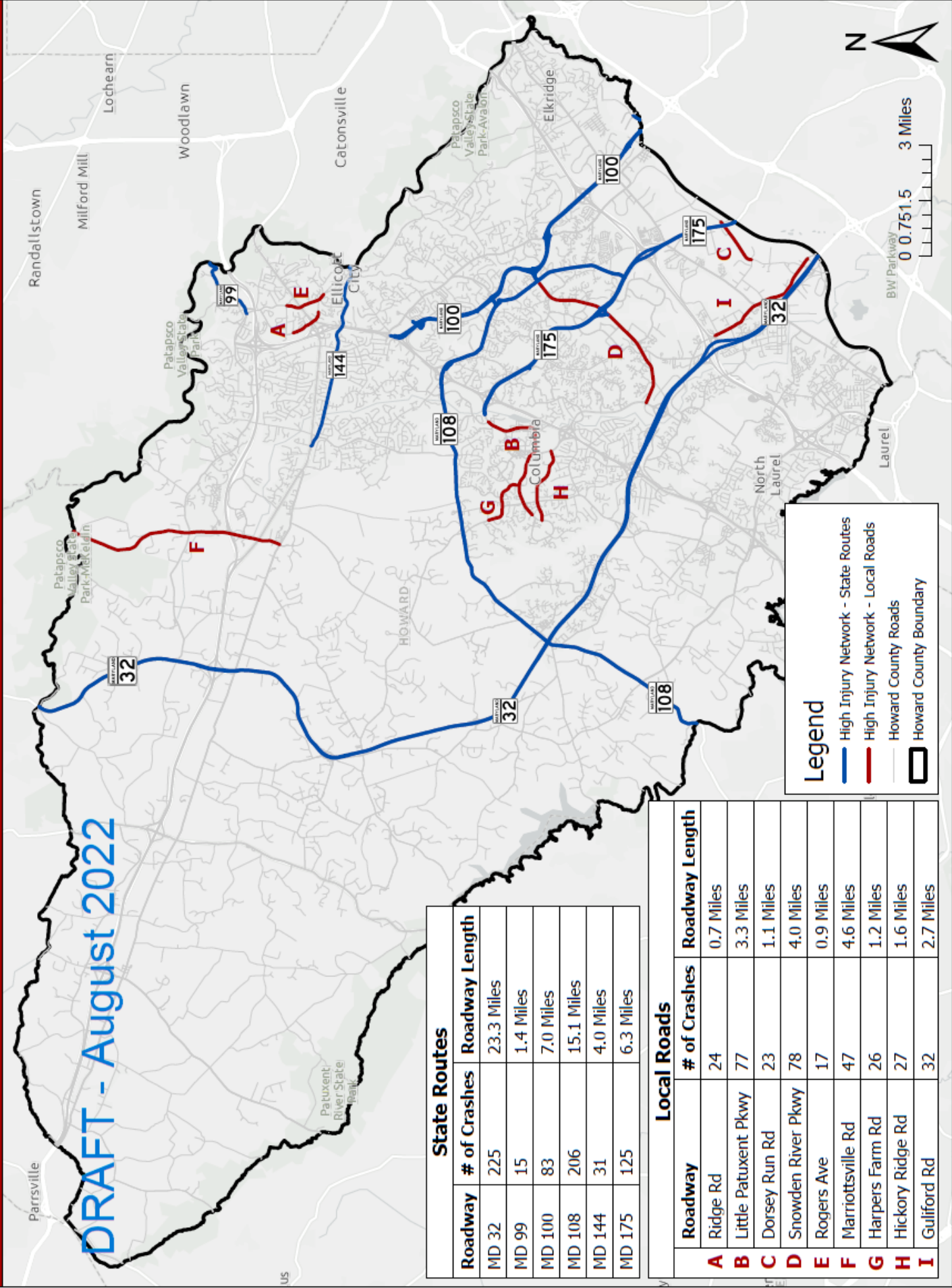
8/15/2022

As an outgrowth of the Howard County Strategic Roadway Safety Plan, the Howard County Office of Transportation has developed a draft map of the stretches of roadways where the highest concentrations of injury or fatal crashes occur on the transportation network. This is known commonly as the High Injury Network (HIN). Identification of a roadway on a HIN is not itself an assessment of whether a street or location is dangerous, rather it suggests which corridors within a transportation network carry a higher risk of injury. Risk is a function of many factors such as the design and posted speed, horizontal and vertical curvature, lighting levels, etc. Risk can also be mitigated, for example, by placing guard rails near steep curves or rumble strips along the centerline or edge of roadway for higher speed roads, increasing enforcement, and many other means. Thus, a High Injury Network simply identifies adverse safety outcomes in the transportation network so that stakeholders can make more detailed analytical efforts and inform investment and operational decisions to reduce the loss of life and occurrence of serious injuries on our roadways.

The draft High Injury Network map purposefully omits the National Highway System (Interstates 70 and 95, US Routes 1 and 29) and focuses instead on state and locally owned roads. This is because the scale of safety interventions necessary on the NHS is disproportionate to the resources and actions that could likely be taken by the county acting alone.

High Injury Network: State Routes (Non-Federal) and Local Roads

DRAFT - August 2022



State Routes		
Roadway	# of Crashes	Roadway Length
MD 32	225	23.3 Miles
MD 99	15	1.4 Miles
MD 100	83	7.0 Miles
MD 108	206	15.1 Miles
MD 144	31	4.0 Miles
MD 175	125	6.3 Miles

Local Roads		
Roadway	# of Crashes	Roadway Length
A Ridge Rd	24	0.7 Miles
B Little Patuxent Pkwy	77	3.3 Miles
C Dorsey Run Rd	23	1.1 Miles
D Snowden River Pkwy	78	4.0 Miles
E Rogers Ave	17	0.9 Miles
F Marriottsville Rd	47	4.6 Miles
G Harpers Farm Rd	26	1.2 Miles
H Hickory Ridge Rd	27	1.6 Miles
I Guilford Rd	32	2.7 Miles

High Injury Network for Howard County, Maryland						
County-owned Roadways Only						
Roadway	Injury Crashes	Fatal Crashes	Crashes per Mile per Year	Segment Length (Miles)	Number of Travel Lanes	Speed Limit
Ridge Rd Patapsco River Rd to Sonia Trl	24	0	8.57	0.7	4	35 MPH
Little Patuxent Pkwy Columbia Rd to Peartree Way	75	1	7.60	2.5	6	35 MPH
Dorsey Run Rd Patuxent Range Rd to Old Jessup Rd	23	0	5.23	1.1	2	35 MPH
Snowden River Rkwy Broken Land Pkwy to Waterloo Rd (108)	77	1	4.88	4	4	45 MPH
Rogers Ave Town and County Blvd to Martha Bush Dr	17	0	4.72	0.9	2	30 MPH
Marriottsville Rd Md 144 to Willow Green Way	37	2	4.64	2.1	4	45 MPH
Harpers Farm Rd Rivendell Ln to Little Patuxent Pkwy	20	2	4.58	1.2	4	35 MPH
Hickory Ridge Rd Little Patuxent Pkwy to Broken Land Pkwy	27	0	4.22	1.6	2	30 MPH
Guilford Rd Hilder Ave to Twelve Sons Ct	31	1	2.96	2.7	4	40 MPH

Data is from 2017 - 2020 using opendata.maryland.gov

High Injury Network for Howard County, Maryland						
State-owned (Non-Federal) Roadways Only						
Roadway	Injury Crashes	Fatal Crashes	Crashes per Mile per Year	Segment Length (Miles)	Number of Travel Lanes	Speed Limit
Maryland 175 MD 29 to Dorsey Run Rd	122	3	4.96	6.3	2	35 MPH
Maryland 108 Patuxent River to MD 175	199	7	3.41	15.1	2	45 MPH
Maryland 100 MD 29 to MD 295	81	2	2.96	7	4	55 MPH
Maryland 99 County Line to Rogers Rd	15	0	2.68	1.4	2	25 MPH
Maryland 32 River Rd to Dorsey Run Rd	221	4	2.41	23.3	4	55 MPH
Maryland 144 Centennial Ln to Patapsco River	30	1	1.94	4	2	35 MPH

Data is from 2017 - 2020 using opendata.maryland.gov