

# Michaels Way Drainage Improvement Project

Stormwater Management Division

Bureau of Environmental Services

9801 Broken Land Parkway, Columbia, MD 21043

Project Manager: Christine Lowe

[cslowe@howardcountymd.gov](mailto:cslowe@howardcountymd.gov)

410-313-0522



# Agenda

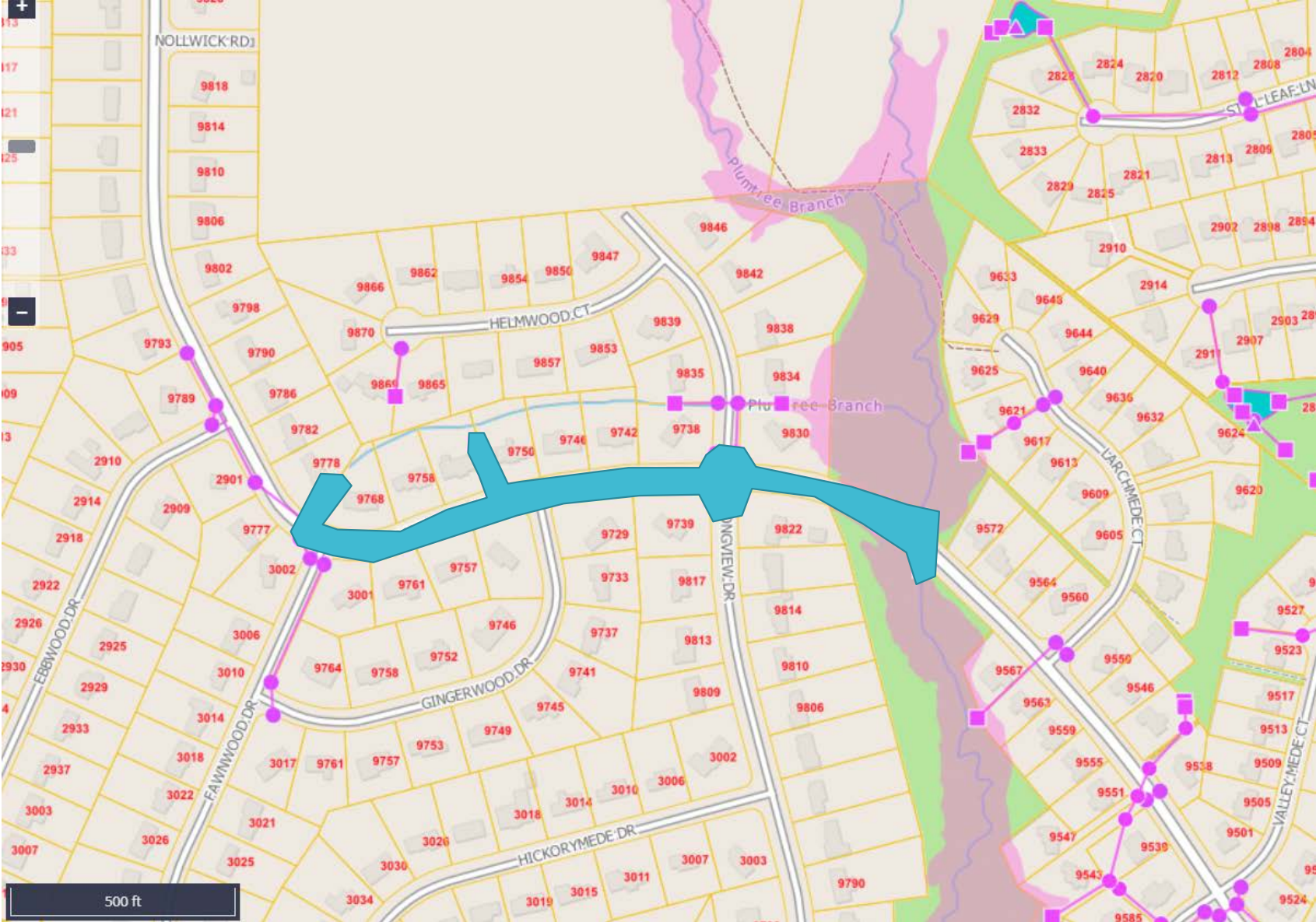
- Background
- Overview of Project
- Current Conditions
- Proposed Design
- What to Expect
- Questions / Comments

# What is Howard County Doing for Stormwater Management

- Bureau of Highways
  - Maintenance of existing storm drain infrastructure and roadways
- Bureau of Engineering – Transportation & Special Projects Division
  - Transportation infrastructure projects
  - Large park capital projects
  - Drainage improvement projects
- Bureau of Environmental Services – Stormwater Management Division
  - Pond repairs and retrofits
  - Stream restoration
  - **Drainage improvement projects**

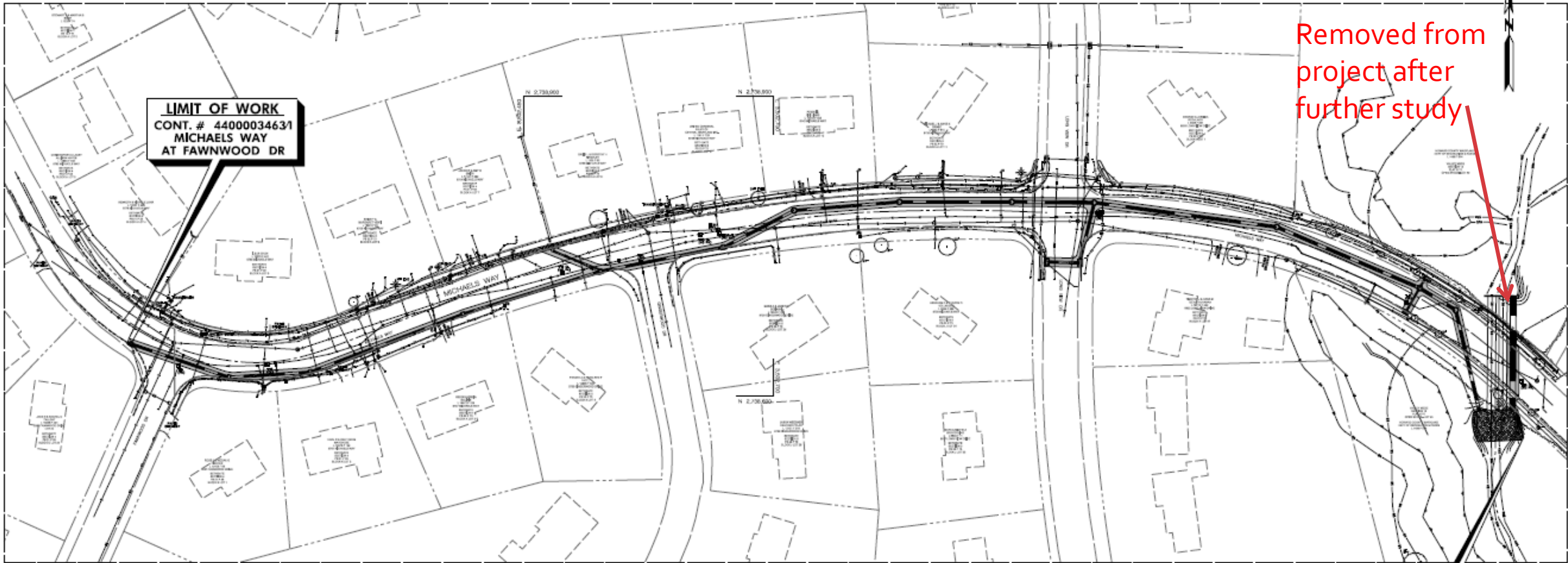
**Purpose: to replace and upgrade the storm drain infrastructure along Michaels Way between Fawnwood Drive and Plumtree Branch, in the vicinity of Longview Drive**

# Michaels Way Drainage Improvement Project



# Current Conditions





**LIMIT OF WORK**  
CONT. # 44000034631  
MICHAELS WAY  
AT FAWNWOOD DR

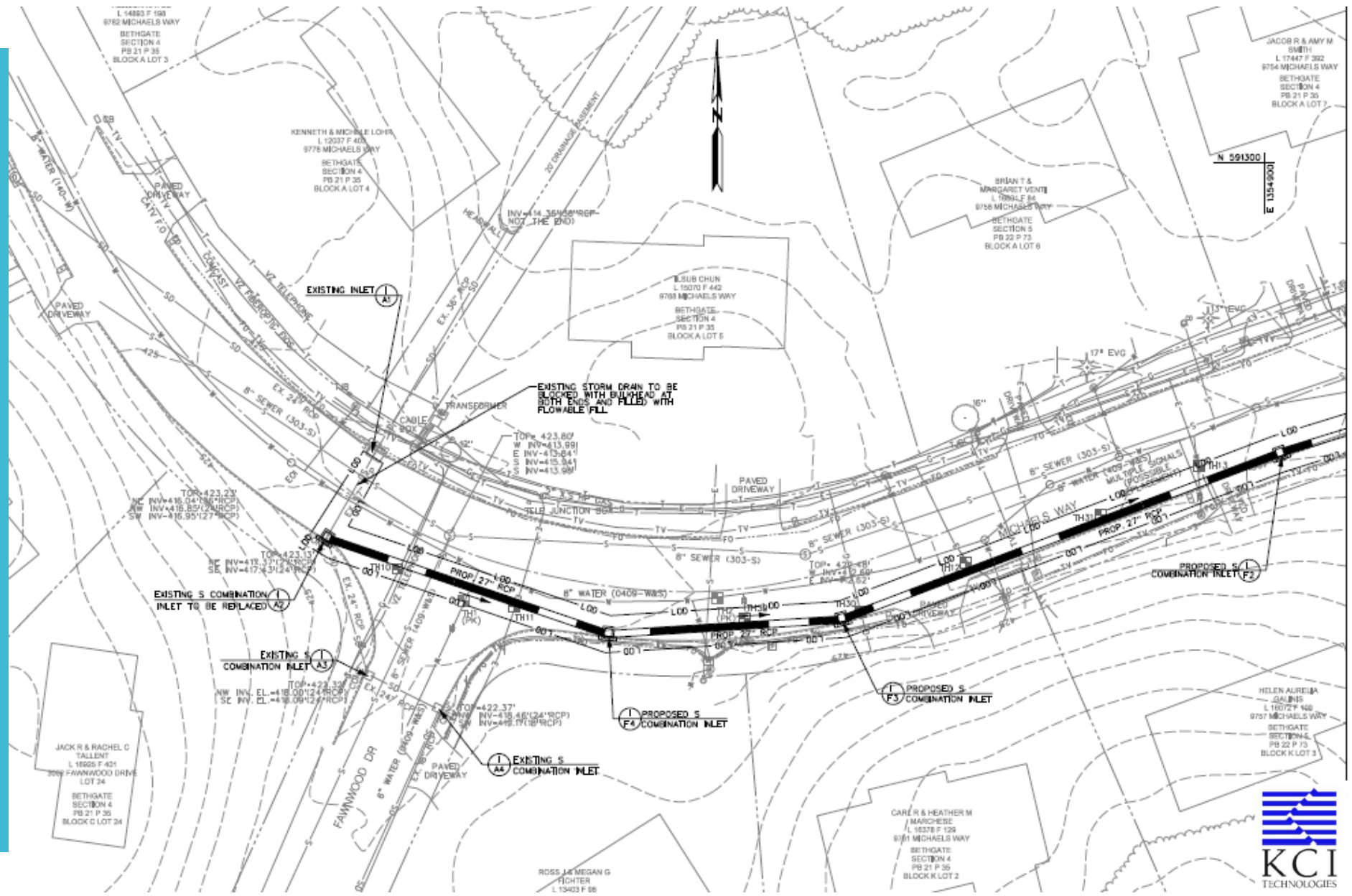
Removed from  
project after  
further study

**LIMIT OF WORK**  
CONT. # 44000034631  
MICHAELS WAY  
AT PLUMTREE BRANCH



# Proposed Design

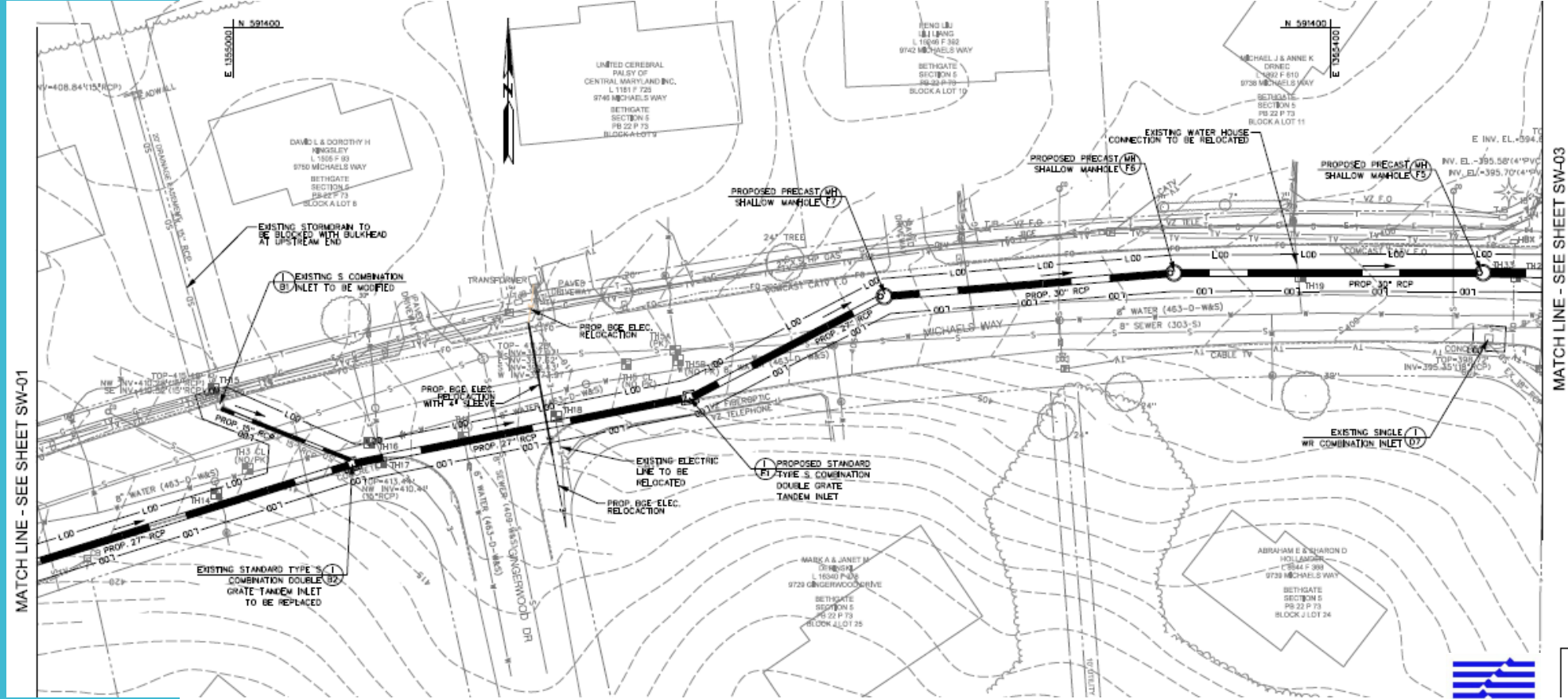
# Proposed Design



MATCH LINE - SEE SHEET SW-02

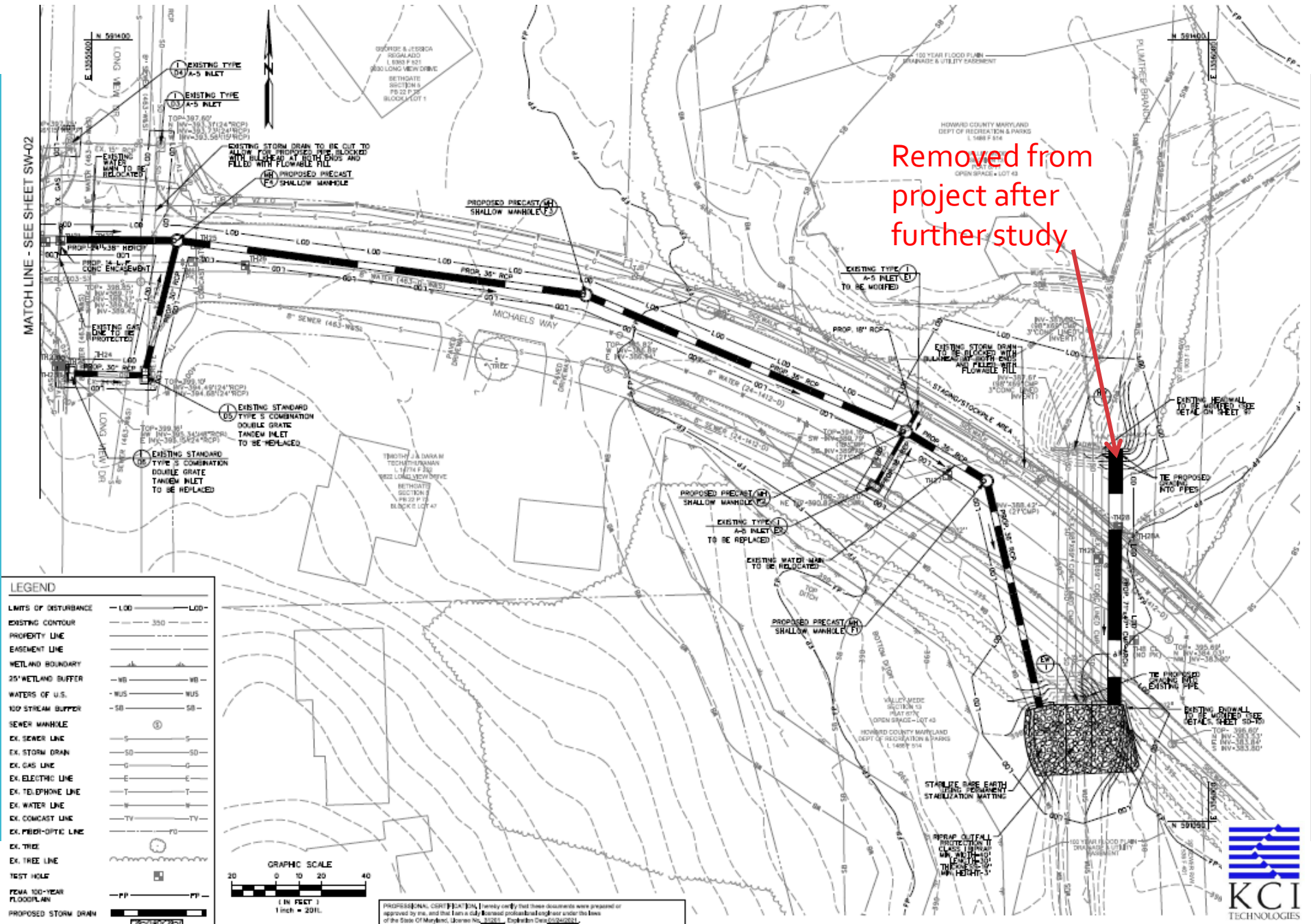


# Proposed Design





# Proposed Design



Removed from project after further study



# What to Expect During Construction

- **Duration**
  - BGE relocations – by July 2022
  - Drainage Improvement – after July 2022, approximately 4-5 months
- **Safety**
  - Construction site will be fenced with orange construction safety fence to separate construction from residents
- **Construction Hours**
  - Monday to Friday, 7AM to 4PM
- **Noise**
  - Contractor is required to comply with Howard County Noise Ordinance
- **Sediment**
  - Contractor is required to comply with Howard County Sediment Control Permit and not track dirt onto roads

# What to Expect During Construction

- **Traffic**
  - Lane closures and detours during construction for through traffic
    - Closure and Detour: between Longview Drive and Plumtree Branch (access to 9822 Longview Drive will be maintained) for construction and staging
    - Daily Flagging: intersection of Longview Drive & Michaels Way
    - Daily Flagging and Temporary Detour: from Longview Drive to Fawnwood Drive
  - Minor impacts to traffic from entering and exiting construction vehicles
- **Utility Relocations**
  - BGE underground utilities (completed by BGE prior to County work)
    - Electric: corner of Gingerwood Drive and Michaels Way
    - Gas: Longview Drive and Michaels Way intersection
  - County Water (during County work)
    - Water Main: Longview Drive and Michaels Way intersection
    - Water Main: in Michaels Way near Plumtree Branch
    - House Connection: 9738 Michaels Way

# Questions?

- Bureau of Environmental Services – Stormwater Management Division
  - Christine Lowe, Project Manager
  - [cslowe@howardcountymd.gov](mailto:cslowe@howardcountymd.gov), 410-313-0522
- Bureau of Highways
  - [highways@howardcountymd.gov](mailto:highways@howardcountymd.gov), 410-313-7450
- Bureau of Engineering – Transportation & Special Projects Division
  - Brandon Love, Division Chief
  - [bllove@howardcountymd.gov](mailto:bllove@howardcountymd.gov), 410-313-2014