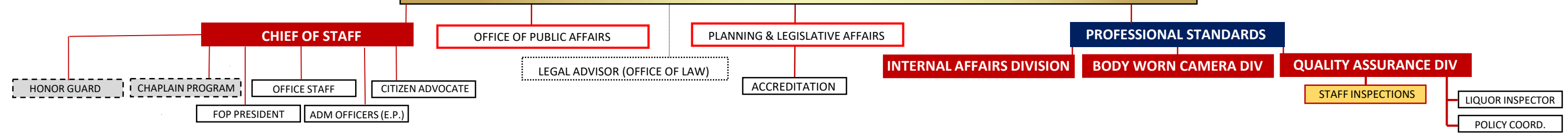
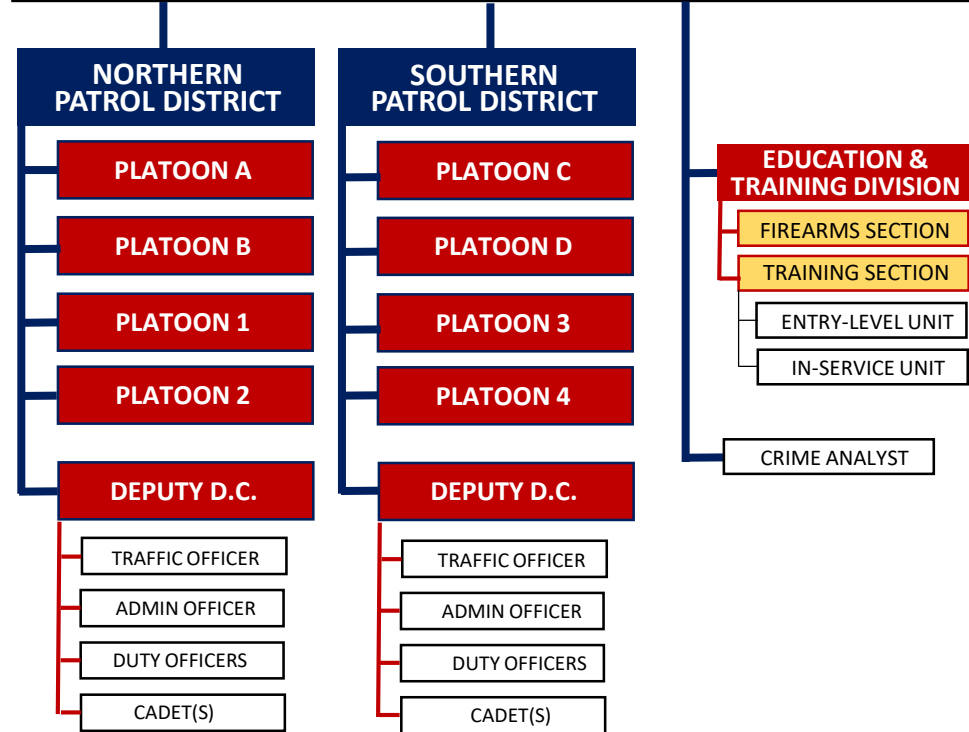




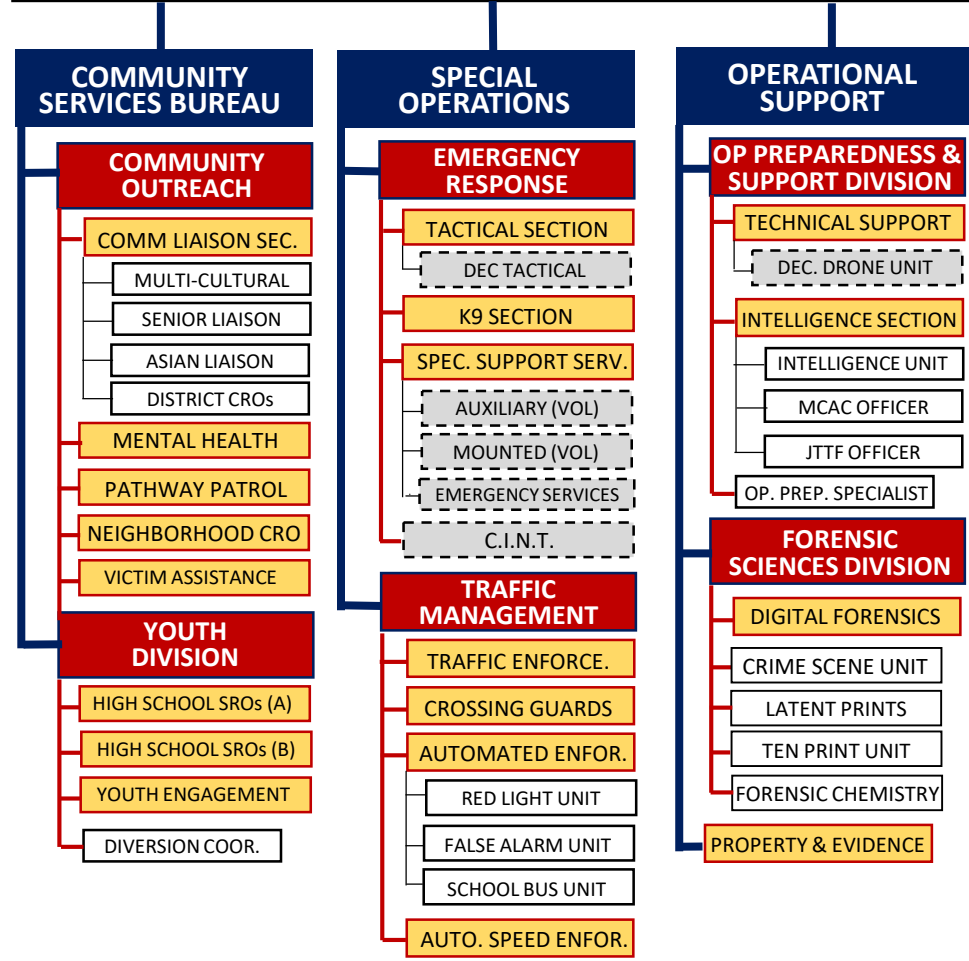
CHIEF OF POLICE



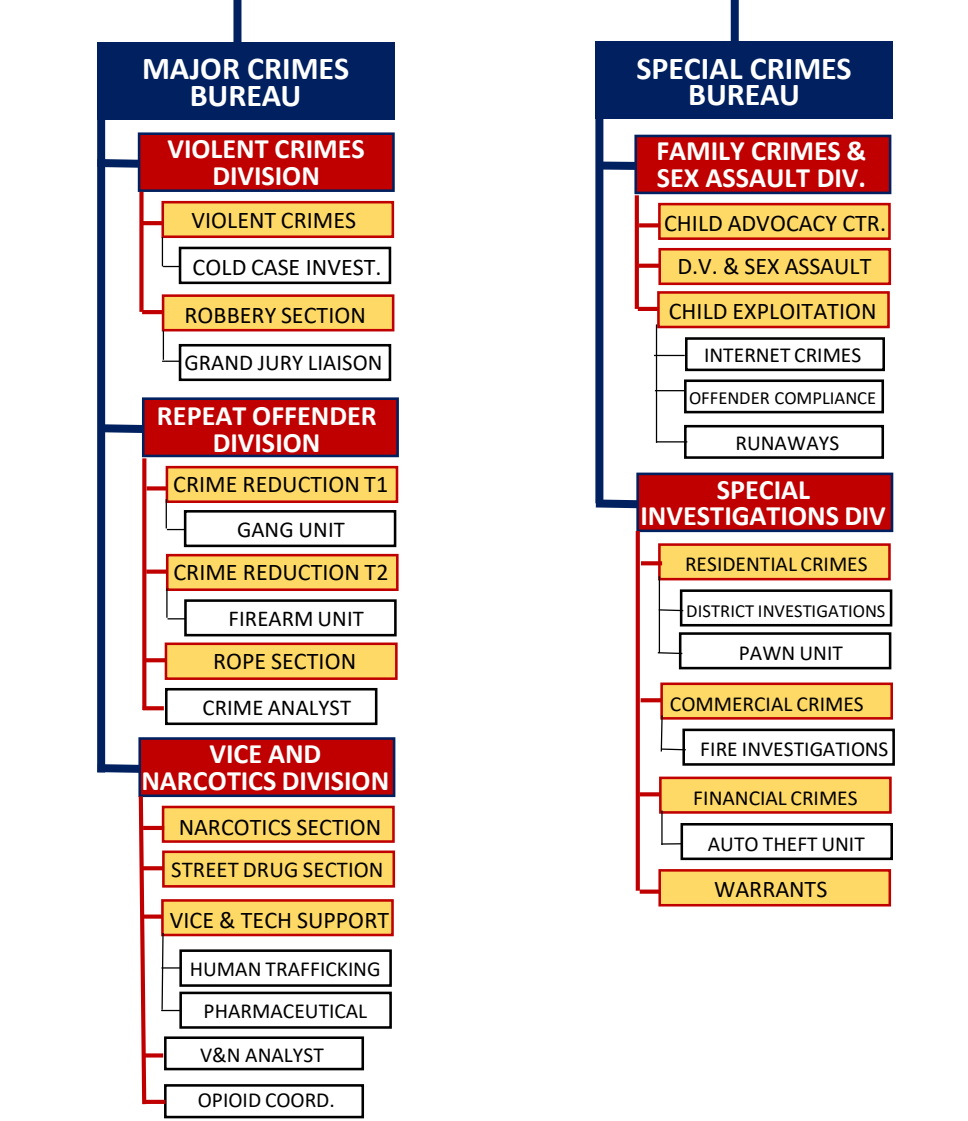
FIELD OPERATIONS COMMAND



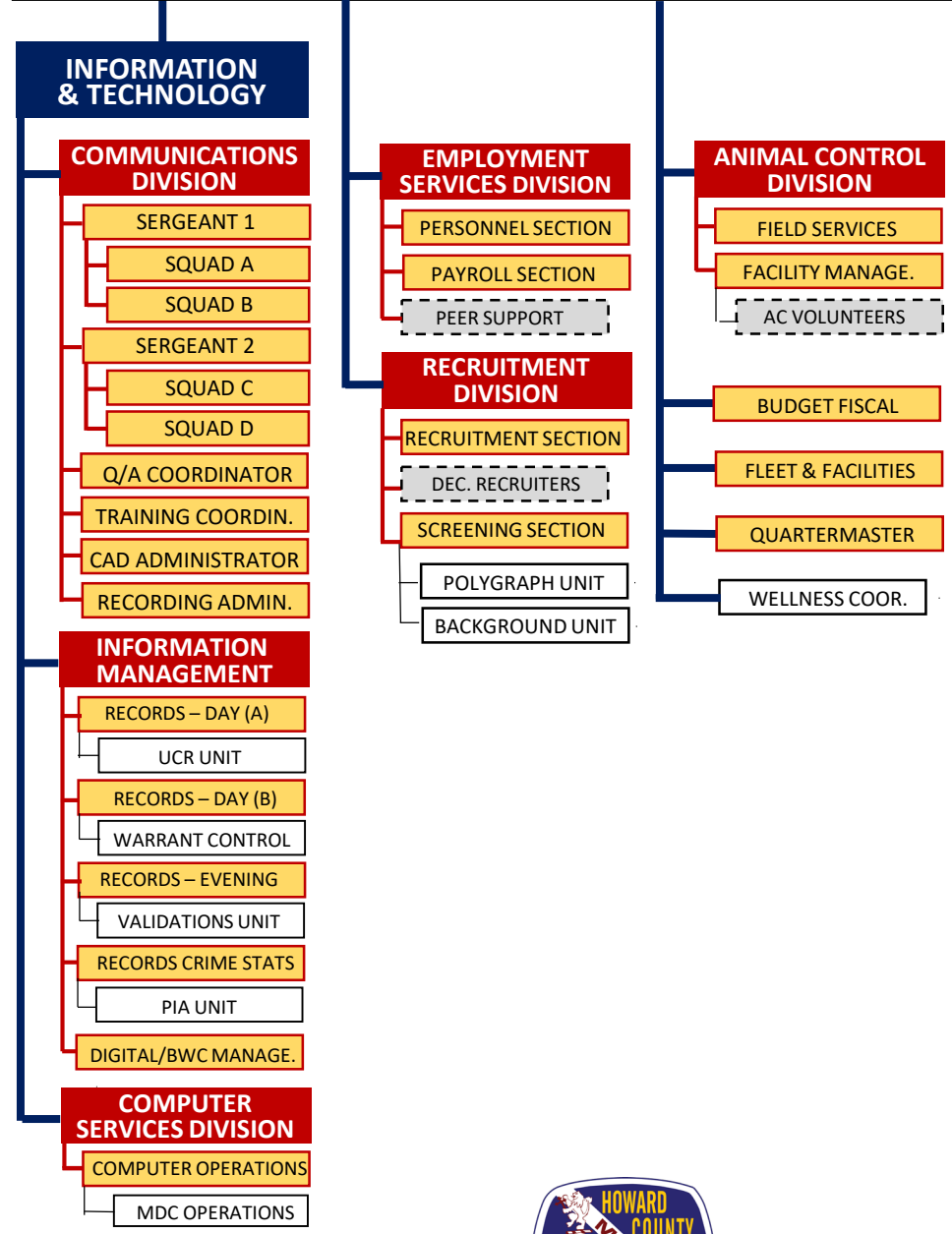
SPECIAL OPERATIONS COMMAND



CRIMINAL INVESTIGATIONS COMMAND



ADMINISTRATION COMMAND



HOWARD COUNTY POLICE ORGANIZATIONAL STRUCTURE

LEGEND

- COMMAND: UNDER THE DIRECTION OF A DEPUTY CHIEF (MAJOR)
- BUREAU OR DISTRICT: UNDER THE COMMAND OF A CAPTAIN
- DIVISION OR PLATOON: COMMANDED BY A LIEUTENANT OR CIVILIAN MANAGER
- SECTION OR SQUAD: SUPERVISED BY A SERGEANT OR CIVILIAN SUPERVISOR
- UNIT: ORGANIZATIONAL COMPONENT OF A SECTION
- DECENTRALIZED TEAM: NOT A FULL TIME PRIMARY ASSIGNMENT

HOWARD COUNTY POLICE DEPARTMENT ORGANIZATIONAL STRUCTURE



HOWARD COUNTY POLICE DEPARTMENT ORGANIZATIONAL CHART
 APPROVED BY CHIEF LISA MYERS ON 9/15/21
 EFFECTIVE 10/1/21 VERSION 71.L OCP: Strategic Planning/tgb