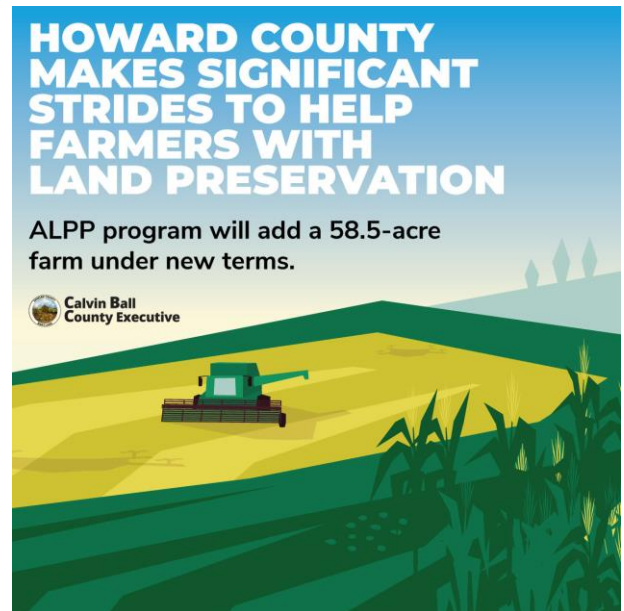


On December 13, 2023, Howard County Executive Calvin Ball announced that the Agricultural Land Preservation Program (ALPP) has updated its financing terms to incentivize even more farmers to preserve their land as “Farmland Forever.” The program provides payments from the County’s Agricultural Preservation Fund to property owners to prevent the loss of farmland. The ALPP offers property owners the opportunity to sell their development rights to the County in exchange for an agricultural preservation easement that protects the land in perpetuity. Acquisitions are secured by installment purchase agreements (IPAs) that disburse semi-annual, tax-exempt interest and annual principal payments over the contract term.



In anticipation of the ALPP’s upcoming 40th anniversary next year and in support of recent recommendations made by the Agricultural Preservation Board, the ALPP will now offer three different IPA payment options so that farmers can request the terms that best meet their financial and operational goals:

- A 15-year term with 10% down and a 2.50% interest rate
- A 20-year term with 10% down and a 3.00% interest rate
- A 20-year term with 15% down and a 1.00% interest rate

To be eligible for the ALPP, properties must be 20 acres or larger, meet certain soils criteria and have capacity for future development. The County pays up to \$40,000 per acre to purchase agricultural easements under the ALPP. Fueled by transfer tax revenues, the Agricultural Preservation Fund underwrites the cost of the ALPP and other related programs that enhance and sustain local farming. More than 23,100 acres are currently preserved under an ALPP or state agricultural easement.

To learn more about the ALPP, please contact Joy Levy, ALPP Administrator, at jlevy@howardcountymd.gov or 410-313-5407. Please direct email inquiries to Lauren Longo, Planning Specialist at llongo@howardcountymd.gov