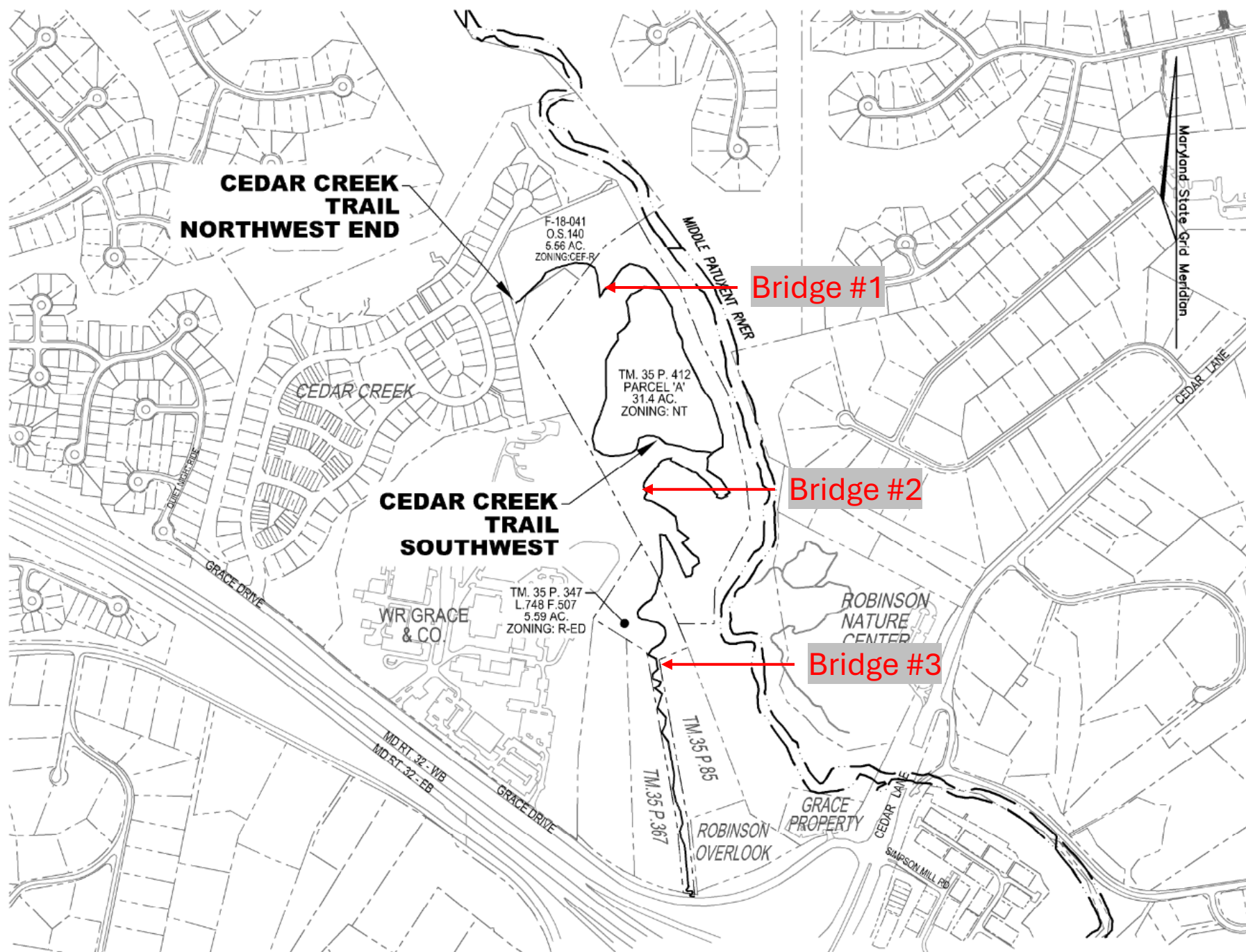


SDP-19-025

Cedar Creek Nature Trail

Planning Board Meeting

January 22, 2026



LOCATION MAP

SCALE: 1" = 500'



Zoning & Vicinity

**Cedar Creek Trail
SDP-19-025**



0 0.1 0.2 mi.

Zoning

B-1
CEF-R
NT
PEC
POR

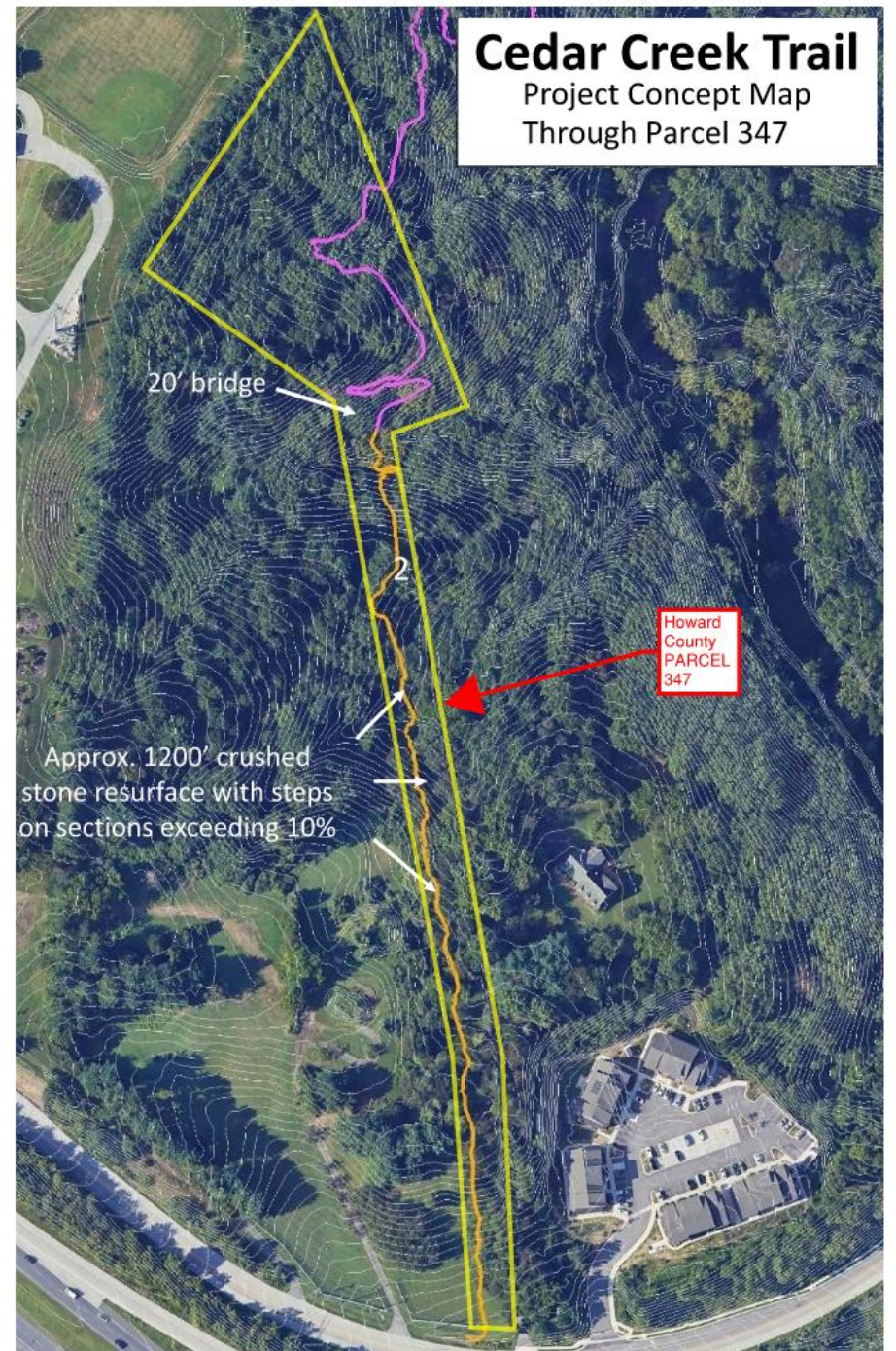
PSC
R-20
R-ED
R-SA-8
RR-DEO



Location in
County

Cedar Creek Trail

Project Concept Map
Through Parcel 347

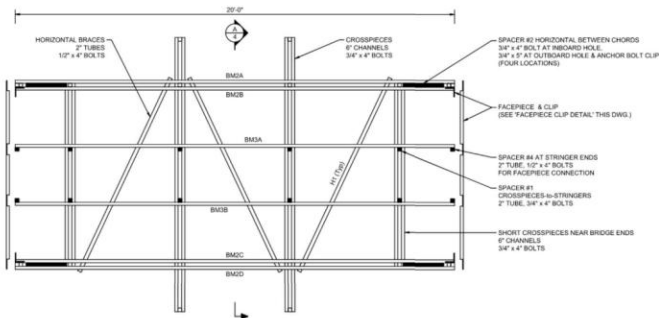
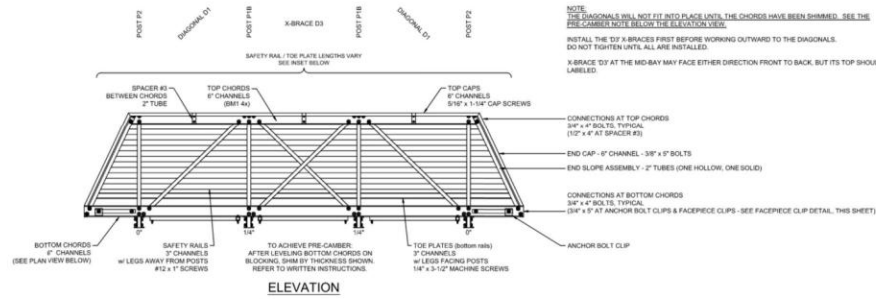


QTY	DESCRIPTION	LENGTH (LN)	WT. (LBS)
1	BR1	157.126	42
2	BR2A-BR2D	240	52
2	BR2C-BR2C	240	52
2	BR2A-BR2D	240	52
4	Compripeg	149	32
4	Short Crosspieces	100	22
2	Top Cap	391.1316	26
4	End Cap	56.318	8
2	Facepiece	100	21
4	Facepiece Clips	5	1
14	Single Span Rail to Sloped Ends	194	
4	Post P1B	62.514	10
4	Post P2	62.514	10
4	Diagonal D1	79.1116	22
2	D1 X-Brace Assy	79.118	33
4	48" Ck End Slope Assembly	118.514	24
3	Horizontal Brace B1	118.514	17
4	Outrigger Plates (set of 2)	4.122	1
8	C/S Spacer #1	11.314	1
4	Spacer #2	22	3
4	C/S Spacer #3	6	1
4	C/S Spacer #4	5	1
18"	GR120 SuperDeck Lids	95.122	58
2	GR120 SuperDeck Lids - Sloped End	95.122	57
8	Anchor Bolt C/S-1003	4	2

*Estimated quantity



TYPICAL FRP - ISOMETRIC VIEW
SCALE: N.T.S.



BRIDGE PLAN at BOTTOM CHORDS

APPROVED: HOWARD COUNTY DEPARTMENT OF PLANNING AND ZONING

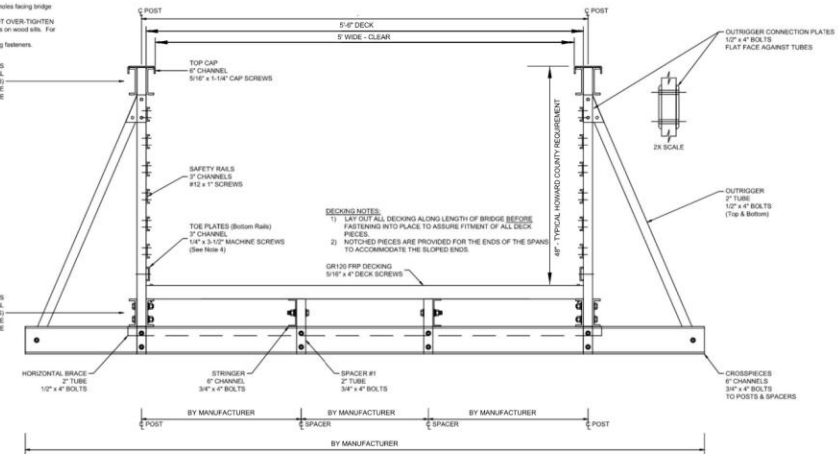
CHIEF, DEVELOPMENT ENGINEERING DIVISION DATE
CHIEF, DIVISION OF LAND DEVELOPMENT DATE
DIRECTOR DATE



- GENERAL NOTES:
- 1) Be sure to install all vertical posts with safety rail plate holes facing bridge walking.
 - 2) Tighten all nuts until lock washer closes firmly. DO NOT OVER-TIGHTEN.
 - 3) FRP Shims are required for use under anchor bolt clips on wood sub. For concrete foundations, grouting is preferred.
 - 4) Install Toe Plates after decking for clearance of decking fasteners.

CONNECTIONS ALONG TOP CHORDS
3/4" x 4" BOLTS, TYPICAL
(1/2" x 4" AT SPACER #1)
FLAT WASHER / LOCK WASHER / NUT TO OUTSIDE FACE
BOLT HEAD / FLAT WASHER TO INSIDE FACE

CONNECTIONS ALONG BOTTOM CHORDS
3/4" x 4" BOLTS, TYPICAL
(SEE ELEVATION VIEW FOR VARIATIONS)
FLAT WASHER / LOCK WASHER / NUT TO INSIDE FACE
BOLT HEAD / FLAT WASHER TO OUTSIDE FACE



SECTION A-A
TYPICAL TRUSS

NOTE:
BRIDGE ABUTMENTS TO BE DESIGNED BY OTHERS.

OWNER: PARCEL 147
HOWARD COUNTY, MARYLAND
DEPT. OF RECREATION AND PARKS
3400 NORTH RIDGE ROAD
COLUMBIA, MARYLAND 21044

OWNER: PARCEL 1450, S. 140
COWD COUNTY, MARYLAND
HONEYMEAD ESTATES, INC.
4700 ORANGE MEALS BLVD.
COLUMBIA, MARYLAND 21117

OWNER: PARCEL 411 (P.A.)
MR. DAVID A. COLE - OWNER
2201 BRADY BLVD.
COLUMBIA, MARYLAND 21044

DEVELOPER
TIMMONS GROUP, LLC
4700 BRADY BLVD.
COLUMBIA, MARYLAND 21044

NO. REVISION DATE

SITE DEVELOPMENT PLAN
TYPICAL FRP - BRIDGE DETAILS
CEDAR CREEK
NATURAL SURFACE TRAIL

1/4" MAY 20 GRID 16.21.22 ZONED: NE, R-ED & CEF-R P.412, P.347 & P/O PARCEL 145 SDI ELECTION DISTRICT

VOGEL ENGINEERING
TIMMONS GROUP
3300 NORTH RIDGE ROAD, SUITE 110, ELLICOTT CITY, MD 21043
P: 410-661-7666 F: 410-661-8961 www.timmons.com

DESIGN BY: VE & TC
DRAWN BY: VE & TC
CHECKED BY: BMT
DATE: OCTOBER 2025
SCALE: AS SHOWN
W.D. NO.: 15-55

18 SHEET OF 20

CP CREATIVE PULTRUSIONS
214 Industrial Lane, P.O. Box 6
Alum Bank, Pennsylvania 15521-0006
www.creativepultrusions.com

THIS PRINT IS THE PROPRIETARY PROPERTY OF CREATIVE PULTRUSIONS INC. (CPI) AND SHALL NOT BE REPRODUCED OR COPIED WITHOUT THE WRITTEN PERMISSION OF CPI.

Tamar Drive 20' Bridge
20'x8'x48"
B ±1/16" Field Parts List

SCALE: DRAWING NOT TO SCALE



Bridge Example

