

# Woodcrest Drive Pond Retrofit and Woodcrest Stream Rehabilitation Projects

Stormwater Management Division

Bureau of Environmental Services

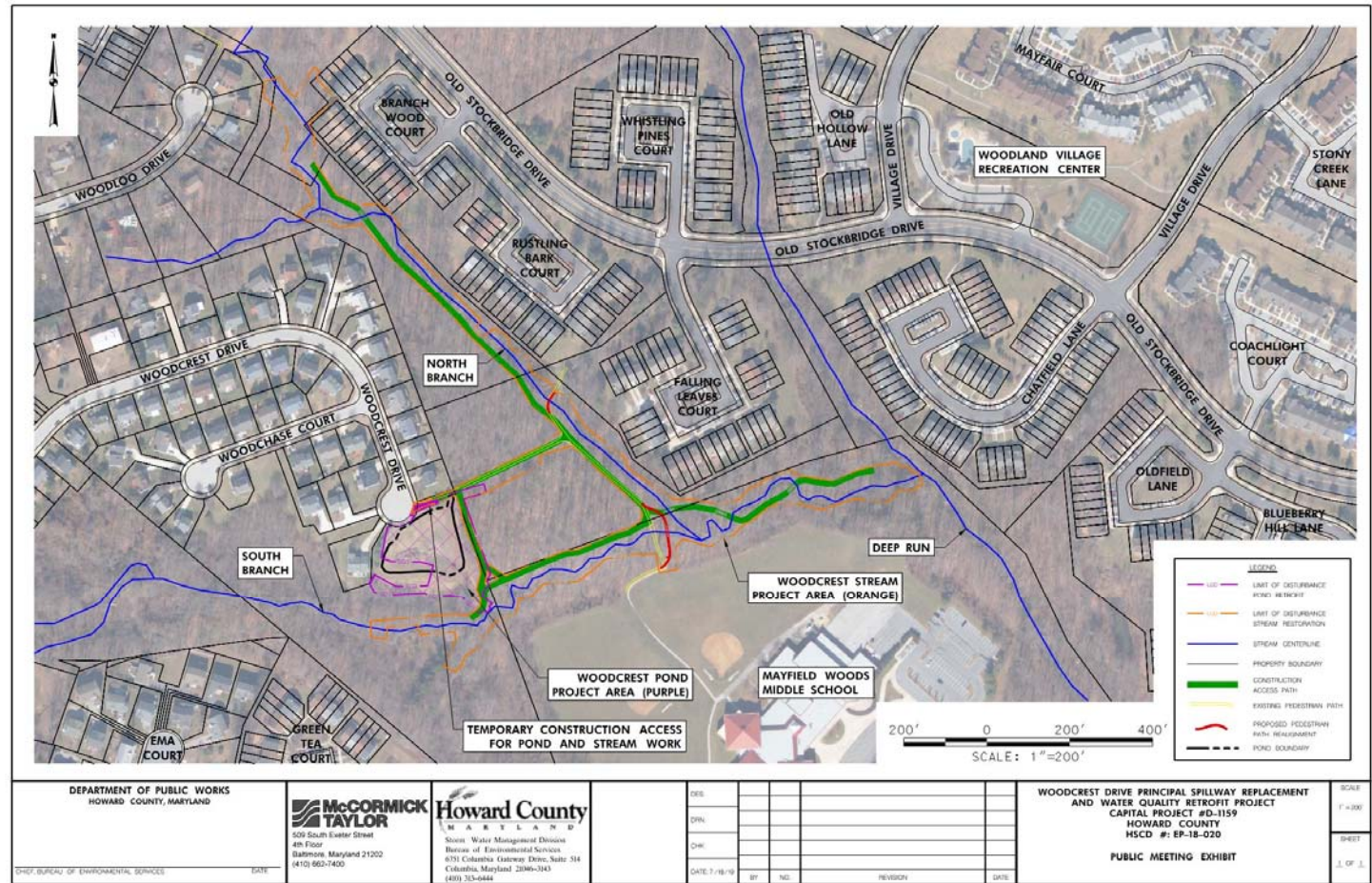
9801 Broken Land Parkway, Columbia, MD 21043



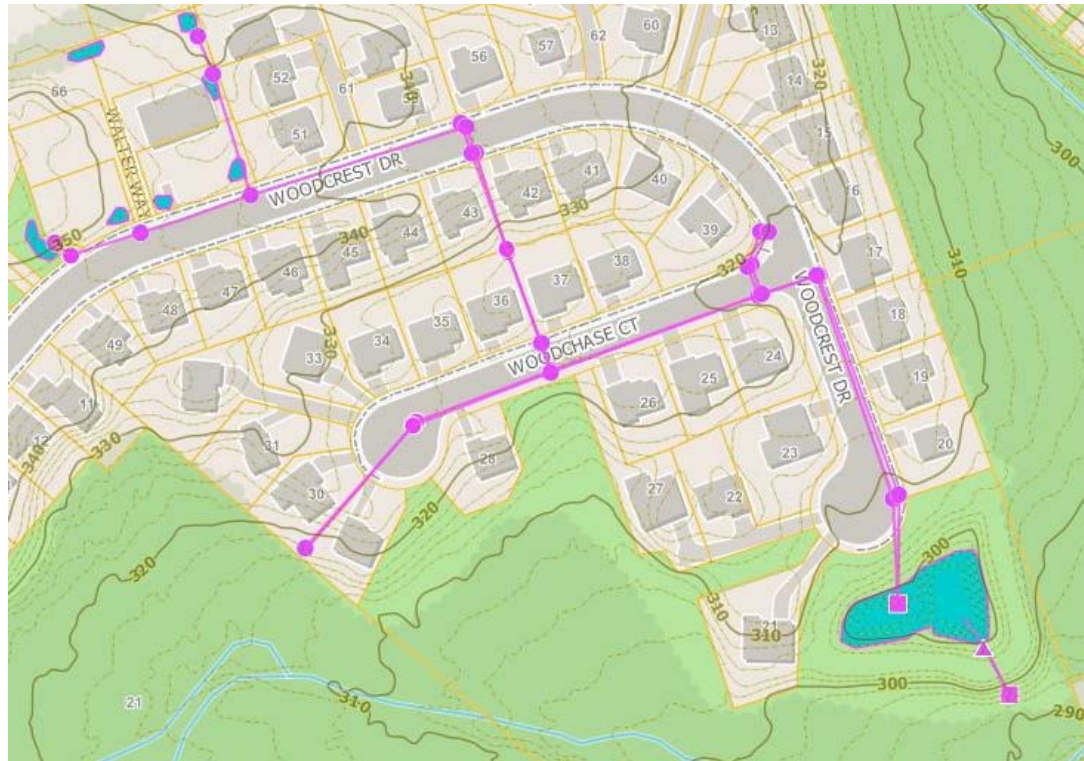
# Agenda

- Introductions
- Woodcrest Drive Pond Retrofit Project
- Woodcrest Stream Rehabilitation Project
- Questions / Comments

# Woodcrest Projects



# Woodcrest Drive Pond Retrofit





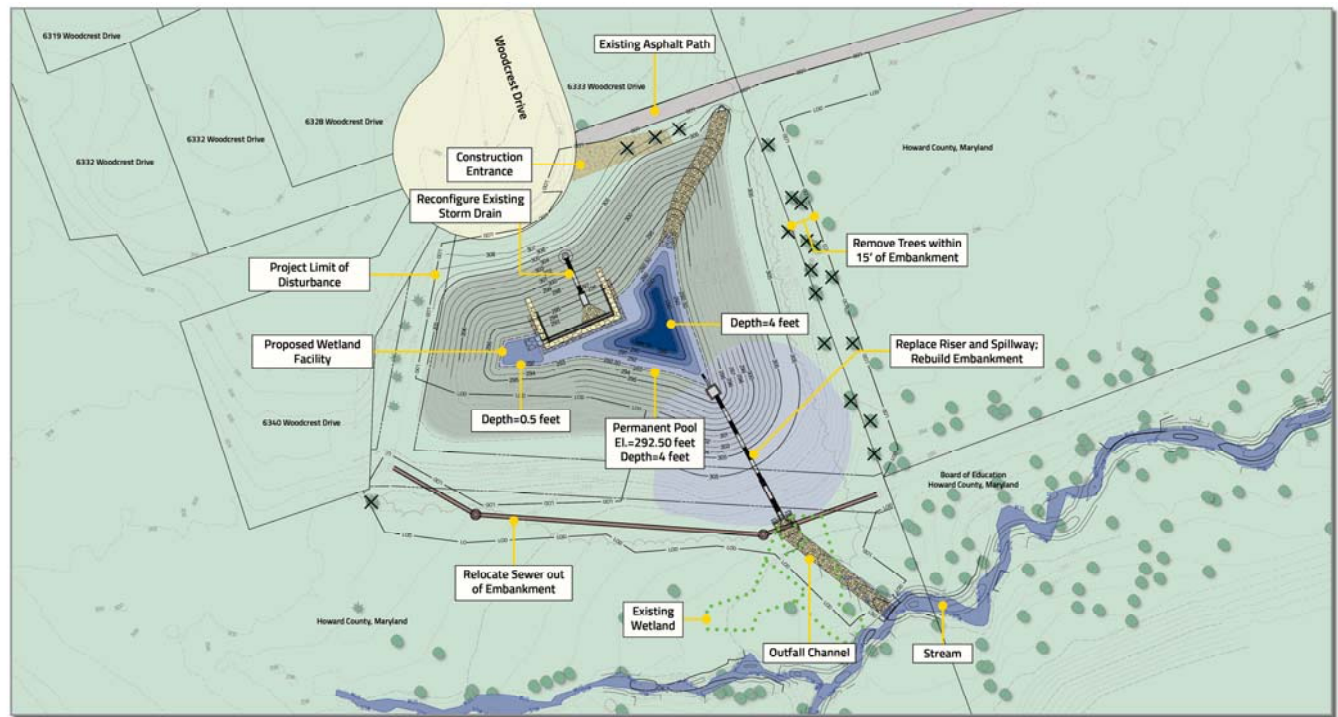
# Current Conditions



# Woodcrest Drive Pond Proposed Plan



## WOODCREST DRIVE PRINCIPAL SPILLWAY REPLACEMENT AND WATER QUALITY RETROFIT PROJECT

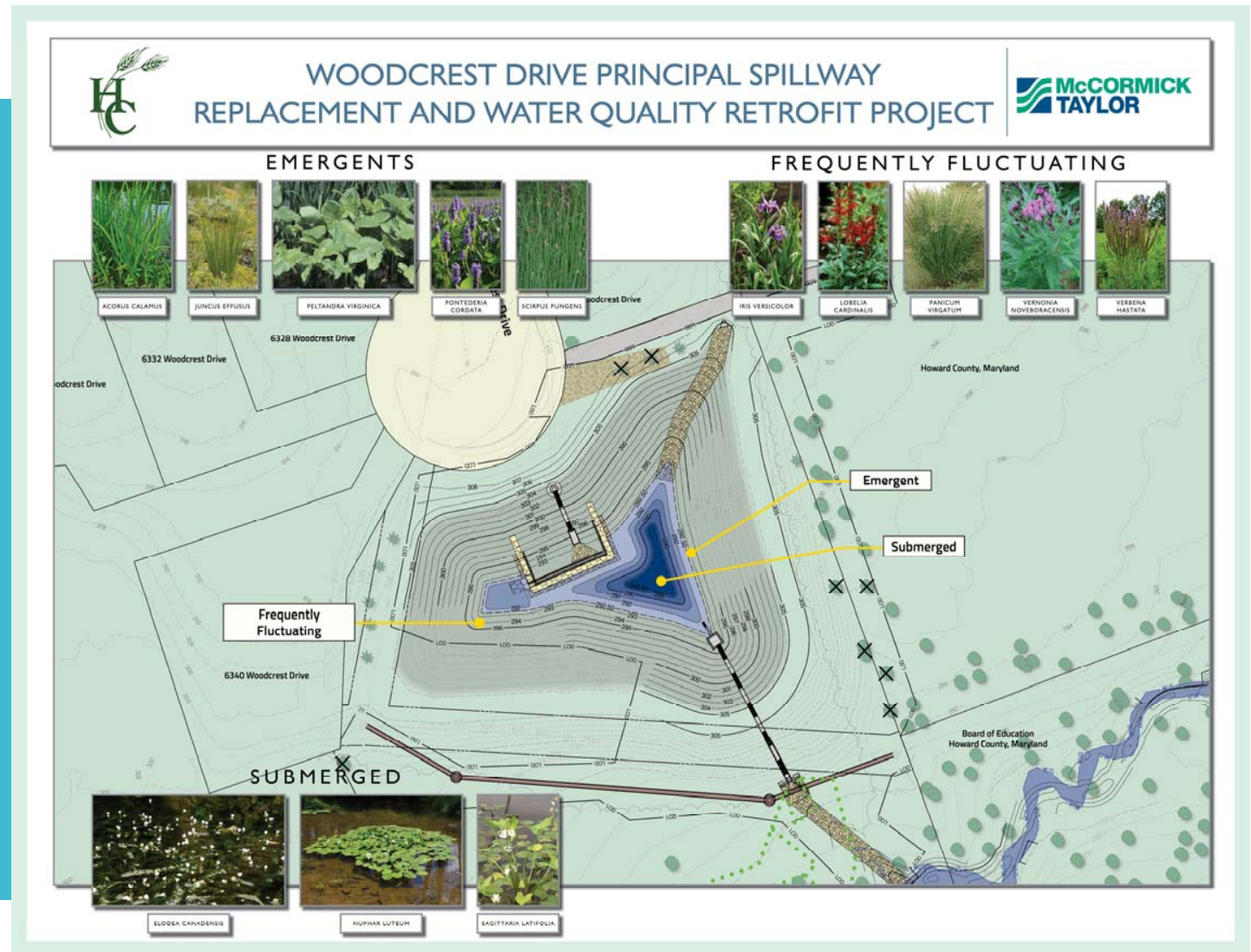




# Proposed Conditions

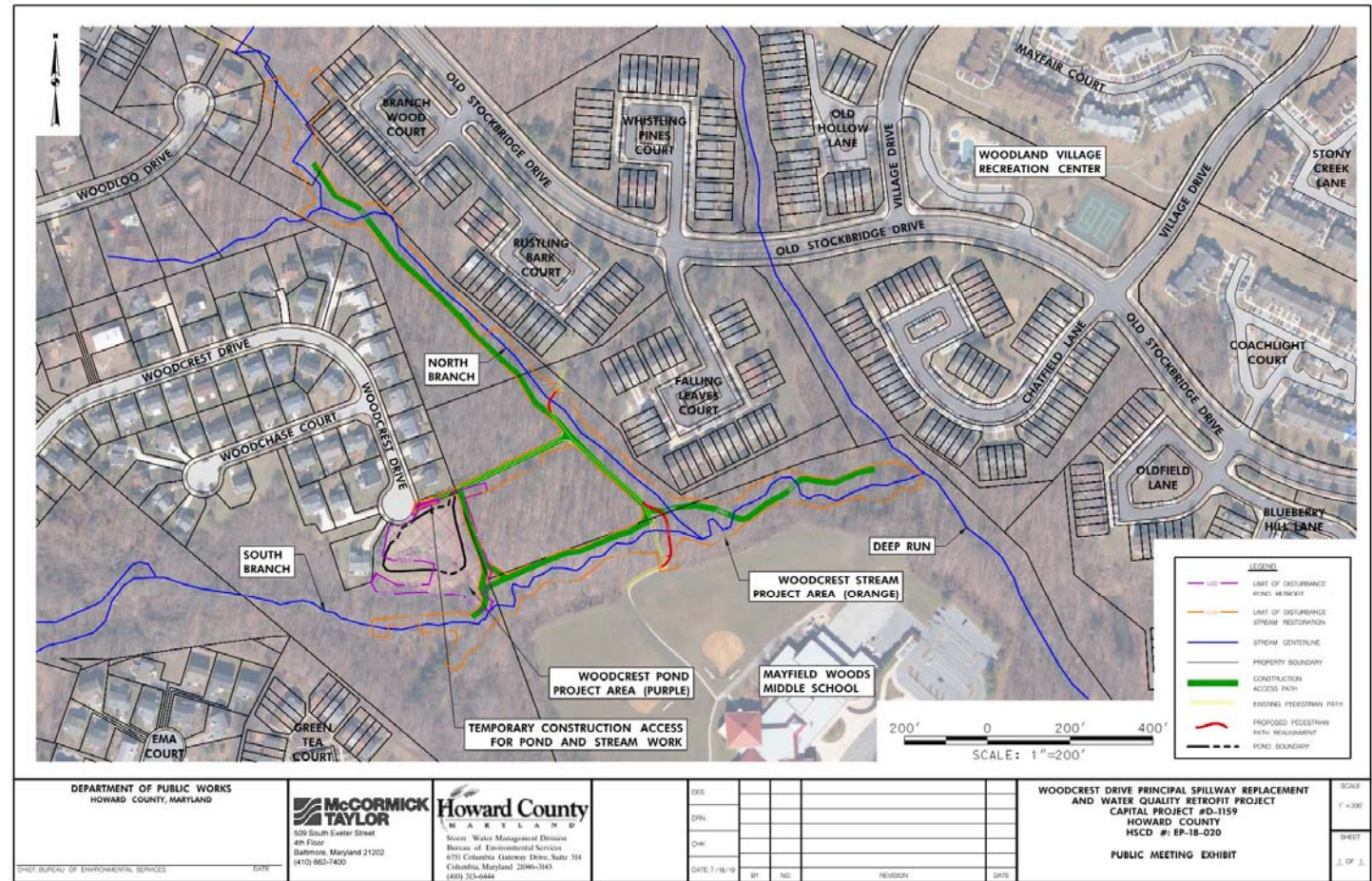


# Proposed Conditions





# Woodcrest Stream Stabilization

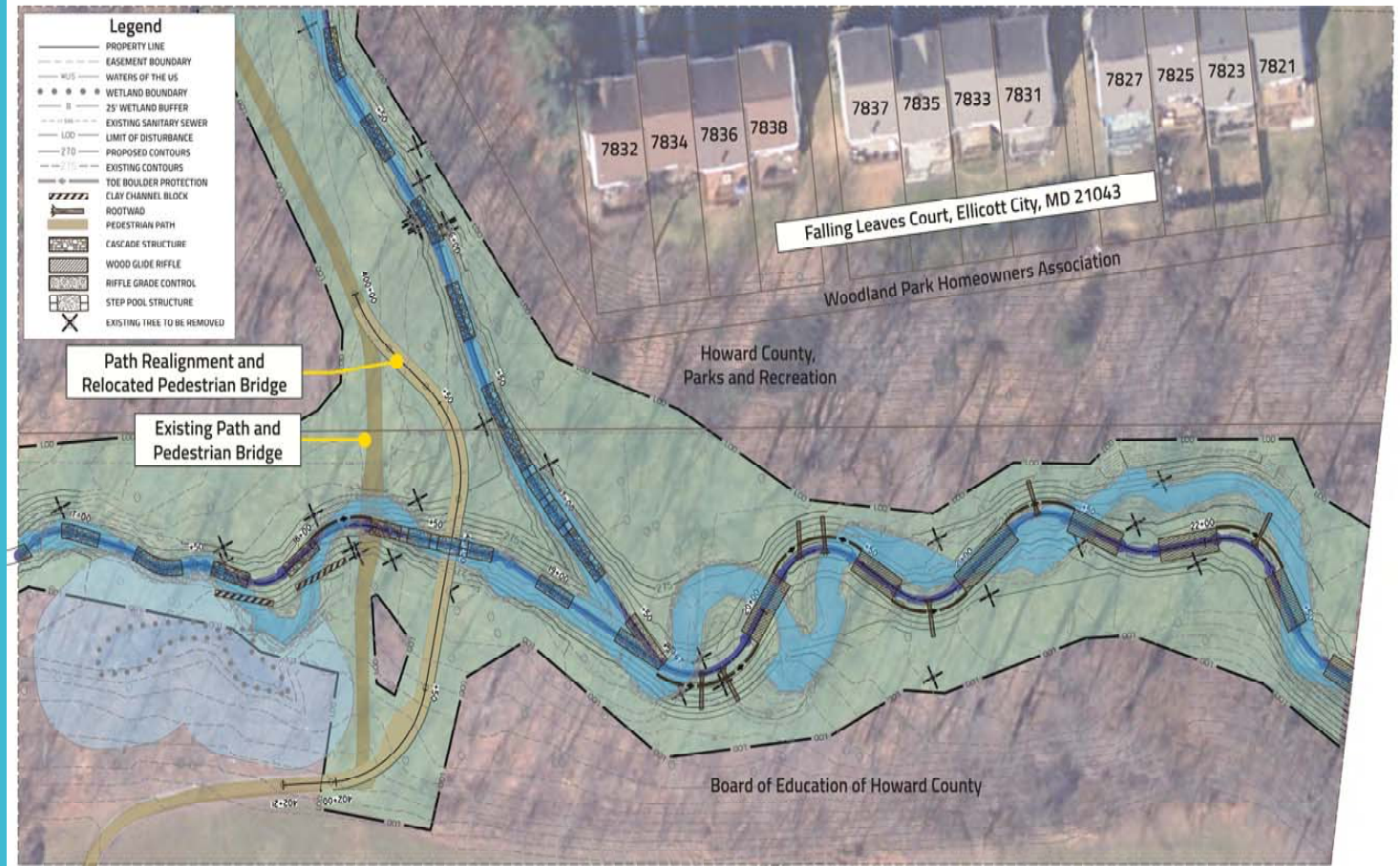




# Current Conditions

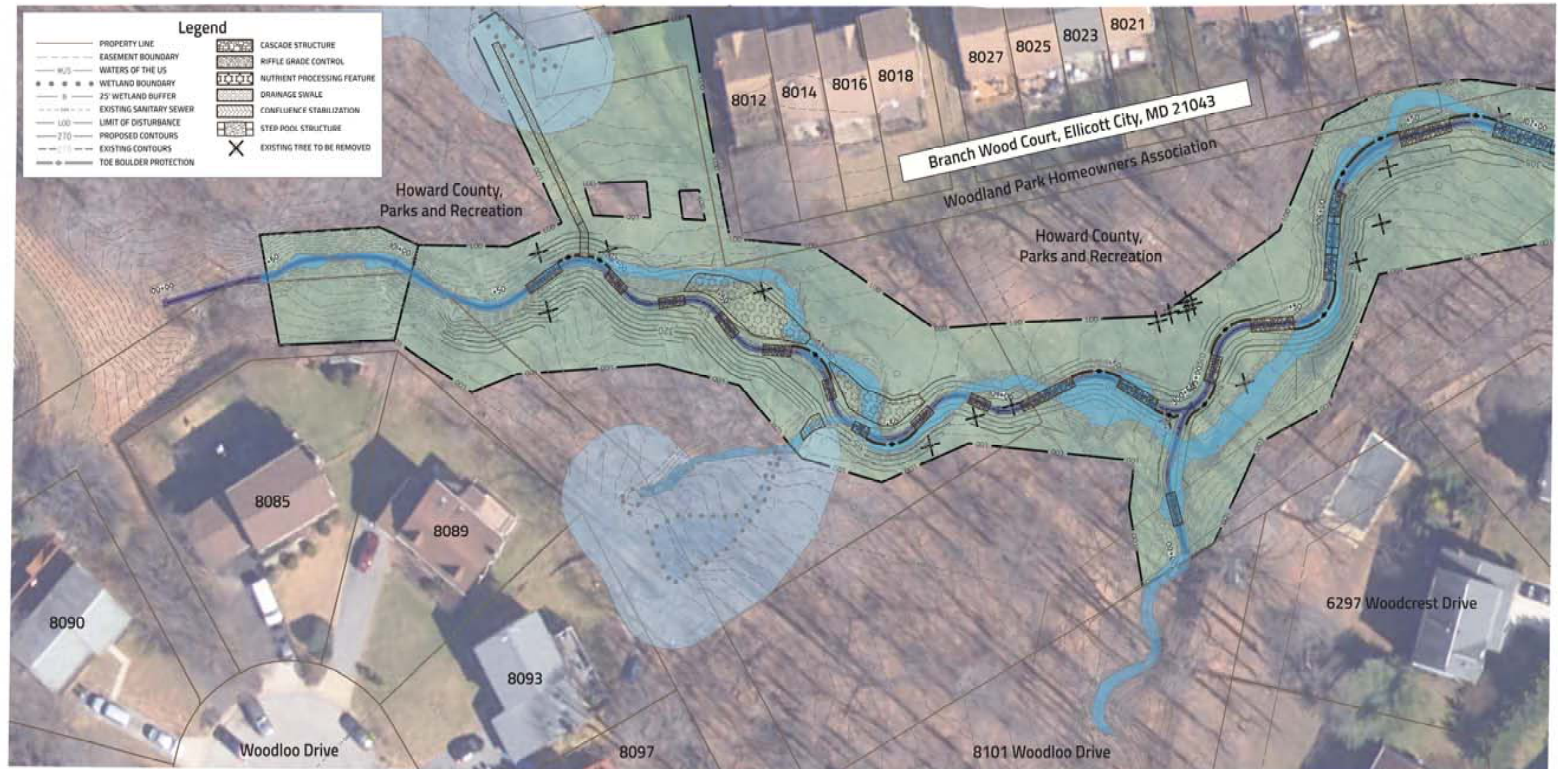


# Proposed Design





# Proposed Design



# Proposed Conditions

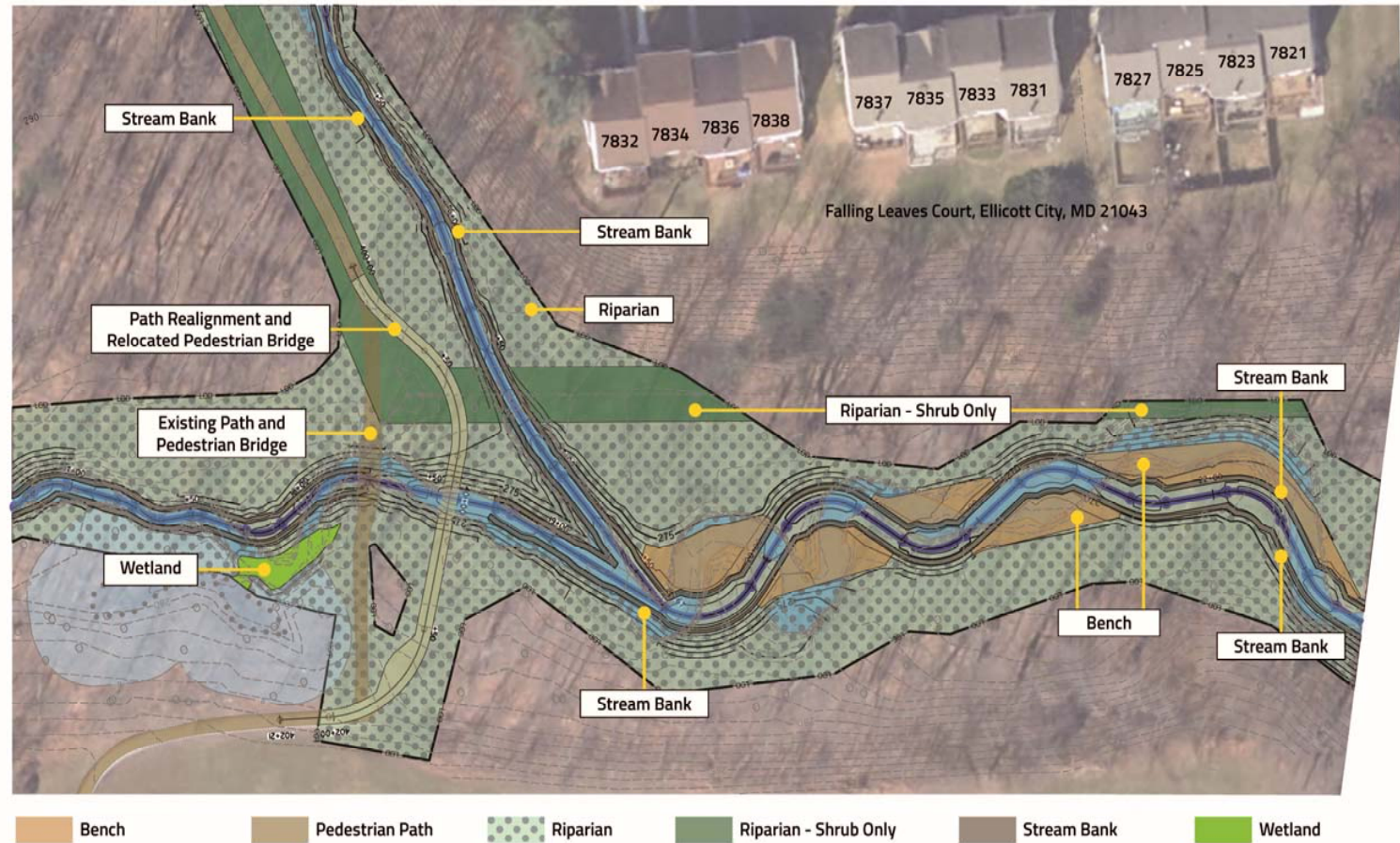








# Proposed Landscaping Design



# Proposed Design

Planting Schedule							
Zone	Quantity	Botanical Name	Common Name	Wetland Status	Size	Root	Comment
Streambank	949	<i>Cornus amomum</i>	Silky Dogwood	FACW	3' Min. Length	Live Stake	Plant 2' O. C.
Streambank	949	<i>Sambucus nigra</i>	American Black Elderberry	FAC	3' Min. Length	Live Stake	Plant 2' O. C.
Streambank	949	<i>Salix nigra</i>	Black Willow	OBL	3' Min. Length	Live Stake	Plant 2' O. C.
Riparian Tree & Shrub	119	<i>Quercus rubra</i>	Northern Red Oak	FACU	5'-6' HT	5 GAL. CONT.	Plant 12' O.C.
Riparian Tree & Shrub	119	<i>Quercus alba</i>	White Oak	FACU	5'-6' HT	5 GAL. CONT.	Plant 12' O.C.
Riparian Tree & Shrub	119	<i>Platanus occidentalis</i>	American Sycamore	FACW	5'-6' HT	5 GAL. CONT.	Plant 12' O.C.
Riparian Tree & Shrub	119	<i>Carya glabra</i>	Pignut Hickory	FACU	5'-6' HT	5 GAL. CONT.	Plant 12' O.C.
Riparian Tree & Shrub	119	<i>Liriodendron tulipifera</i>	Tulip Poplar	FACU	5'-6' HT	5 GAL. CONT.	Plant 12' O.C.
Riparian Tree & Shrub	114	<i>Alnus incana</i>	Speckled Alder	FACU	2'-3' HT	3 GAL. CONT.	Plant 12' O.C.
Riparian Tree & Shrub	114	<i>Amelanchier arborea</i>	Serviceberry	FAC	2'-3' HT	3 GAL. CONT.	Plant 8' O.C.
Riparian Tree & Shrub	114	<i>Sambucus nigra</i>	American Black Elderberry	FAC	2'-3' HT	3 GAL. CONT.	Plant 8' O.C.
Riparian Tree & Shrub	114	<i>Photinia melanocarpa</i>	Black Chokeberry	FAC	2'-3' HT	3 GAL. CONT.	Plant 8' O.C.
Riparian Tree & Shrub	114	<i>Viburnum dentatum</i>	Southern Arrowwood	FAC	2'-3' HT	3 GAL. CONT.	Plant 8' O.C.
Riparian Shrub Only	100	<i>Amelanchier arborea</i>	Serviceberry	FAC	2'-3' HT	3 GAL. CONT.	Plant 8' O.C.
Riparian Shrub Only	100	<i>Cornus amomum</i>	Silky Dogwood	FACW	2'-3' HT	3 GAL. CONT.	Plant 8' O.C.
Riparian Shrub Only	100	<i>Photinia melanocarpa</i>	Black Chokeberry	FAC	2'-3' HT	3 GAL. CONT.	Plant 8' O.C.
Riparian Shrub Only	100	<i>Viburnum dentatum</i>	Southern Arrowwood	FAC	2'-3' HT	3 GAL. CONT.	Plant 8' O.C.
Bench/Wetland	8	<i>Betula nigra</i>	River Birch	FACW	5'-6' HT	5 GAL. CONT.	Plant 12' O.C.
Bench/Wetland	8	<i>Quercus palustris</i>	Pin Oak	FACW	5'-6' HT	5 GAL. CONT.	Plant 12' O.C.
Bench/Wetland	8	<i>Platanus occidentalis</i>	American Sycamore	FACW	5'-6' HT	5 GAL. CONT.	Plant 12' O.C.
Bench/Wetland	8	<i>Asimina triloba</i>	Common Pawpaw	FAC	5'-6' HT	5 GAL. CONT.	Plant 12' O.C.
Bench/Wetland	8	<i>Carpinus caroliniana</i>	American Hornbeam	FAC	5'-6' HT	5 GAL. CONT.	Plant 12' O.C.
Bench/Wetland	13	<i>Viburnum dentatum</i>	Southern Arrowwood	FAC	2'-3' HT	3 GAL. CONT.	Plant 8' O.C.
Bench/Wetland	13	<i>Alnus serrulata</i>	Hazel Alder	OBL	2'-3' HT	3 GAL. CONT.	Plant 8' O.C.
Bench/Wetland	13	<i>Rhododendron viscosum</i>	Swamp Azalea	FACW	2'-3' HT	3 GAL. CONT.	Plant 8' O.C.
Streambank Fascines	145 LF	<i>Salix nigra</i>	Black Willow	OBL	6' Min. Length X 6" Min. Diameter	Live Fascine	See Detail Sheet 38
Streambank Fascines	25	<i>Salix nigra</i>	Black Willow	OBL	3' Min. Length X 2-4" Diameter	Live Post	Plant 3' O.C.
Streambank Fascines	25	<i>Salix interior</i>	Sandbar Willow	FACW	3' Min. Length X 2-4" Diameter	Live Post	Plant 3' O.C.

# What to Expect During Construction

## Woodcrest Drive Pond

- **Construction is anticipated to start late Fall/early Winter 2020**
- **Duration**
  - Approximately 5 months
- **Construction Hours**
  - Monday to Friday, 7AM to 5PM
- **Safety**
  - Construction site will be fenced with orange construction safety fence
- **Traffic**
  - Minor impacts to traffic from entering and exiting construction vehicles
- **Noise**
  - Contractor is required to comply with Howard County Noise Ordinance
- **Sediment**
  - Contractor is required to comply with Howard County Sediment Control Permit and not track dirt onto roads

## Woodcrest Stream

- **Construction is anticipated to start late Summer 2020**
- **Duration**
  - Approximately 9 months
- **Construction Hours**
  - Monday to Friday, 7AM to 5PM
- **Walking Path**
  - Will be closed during duration of the project
  - School bus transportation will be provided
- **Safety**
  - Construction site will be fenced with orange construction safety fence
- **Traffic**
  - Minor impacts to traffic from entering and exiting construction vehicles
- **Noise**
  - Contractor is required to comply with Howard County Noise Ordinance
- **Sediment**
  - Contractor is required to comply with Howard County Sediment Control Permit and not track dirt onto roads



# Questions?

- Michele Monde, Howard County DPW, Bureau of Environmental Services, Stormwater Management Division (410-313-0844, [mmonde@howardcountymd.gov](mailto:mmonde@howardcountymd.gov))