



MARYLAND CHILD CARE  
RESOURCE NETWORK

## CHILD CARE DEMOGRAPHICS • 2023

### Howard County Report

*The Maryland Child Care Resource Network and Maryland Family Network, Inc. are co-publishers of this Howard County Report for the Network's Maryland Child Care Demographics Report series. The series includes reports for the State, for each of Maryland's 23 counties and the City of Baltimore.*



MARYLAND  
FAMILY  
NETWORK

### Frequently Requested Child Care Information

Howard County is situated in the heart of the dynamic corridor between Washington D.C. and Baltimore, the fourth largest consolidated market in the U.S. Due to its optimal location, Howard County is one of the nation's premier communities with over 320,000 residents, one of the most educated workforces, and a national recognition as one of the best places to live, work, and raise a family. The vibrant, thriving economy is in close proximity to 50 federal agencies, universities, Fortune 500 companies, technology, defense, and healthcare companies. The county is the center of the growing cyber security industry due to its proximity to Fort George Meade, U.S. Cyber Command, and National Security Agency. It is also home to major research institutions such as Johns Hopkins Applied Physics Lab and companies like W.R. Grace, Merkle, Tenable Network Security, Medstar, and Maxim Healthcare Services.

Howard County's strategic location, strong employment base, superb quality of life, and premium suburban setting position it as an excellent place to do business. The county's private sector industries generate \$21.9 billion in economic output. Top employers include Maryland Health Enterprises Inc, Lb& B Assoc Inc, Giant Food, W R Grace & Co, and Oracle MICROS. The county's main industries include scientific and technical services, construction, educational services, manufacturing, real estate, and healthcare.

<https://commerce.maryland.gov/Documents/ResearchDocument/HowardBef.pdf>  
<https://hceda.org/why-howard-county/living/>  
<https://www.dllr.state.md.us/lmi/emplists/howard.shtml>

### Child Population 2021

Age Group	Number in age group
0-2 years	11,052
3-4 years	7,935
5 years	4,503
6-8 years	12,884
9-11 years	14,013
Total Children in Households Aged 0-11	50,387

Source: US Bureau of the Census, American Community Survey 2021

### Child Care Costs as Compared to Other Major Household Expenses

The estimated current median family income in Howard is \$148,026<sup>6</sup>. A family of four that included a couple and two children ages 0-23 months and 2-4 years can be expected to have the following yearly household expenses:

Expense	Cost	% of Income
Child Care		\$ 30,306 20.50%
Infant <sup>1</sup>	\$14,576	
Preschooler <sup>2</sup>	\$15,730	
Food <sup>3</sup>	\$ 12,612	8.50%
Housing <sup>4</sup>	\$ 31,512	21.30%
Taxes <sup>5</sup>	\$ 22,839	15.40%
Total	\$ 97,269	65.70%

<sup>1</sup> Average cost of full-time care in a family child care home (LOCATE, 2022).

<sup>2</sup> Average cost of full-time care in a child care center (LOCATE, 2022). <sup>3</sup> National average cost of food at home based on a moderate cost plan (Cost of Food at Home Estimated for Food Plans at Four Cost Level, July 2022), U.S. Average, United States Department of Agriculture). <sup>4</sup> Based on U.S. Bureau of the Census 2020 median selected owner costs with a mortgage; included mortgage, taxes, insurance and utilities. <sup>5</sup> State and local taxes per Comptroller of Maryland (2022), Medicare and FICA taxes per moneychimp.com (2022). Taxes do not reflect Earned Income Credit. <sup>6</sup> Current income as shown in the Geolytics Report dated July 2022. This data cannot be compared to previous data.

### Average Weekly Cost of Full-time Child Care

Howard County	Family Child Care Programs	Child Care Centers
0-23 months	\$ 280.31	\$ 417.73
2-4 years	\$ 247.55	\$ 302.50
5 years <sup>1</sup>	\$ 231.20	\$ 291.46
School Age Full <sup>2</sup>	\$ 214.69	\$ 273.83
School Age B/A <sup>3</sup>	\$ 133.48	\$ 157.90

Source: MFN/LOCATE: Child Care, 6/22.

<sup>1</sup> Average cost of full time care for a 5 year old. Defined as child being in full time child care or being in kindergarten and out-of-school child care, i.e., holidays, school closures and summers. <sup>2</sup> Average cost of full time care for a 6+ school age child (out-of-school child care, i.e., holidays, school closures and summers). <sup>3</sup> Average cost of before and after school child care.

### Population Information

#### Child Population<sup>1</sup>

	2011		2021	
	Howard	Maryland	Howard	Maryland
0-2 years	10,042	215,677	11,052	210,211
3-4 years	7,358	149,276	7,935	153,201
5 years	4,071	73,189	4,503	73,309
6-8 years	12,123	216,607	12,884	226,304
9-11 years	13,205	224,348	14,013	235,320
Total	46,799	879,097	50,387	898,345

Source: US Bureau of the Census, American Community Survey 2011, 2021

#### Female Population (selected ages)

Age Group	2011	2021
Aged 20-24	6,908	8,943
Aged 25-29	8,739	9,257
Aged 30-34	9,021	10,636
Total Aged 20-34	24,668	28,836

Source: US Bureau of the Census, American Community Survey 2011, 2021

#### Work Force Information

##### Total Population Ages 16+ in Work Force

	Howard	Maryland
<b>2011</b>		
Females	83,747	1,706,926
Males	92,002	1,772,418
<b>2021</b>		
Females	86,870	1,624,157
Males	94,361	1,706,122
<b>Change</b>		
Females	3.7%	-4.8%
Males	2.6%	-3.7%

Source: US Bureau of the Census, American Community Survey 2011, 2021

\* Does not include the population Not in the Labor Force

#### Females Aged 16+ with Children Under 18

Age Group	2011	2021	Change
Total Children Under 6 years old	21,281	22,671	6.5%
Children Under 6 with all custodial parents working	14,192	17,027	20.0%
Total Children 6-17 years old	51,258	55,188	7.7%
Children 6-17 with all custodial parents working	39,884	43,045	7.9%

Source: US Bureau of the Census, American Community Survey 2011, 2021

#### Total Population

	Howard	Maryland
2021	329,248	6,148,545
2011	283,655	5,736,545
2000	247,842	5,296,486
1990	187,328	4,780,753
1980	118,572	4,216,975

Source: US Bureau of the Census, 1980, 1990, 2000; American community Survey 2011, 2021

#### Male Population (selected ages)

Age Group	2011	2021
Aged 20-24	7,691	9,377
Aged 25-29	8,566	9,524
Aged 30-34	8,338	9,840
Total Aged 20-34	24,595	28,741

Source: US Bureau of the Census, American Community Survey 2011, 2021

#### Households

	2011	2021
Total household population	280,961	326,753
Total number of households	103,547	118,037
Average household size	2.71	2.77

Source: US Bureau of the Census, American Community Survey 2011, 2021

### Census Information

#### Families and Poverty

	2011	% in Poverty	2021	% in Poverty	% Change
All Families	76,263		86,647		13.6%
Families Below Poverty Level	2,257	3.0%	3,462	4.0%	53.4%
All Families with Children Under 5	14,074		13,503		-4.1%
All Families w Children Under 5 Below Poverty Level	741	5.3%	798	5.9%	7.7%
All Families w Children Under 18	41,279		43,149		4.5%
All Families w Children Under 18 Below Poverty Level	1,794	4.3%	2,252	5.2%	25.5%

Source: US Bureau of the Census, American Community Survey 2011, 2021

#### Children and Poverty

	2011	% in Poverty	2021	% in Poverty	% Change
Total Related Children Under 18	73,462		79,124		7.7%
Total Children Under 18 Below Poverty Level	3,688	5.0%	5,292	6.7%	43.5%
Total Children Under 5 Below Poverty Level	896	5.2%	1,121	6.1%	25.1%
Children 5-17 Below Poverty Level	2,792	5.0%	4,171	6.9%	49.4%

Source: US Bureau of the Census, American Community Survey 2011, 2021

#### Educational Attainment for Adults over 25 Years

	Howard	% of Adults	Maryland	% of Adults
Total Adults Aged 25 or More	222,846		4,240,795	
High School Graduate or Higher	212,539	95.4%	3,849,442	90.8%
Bachelors Degree or Higher	141,664	63.6%	1,762,482	41.6%

Source: US Bureau of the Census, American Community Survey 2011, 2021

#### Families

Howard	2011	2021	% Change
Total Families	76,263	86,647	13.6%
Total # of All Families with Related Children Under Age 6*	15,348	15,293	-0.4%
Total # of All Families with Related Children Under Age 18	39,606	40,973	3.5%
Maryland	2011	2021	% Change
Total Families	1,428,101	1,516,689	6.2%
Total # of All Families with Related Children Under Age 6*	269,284	260,117	-3.4%
Total # of All Families with Related Children Under Age 18	656,740	638,539	-2.8%

Source: US Bureau of the Census, American Community Survey 2011, 2021

\*Includes Families with children under 6 AND Families with children under 6 and aged 6-17

### Income, Unemployment and Housing Information

#### Annual Wage Rate Information

Public School Teacher Salary (Howard County) <sup>1</sup>	\$65,727
Public School Teacher Salary Average (MD) <sup>1</sup>	\$64,259
Nonpublic School Teacher Average (Maryland)	\$60,500
Family Child Care Provider (Maryland)	\$41,753
Child Care Center Director (Maryland)	\$41,372
Center Senior Staff/Teacher (Maryland)	\$25,905
Center Aide (Maryland)	\$17,491

<sup>1</sup>Maximum teacher salary with Bachelor's and Standard Professional Certificate (SPC). Sources: MSDE, Sept 2022, Association of Independent Maryland Schools (AIMS), 2021-22 school year, and MFN's 2022 Statewide Survey of Family Child Care Providers and Child Care Centers.

#### Family Income

##### Median Family Income, 2021

Howard	\$154,703
Maryland	\$111,378

Source: US Bureau of the Census, American Community Survey 2011, 2021

##### Median Household Income<sup>1</sup>:

Howard	\$129,549
Maryland	\$91,431

#### Income Distribution Percent Households

	Howard	Maryland
Under \$25,000	7%	12.3%
\$25,000-\$49,999	9%	14.6%
\$50,000-\$74,999	10%	14.7%
\$75,000 +	74%	58.5%
Total Households	118,037	2,294,270

Source: US Bureau of the Census, American Community Survey 2011, 2021

NOTE: Percentages may not total 100% because of rounding

#### Housing Information

	Howard	%	Maryland	%
Owner-Occupied housing	86,089	72.9%	1,543,719	67.3%
Renter-Occupied housing	31,948	27.1%	750,551	32.7%
Mean Value of Owner-Occupied Housing	\$483,200		\$338,500	
Median Selected Monthly Owner Costs with a Mortgage	\$2,711		\$2,111	
Median Gross Residential Monthly Rent	\$1,790		\$1,485	

Source: US Bureau of the Census, American Community Survey 2011, 2021

#### Unemployment Rate

	Howard	Maryland
2001	2.8%	4.0%
2002	2.8%	3.9%
2003	2.7%	4.1%
2004	2.5%	3.9%
2005	2.8%	3.9%
2006	2.7%	3.7%
2007	2.7%	3.6%
2008	3.3%	4.5%
2009	5.4%	7.1%
2010	5.4%	7.3%
2011	5.4%	7.2%
2012	4.9%	6.5%
2013	4.8%	6.2%
2014	4.4%	5.6%
2015	4.0%	5.0%
2016	3.6%	4.5%
2017	3.1%	4.3%
2018	3.6%	4.5%
2019	3.1%	3.9%
2020	6.7%	8.3%
2021	5.2%	6.7%
2022	2.9%	3.7%

Maryland Department of Labor, 6/2022.

### Supply of Regulated Early Childhood Programs and Education

#### Children's Programs by Type with Capacity/ Enrollment

	# of Programs	Capacity <sup>1</sup>
Family Child Care Providers	259	1,977
*OCC Licensed Group Programs	179	13,799
8-12 Hour Child Care Centers	119	9,981
Infant/Toddler	63	825
Part-Day	15	N/A
Before/after School (School & Center-Based)	106	8,579
Employer-Sponsored Centers	4	69
Nursery Schools	36	N/A
Private Kindergarten	18	N/A
**Head Start	3	264
***Public Pre-Kindergarten Sites	25	N/A
Total Infant/Toddler	308	1,417
Youth Camps	6	N/A

<sup>1</sup>Some providers may still be closed due to COVID 19 considerations.

\*Note: Numbers do not total because facilities may have more than one type of program. Unless otherwise indicated, all programs are privately funded.

\*\* Federally funded programs which include Head Start, Early Head Start and Home-based Head Start.

\*\*\*State funded.

Source: MFN/LOCATE Child Care, 6/22; Maryland State Department of Education; Department of Health and Mental Hygiene.

#### Education

##### Public and Private Schools (Elementary and Middle)

	Public	Private*
Elementary Schools	42	4
Middle Schools	20	0
Combined	0	20

##### Elementary School Enrollment

	Public	Private*
Pre-Kindergarten	1,321	1,220
Kindergarten	3,810	524
Grades 1 - 6	24,839	2,391
Total	29,970	4,135

Source: MSDE, 2021-22 school year. Enrollment figures are for September 30, 2021. Private schools include MSDE approved schools and those operated by a tax-exempt religious organization which hold a letter of exemption from approval in accordance with State law.

\*Self reported data from Maryland Nonpublic Schools as reported to MSDE.\*Self reported data from Maryland Nonpublic Schools as reported to MSDE.

#### Density of Family Providers and Center Programs by Community/Zip Code

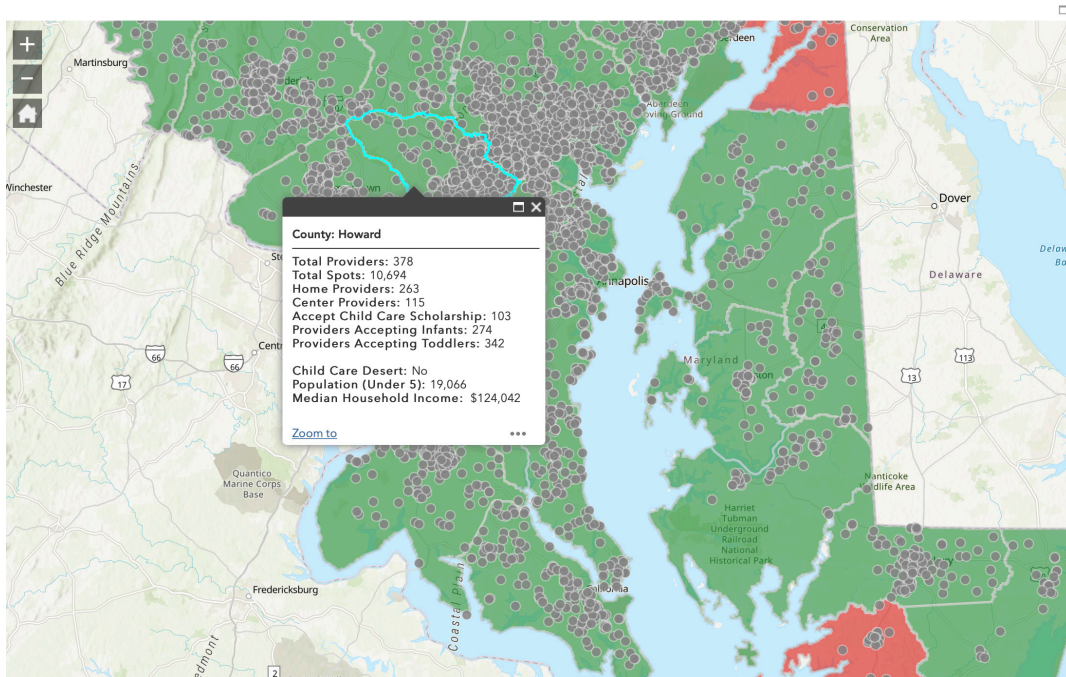
The following chart shows the number of registered family child care providers and licensed full-day child care centers in Howard as of June 30, 2022.

Community/ Zip Code	Family Providers	8-12 Hour %	Centers	%
Clarksville 21029	3	1.2%	7	6.0%
Columbia 21044	30	11.7%	14	12.0%
Columbia 21045	50	19.5%	22	18.8%
Columbia 21046	18	7.0%	7	6.0%
Cooksville 21723	1	0.4%	0	0.0%
Dayton 21036	0	0.0%	0	0.0%
Elkridge 21075	36	14.0%	11	9.4%
Ellicott City 21042	19	7.4%	14	12.0%
Ellicott City 21043	31	12.1%	14	12.0%
Ellicott City 21045	0	0.0%	1	0.9%
Fulton 20759	1	0.4%	6	5.1%
Glenelg 21737	2	0.8%	1	0.9%
Glenwood 21738	1	0.4%	1	0.9%
Hanover 21076	3	1.2%	1	0.9%
Highland 20777	0	0.0%	2	1.7%
Jessup 20794	6	2.3%	2	1.7%
Laurel 20723	50	19.5%	8	6.8%
Lisbon 21765	0	0.0%	0	0.0%
Marriottsville 21104	1	0.4%	3	2.6%
Savage 20763	0	0.0%	1	0.9%
Sykesville 21784	2	0.8%	0	0.0%
West Friendship 21794	2	0.8%	0	0.0%
Woodbine 21797	1	0.4%	1	0.9%
Woodstock 21163	0	0.0%	1	0.9%
Totals	259	100.0%	119	100.0%

Source: MFN/LOCATE: Child Care, 6/22. NOTE: Percentages may not total 100% because of rounding.

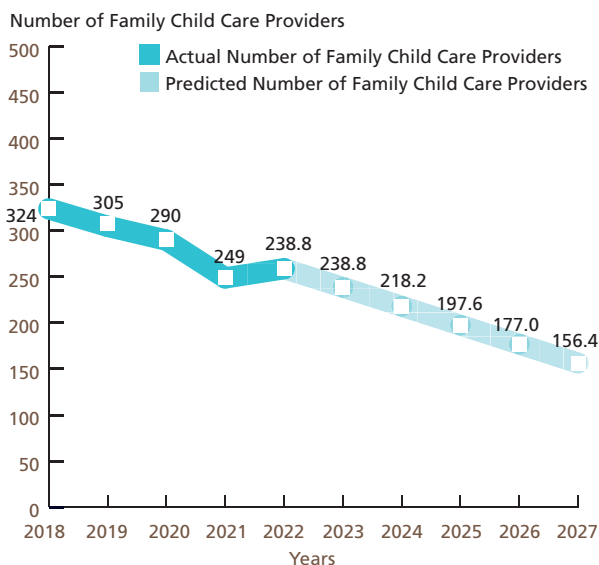
### Supply of Regulated Early Childhood Programs and Education

Maryland Family Network and Upfront partnered to create a real-time map of Maryland's child care landscape to identify deserts by county, legislative, and congressional districts. <https://locatesearch.marylandfamilynetwork.org/map>

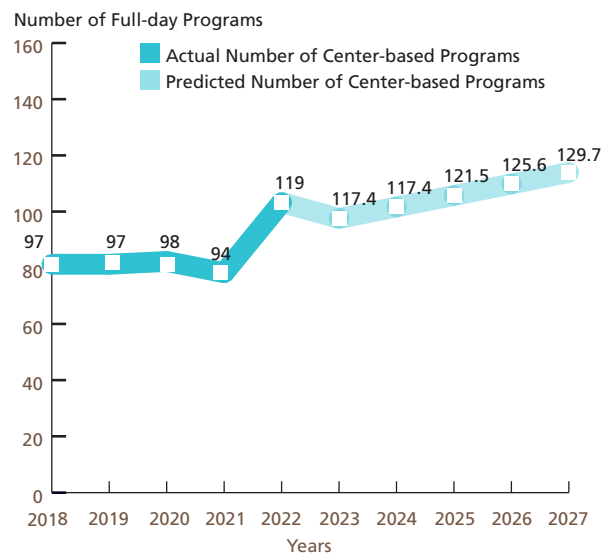


### Past and Anticipated Growth Patterns for Family/Center Providers

**Family Child Care Providers in Howard 2018-2027**



**Center-based Programs in Howard 2018-2027**  
Full-day (8 to 12 hours)

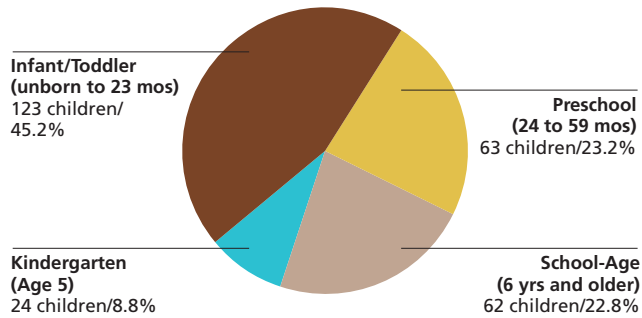


These predictions were generated with the use of the Multiple Regression Analysis and Forecasting template. The predictions generated by the Model do not reflect the effects of current changes to social programs affecting child care.  
 Source: MFN/LOCATE: Child Care, 6/22.

### Demand for Child Care

#### Children Served by Age

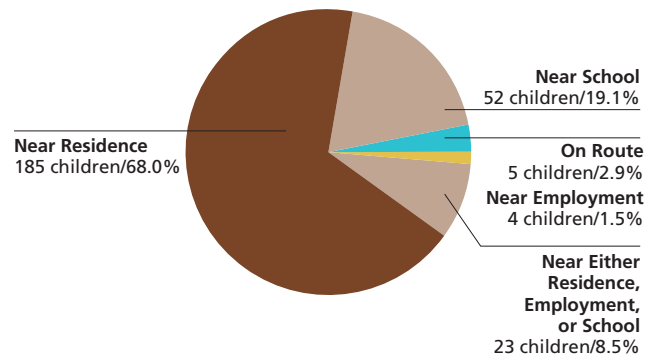
N=272



Source: LOCATE: Child Care at Maryland Family Network, Baltimore (7/1/21-6/30/22).  
NOTE: Percentages may not total 100% because of rounding.

#### Children Served by Locational Preferences for Care

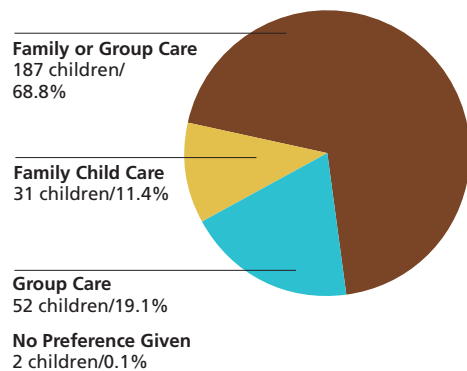
N=272



Source: LOCATE: Child Care at Maryland Family Network, Baltimore (7/1/21-6/30/22).  
NOTE: Percentages may not total 100% because of rounding.

#### Children Served by Type of Care Preferred

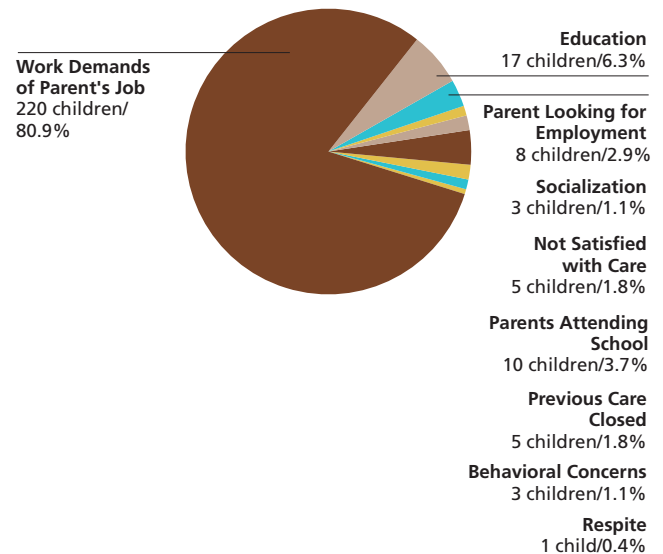
N=272



Source: LOCATE: Child Care at Maryland Family Network, Baltimore (7/1/21-6/30/22).  
NOTE: Percentages may not total 100% because of rounding.

#### Reason Child Care is Needed

N=272



Source: LOCATE: Child Care at Maryland Family Network, Baltimore (7/1/21-6/30/22).  
NOTE: Percentages may not total 100% because of rounding.

### Demand for Child Care

**Number of Children Served by LOCATE: Child Care**  
272 children (7/1/21-6/30/22)

#### Full-time or Part-time Care Needs of Children Served N=272

Full-time: 168 children (61.8%)

Part-time: 84 children (30.9%)

Other\*: 20 children (7.3%)

\* Includes requests for sick, backup and temporary care.

Source: LOCATE: Child Care at Maryland Family Network, Baltimore (7/1/21-6/30/22).

#### Child Care Scholarship Program (CCS)\*

**LOCATE Calls received from parents with children eligible for Child Care Scholarship**  
54 (22.4% of all calls)

**LOCATE Calls received from parents with children receiving Child Care Scholarship**  
31 (12.9% of all calls)

Source: LOCATE: Child Care at Maryland Family Network, Baltimore (7/1/21-6/30/22)

\* Formerly Child Care Subsidy Program.

#### Major Reasons Parents Could Not Find Child Care in Howard County

Reason	Count
Cost	3
No Vacancies for Head Start	2
No Part time available	1
No Vacancies for Preschool	1
Transportation	1

Source: LOCATE: Child Care at Maryland Family Network, Baltimore (7/1/21-6/30/22).

#### Major Factors Important to Parents Who Found Child Care in Howard County

Factor	Count
Caregiver	15
Educational program	15
Environment	11
Cost	8
Proximity to home, school, work	7
Hours of operation / part-time	5
Only program/provider with vacancy	1
Transportation / Escort	1

Source: LOCATE: Child Care at Maryland Family Network, Baltimore (7/1/21-6/30/22).

### Supply of Child Care

#### Child Care Scholarship Program (CCS)\*

**Family Child Care Providers willing to care for CCS children in Howard County**  
50 (19.3% of total family child care providers)

**Child Care Centers willing to care for CCS children in Howard County**  
58 (48.7% of total child care centers)

LOCATE: Child Care at Maryland Family Network Baltimore, June 2022.

\* Formerly Child Care Subsidy Program.

**Howard County FY22 Allocation (estimated)**  
\$7,105,262 = 689 full-time children enrolled

Source: Maryland State Department of Education, Office of Child Care.

#### Special Needs Child Care

**Family providers who serve/have served children with special needs**  
128 (49.4% of total family child care providers in Howard)

**Centers who serve/have served children with special needs**  
78 (65.5% of total child care centers in Howard)

Source: LOCATE: Child Care at Maryland Family Network, Baltimore (7/1/21-6/30/22).

### Definitions

**The American Community Survey (ACS):** An ongoing survey that provides vital information on a yearly basis about our nation and its people. Information from the survey generates data that help determine how more than \$675 billion in federal and state funds are distributed each year. (Census.gov)

**Before/After-School Care:** School-Age child care offers care to children enrolled in Kindergarten or above. Care is provided before and/or after school and during school holidays/vacations. Programs are licensed by the Office of Child Care. Programs may operate from a school building or other licensed facility.

**Census of Population and Housing:** There are two versions of the Census questionnaire: a short form which asks a limited number of population and housing questions of all households, and a long form questionnaire which asks additional social and economic questions of a sample of all households. The user should note that data obtained from a sample are subject to sampling variability, and that there are limitations to many of these data.

**Child Care:** The care or supervision of a child when the child's parent has given the child's care over to another for some portion of a 24-hour-day as a supplement to the parent's primary care of the child. (OCC)

**Child Care Center:** Child care provided in a facility that, for part or all of the day, provides care to children in the absence of the parent. Centers are licensed by the Office of Child Care.

**Child Care Scholarship Program (CCS)\*:** Provides financial assistance to eligible families in securing care for their children in registered family child care homes or licensed child care centers while parents/guardians are attending school, working, or in job training.

**Children with Special Needs:** Children who, because of a disability or other special educational, developmental, physical, emotional, behavioral, or medical condition, require additional care, or whose activities are restricted by a certain condition. (OCC)

**Current Median Family Income:** Current, median family income is from the American Community Survey 2017 to 2021.

**Current Population Estimates:** Current Population Estimates are based on the American Community Survey 2017 to 2021.

**Educational Attainment:** The highest level of school completed or the highest degree received. Educational attainment figures were used for persons over 25 years of age. (U.S. Bureau of the Census)

**Employer-Sponsored Centers:** A child care center located on-site or off-site which is sponsored by a corporation, business, or other employer. Employees are given priority for enrollment slots.

**Family Child Care:** The care given to a child younger than 13 years old or to a developmentally disabled person younger than 21 years old, in place of parental care for less than 24 hours a day, in a residence other than the child's residence and for which the provider is paid. Regulations allow a family child care provider to care for as many as eight children at any time. (OCC)

**Family Income:** Family includes a householder and one or more persons living in the same household who are related to the householder by birth, marriage, or adoption. A household can contain only one family for purposes of census tabulations. (U.S. Bureau of the Census)

**Head Start:** Project Head Start provides comprehensive developmental services for children from low-income families. Head Start is comprised of four components including Education, Health, Parent Involvement, and Social Services. Head Start Centers serve children from age 3 to school entry age from income eligible families.

**Income of Households:** This includes the income of the householder and all other individuals 15 years old and over in the household, whether they are related to the householder or not. Because many households consist of only one person, average household income is usually less than average family income.

**Infant/Toddler:** In the State of Maryland, "infant" means a child under 18 months old. "Toddler" means a child 18 months old or older but younger than 2 years old. (OCC) MFN reports "infant" as a child birth through 23 months of age.

**Kindergarten:** An instructional program for children who are 5 years old by September 1st of each academic year. Programs may be operated by a private or public school. Kindergarten is the year of school which precedes entrance to first grade.

**Nursery Schools:** An instructional program approved or exempted by the Maryland State Department of Education for children who are two through four years old. The maximum length of the program is 6 hours per day, however most operate only a few hours per day and may meet only two or three times per week for a nine month period.

**Owner Costs with Mortgage (Selected Monthly):** The sum of payments for mortgages, deeds of trust, contracts to purchase, or similar debts on the property; real estate taxes; fire hazard, and flood insurance on the property; utilities; and fuels. It also includes, where appropriate, the monthly condominium fees or mobile home costs. A housing unit is owner-occupied if the owner or co-owner lives in the unit even if it is mortgaged or not fully paid for. (U.S. Bureau of the Census)

### Definitions

**Part Day:** A program regulated by OCC with an educational focus for children one or two years before entering kindergarten. These programs are usually 2-3 hrs/day, 2-3 days/week, nine months/year.

**Pre-Kindergarten:** These are publicly funded pre-kindergarten programs for eligible 4-year-old children administered by local boards of education or qualified vendors. The programs have the overall goal of providing learning experiences to help children develop and maintain school readiness skills necessary for successful school performance. Local school systems shall enroll all 4-year-old applicants from economically disadvantaged or homeless families.

**Poverty Level:** The poverty guideline for a family of four persons was \$27,750 in 2022. (U.S. Department of Health and Human Services, Jan 2021)

**Renter Occupied Gross Monthly Rent:** Monthly contract rent plus the estimated average monthly cost of utilities and fuels, if these are paid by the renter. All occupied housing units which are not owner-occupied, whether they are rented for cash rent or occupied without payment of cash rent, are classified as renter-occupied. (U.S. Bureau of the Census)

**Unemployment Rate:** Civilians 16 years old and over are classified unemployed if they (1) were neither “at work” nor “with a job but not at work” during the reference week, and (2) were looking for work during the last four weeks, and (3) were available to accept a job. Also included were civilians who did not work at all during the reference week and were waiting to be called back to a job from which they had been laid off. (U.S. Bureau of the Census)

The Maryland Child Care Resource Network is a public/private partnership designed to expand and improve child care delivery in Maryland. Maryland Family Network manages the Network and operates as its Statewide Coordinating Entity. Funding for this publication was made available by Maryland Family Network, the Maryland State Department of Education, and Maryland's business community.

For more information regarding the Child Care Demographic Reports, contact:

**Maryland Family Network**

1001 Eastern Avenue, 2nd Floor

Baltimore, Maryland 21202

tel 410.659.7701 fax 410.783.0814

[www.marylandfamilynetwork.org](http://www.marylandfamilynetwork.org)

For information regarding technical assistance and training for the child care community, contact:

**Howard County Child Care Resource Center**

3300 North Ridge Road, Suite 380

Ellicott City, MD 21043

tel 410.313.1940

*This publication was produced as a work for hire for the benefit of, and with funds from, the Maryland State Department of Education.*

©2023 Maryland State Department of Education

©2023 Maryland Family Network



**MARYLAND CHILD CARE  
RESOURCE NETWORK**

The Maryland Child Care Resource Network is a public/private partnership designed to expand and improve child care delivery in Maryland. Maryland Family Network manages the Network and operates as its Statewide Coordinating Entity.



This publication was produced as a work for hire for the benefit of, and with funds from, the Maryland State Department of Education.

Content revised February 2023



**MARYLAND  
FAMILY  
NETWORK**

1001 EASTERN AVENUE, 2ND FLOOR  
BALTIMORE, MARYLAND 21202-4325  
tel 410.659.7701 fax 410.783.0814

[marylandfamilynetwork.org](http://marylandfamilynetwork.org)